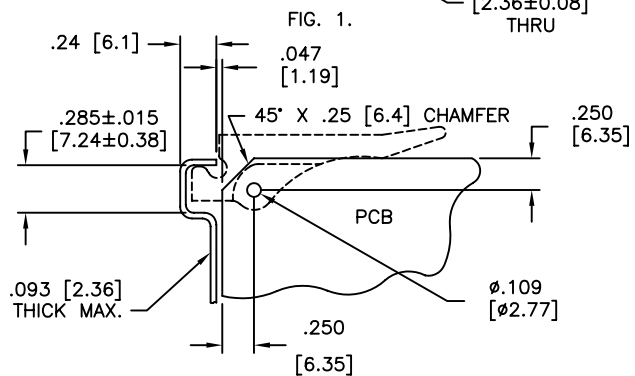
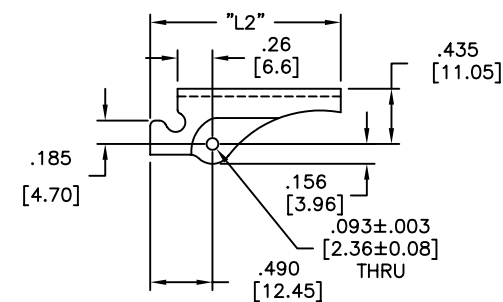
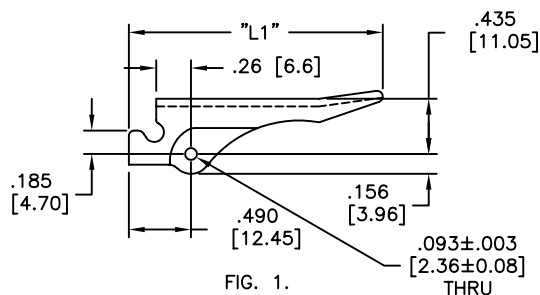
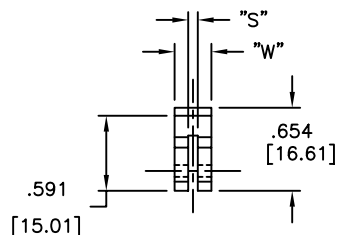


PART NO.	"S"	"W"	"L1"	"L2"	PCB THICKNESS	FIG. NO.
R1107-062	.075 (1.9)	.290 (7.4)	2.0 (50.8)	-	.062 (1.6)	1.
R11073-062	.075 (1.9)	.350 (8.9)	2.0 (50.8)	-	.062 (1.6)	
R11073-093	.100 (2.5)	.350 (8.9)	2.0 (50.8)	-	.093 (2.4)	
R110710-062	.075 (1.9)	.290 (7.4)	-	1.5 (38.1)	.062 (1.6)	2.
R1107310-062	.075 (1.9)	.350 (8.9)	-	1.5 (38.1)	.062 (1.6)	
R1107310-093	.100 (2.5)	.350 (8.9)	-	1.5 (38.1)	.093 (2.4)	



NOTES:

1. MATERIAL: NYLON 6/6 UL 94 V-0, GLASS FILLED (RMS-222).
2. COLOR: NATURAL.

H	SEE CO 200041 FOR CHANGES	SK 09.28.07
G	SEE ECN #1264 FOR CHANGES	SK 12.12.06
F	SEE ECN #1096 FOR CHANGES	SK 11.09.05
E	SEE ECN #933 FOR CHANGES	SK 02.02.05
D	ADDED ".26" DIM.; ADDED THICKNESS NOTE CHANGED "PANEL" TO "PCB" IN TABLE	SJ 01.18.02
C	CHANGED FILE NUMBER	SM 05.16.01
B	ADDED FIG. NO.; CHANGED FILE NO. AND DIM "S" POSITION	SM 04.10.01
A	METRIC EQUIVALENTS CORRECTED	PB 08.11.95
REV	DESCRIPTION	ENGR DATE

TITLE: INSERTER/EXTRACTOR				DWG IN IN(mm)	FINAL
TOLERANCES UNLESS NOTED .XX=±.010 .XXX=±.005 FRAC=1/64 ANG=1°	FILE # R1107	DWN: J.B.	APP:	PART # R1107 SERIES	PRINT TYPE CA
	MAT'L: SEE NOTES	DT: 04-15-97	DT:		
	RE: RICHCO, INC.	RICHCO INC. PO BOX 804238, CHICAGO, 60680 (773) 539-4060			

X-ON Electronics

Largest Supplier of Electrical and Electronic Components

Click to view similar products for [Circuit Board Hardware - PCB category](#):

Click to view products by [ESSENTRA manufacturer](#):

Other Similar products are found below :

[8919-0-00-15-00-00-03-0](#) [0135-0-15-01-30-27-04-0](#) [5970-1-15-01-32-14-04-0](#) [0149-0-15-15-30-27-04-0](#) [7305-0-15-15-47-14-10-0](#) [MLN](#)
[150/1 BLACK](#) [8579-0-15-80-11-27-10-0](#) [8579-1-15-15-11-27-10-0](#) [8830-0-15-01-22-14-10-0](#) [8836-0-00-21-00-00-03-0](#) [PRUEF 1 RED](#)
[PRUEF 2 RED](#) [9976-0-00-00-00-00-03-0](#) [PW1616](#) [1215-3-05-00-00-00-01-0](#) [1231](#) [1303-0-15-15-47-14-04-0](#) [1404-3](#) [1404-4](#) [1406-4](#) [1407-3](#)
[1407-4](#) [1408-3](#) [1424-4](#) [1427-3](#) [1419-4](#) [1426-4](#) [MPS 1 BLACK](#) [1548-103](#) [1938-0-00-00-00-00-03-0](#) [1942-0-00-00-00-00-03-0](#) [2101-3-](#)
[00-44-00-00-07-0](#) [2108-2-00-50-00-00-07-0](#) [2109-2-00-44-00-00-07-0](#) [2110-2-00-44-00-00-07-0](#) [2111-2-00-00-00-00-07-0](#) [2113-4-00-44-00-](#)
[00-07-0](#) [2301-3-00-44-00-00-07-0](#) [2308-1-00-50-00-00-07-0](#) [2313-2-00-00-00-00-07-0](#) [2315-2-01-44-00-00-07-0](#) [2317-2-00-50-00-00-07-0](#)
[2333-1-00-50-00-00-07-0](#) [9000-0-00-00-00-00-03-0](#) [2506-2-00-50-00-00-07-0](#) [2507-2-01-44-00-00-07-0](#) [2508-2-00-44-00-00-07-0](#) [2561-2-](#)
[00-44-00-00-07-0](#) [9220](#) [9234-0-15-15-30-14-10-0](#)