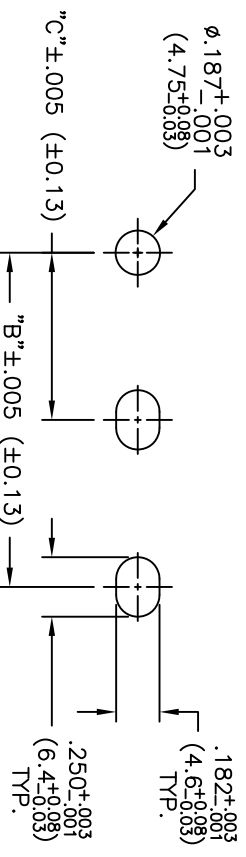
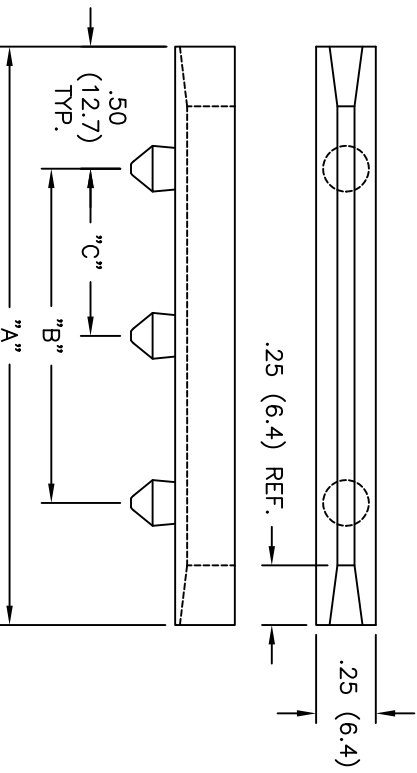
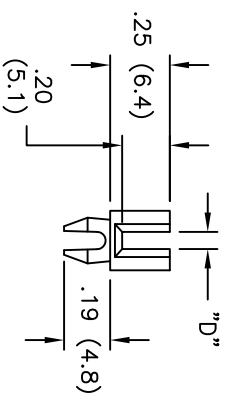


PART NO.	"A" REF.	"B"±.025 (±0.63)	"C"±.015 (±0.38)	NOMINAL BD. THKS.	"D"±.005 (±0.13)
RDC-250	2.50 (63.5)	1.50 (38.1)	-	-	-
RDC-450	4.50 (114.3)	3.50 (88.9)	-	1/16 (1.6)	.080 (2.0)
RDC-600	6.00 (152.4)	5.00 (127.0)	-	-	-
RDC-800	8.00 (203.2)	7.00 (177.8)	3.50 (88.9)	-	-
RDC-450-102	4.50 (114.3)	3.50 (88.9)	-	-	-
RDC-600-102	6.00 (152.4)	5.00 (127.0)	-	3/32 (2.4)	.102 (2.6)
RDC-800-102	8.00 (203.2)	7.00 (177.8)	3.50 (88.9)	-	-
RDC-450-130	4.50 (114.3)	3.50 (88.9)	-	1/8 (3.2)	.132 (3.4)
RDC-600-130	6.00 (152.4)	5.00 (127.0)	-	-	-
RDC-800-130	8.00 (203.2)	7.00 (177.8)	3.50 (88.9)	-	-



TYPICAL MOUNTING HOLES
 PANEL THICKNESS: .047-.090 (1.2-2.3)

- NOTES:
1. MATERIAL: GLASS-FILLED NYLON (RMS-66).
 2. COLOR: BLACK.
 3. SLOTTING OR ELONGATING OF 2ND AND 3RD MOUNTING HOLE IS RECOMMENDED TO ALLOW FOR LENGTH VARIATIONS IN MOLDING AND ASSEMBLY EASE.

I	UPDATED POST STYLE, ECN #1433	IDZ 12.11.17
H	SEE ECN #1073 FOR CHANGES	SK 10.11.05
G	SEE ECN #839 FOR CHANGES	SM 08.24.04
F	CHANGED FILE NUMBER AND UPDATED PRINT	SM 01.31.02
E	-130 SERIES ADDED	PB 050994
D	MOUNTING INSTRUCTIONS MODIFIED	PB 042994
C	DIM .05(1.3) ADDED MOUNTING INSTRUCTIONS MODIFIED, CHANGED TABLE	RS 021694
B	NEW P/N'S ADDED	RS 012494
A	METRIC DIMS., TOL. CORRECTED	RS 081892
REV	DESCRIPTION	ENGR DATE

TITLE: DEEP CHANNEL CARD GUIDE (RDC)		DWN: J.B.		APP:	
TOLERANCES UNLESS NOTED .XX=±.010 .XXX=±.005 FRAC=1/64 ANG=1°		FILE #	RDC	DT: 04-08-97	DT:
RE: -		ESSENTRA COMPONENTS		PART #	
SEE TABLE		FINAL		UNITS: INCH(mm)	
PRINT TYPE		CA		PRINT TYPE	

X-ON Electronics

Largest Supplier of Electrical and Electronic Components

Click to view similar products for [Racks & Rack Cabinet Accessories](#) category:

Click to view products by [ESSENTRA](#) manufacturer:

Other Similar products are found below :

[M00-PLN](#) [F2424](#) [8351-832-A-24](#) [9104](#) [9105](#) [PLFF2000](#) [H-9163-B](#) [1427C3](#) [HTS10](#) [PC-79](#) [SC10-3A](#) [SC4-28](#) [CG3-340S/12](#) [CP-001BK](#)
[M6123-4007-SS](#) [AX61400TB](#) [TS170](#) [LP40](#) [5261304-07](#) [CG3-160G](#) [7112C-PLN](#) [ALUM](#) [CM10](#) [8610-3124-S-26](#) [TS81](#) [7142](#) [GP134](#)
[M6125-4007-A-24](#) [M6127-4007-SS](#) [PBCOVER](#) [512](#) [AEG-4000G](#) [AEG-3000G](#) [HD99](#) [SR2-66A2](#) [FP10B4HP-1](#) [SR16-66A2](#) [FP52-2](#) [1406-](#)
[1006-01](#) [29478](#) [TS2535](#) [TS169-6](#) [CAC2](#) [HA19-3U](#) [BR-19-10-1](#) [TS180](#) [CG3-ESD](#) [SC11-1](#) [CFS-1.00/2.20](#) [HEC0800PB](#) [ZC633R](#)