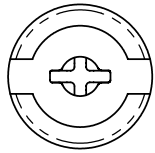
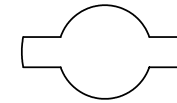
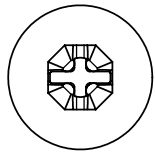
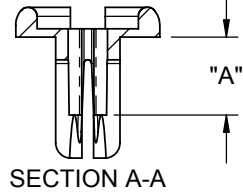
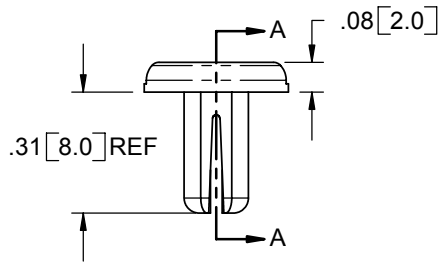


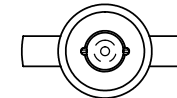
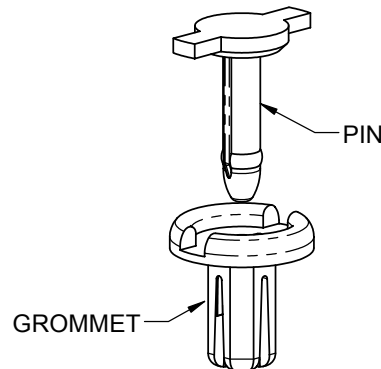
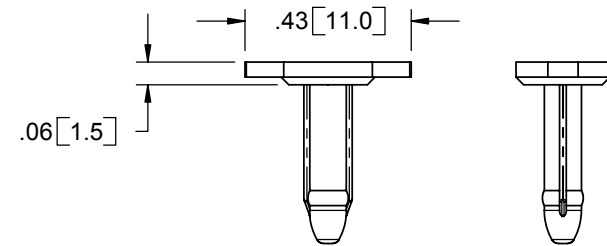
PART NO.	HOLE DIA. RANGE	PANEL THICKNESS	"A" REF
RRR-1	.188-.208 [4.76-5.28]	.059-.138 [1.5-3.5]	.14 [3.6]
RRR-2		.138-.217 [3.5-5.5]	.17 [4.4]



GROMMET



PIN



- NOTES:
 1. MATERIAL: NYLON 66/6 (RMS-103)
 2. COLOR: BLACK
 3. RIVET TO FIT IN INDICATED DIAMETER HOLE,
 OR .177 [4.5] MIN SQUARE HOLE
 4. PIN AND GROMMET ARE SUPPLIED UNASSEMBLED

TITLE: RICHCO REMOVABLE RIVET			DWG IN IN [MM]		FINAL		
CREATED USING SOLIDWORKS			FILE #: RRR-X	DWN: SK	APP: SK	PART #	
TOLERANCES UNLESS NOTED .XX=±.010 .XXX=±.005 FRAC.=±1/64 ANG.=±1°			SHEET: 1 OF 1	SHEET SIZE: A	DT: 06/15/05		CHKD: DJZ
B	SEE ECN # 1133 FOR CHANGES	S.J. 03/03/06	RE: RICHCO, INC.			SEE TABLE	PRINT TYPE CA
A	RELEASED FOR PRODUCTION	SK 06/15/05	RICHCO, INC. ENG@RICHCO-INC.COM (773) 539-4060				
REV.	DESCRIPTION	ENGR. DATE					

X-ON Electronics

Largest Supplier of Electrical and Electronic Components

Click to view similar products for [Screws & Fasteners](#) category:

Click to view products by [ESSENTRA](#) manufacturer:

Other Similar products are found below :

[5721-1440-1/4-SS](#) [593503FX](#) [0098.0094](#) [0098.9206](#) [0098.9219](#) [0098.9262](#) [596-2114-013](#) [59781-6](#) [0098.0026](#) [0098.9210](#) [0098.9212](#) [60227-01](#) [60227-04](#) [60227-08](#) [60687-01](#) [LOCK WASHER Black](#) [618-00001](#) [62153-03](#) [62153-11](#) [M316-KSSTMCZ100](#) [M3440-SS](#) [M3442-SS](#) [M3448-SS](#) [6292-1](#) [6-306105-9](#) [6-306131-4](#) [690432-1](#) [699161-000](#) [7230-3](#) [7244](#) [7248-1](#) [7248-2](#) [73542-02](#) [CAPTIVE SHORT THUMBSCREW](#) [745564-1](#) [F1209](#) [751-00001](#) [7680](#) [809704-1](#) [8700](#) [8860220](#) [9047](#) [9521](#) [992326-6](#) [992763-3](#) [1-18024-0](#) [1-18028-2](#) [A168P1](#) [A495P1](#) [1-24921-1](#) [125416-1](#) [1260](#)