

PART NO.	HOLE DIA. "G"	THICKNESS "F"	"A"	"B"	"C"	"D"	"E"	FIG NO.
SRT-3035		.039-.079 (1.0-2.0)			.14 (3.5)		.26	1
SRT-3045		.079-.118 (2.0-3.0)			.18 (4.5)		.26 (6.6)	
SRT-3055	.122-.126 (3.1-3.2)	.118-.157 (3.0-4.0)			.22 (5.5)	.118 (3.0)	.35 (9.0)	
SRT-3065		.157-.197 (4.0-5.0)			.26 (6.5)		.35 (9.0)	
SRT-3075		.197-.236 (5.0-6.0)	.394 (10.0)		.30 (7.5)		.35 (9.0)	
SRT-3080		.217-.256 (5.5-6.5)			.32 (8.0)			2
SRT-3535		.039-.079 (1.0-2.0)			.14 (3.5)		.26	
SRT-3545		.079-.118 (2.0-3.0)			.18 (4.5)		.26 (6.6)	
SRT-3555	.142-.146 (3.6-3.7)	.118-.146 (3.0-3.7)		.315 (8.0)	.22 (5.5)	.139 (3.5)	.35 (9.0)	
SRT-3570		.150-.205 (3.8-5.2)			.28 (7.0)		.35 (9.0)	
SRT-3580		.209-.256 (5.3-6.5)			.32 (8.0)		.35 (9.0)	
SRT-4050		.098-.138 (2.5-3.5)			.20 (5.0)		.30 (7.6)	
SRT-4060		.138-.177 (3.5-4.5)	.472 (12.0)		.24 (6.0)		.30 (7.6)	
SRT-4070	.161-.165 (4.1-4.2)	.177-.216 (4.5-5.5)			.28 (7.0)	.157 (4.0)	.44 (11.2)	
SRT-4080		.216-.256 (5.5-6.5)			.32 (8.0)		.44 (11.2)	
SRT-4090		.256-.295 (6.5-7.5)			.35 (9.0)			
SRT-4100		.295-.335 (7.5-8.5)			.39 (10.0)			

- NOTES:
1. MATERIAL: NYLON 6, (RMS-52).
  2. COLOR: BLACK.
  3. V-0 NYLON, RMS-103, AVAILABLE BY SPECIAL ORDER. TO ORDER REPLACE "SRT" WITH "SRTV0"

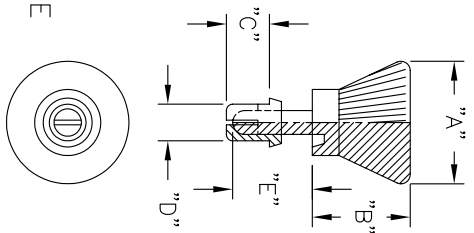


FIG. 1

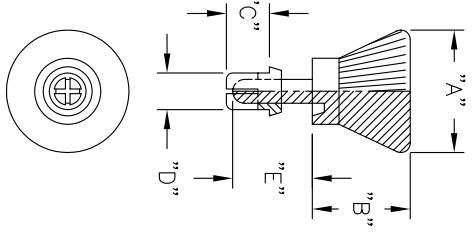
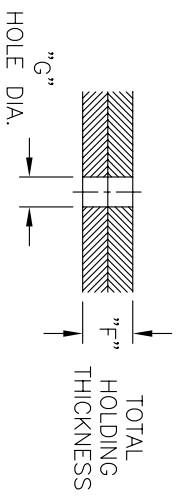


FIG. 2



G	SEE ECN #1149 FOR CHANGES	SU 04.03.06	TITLE: SNAP RIVET, T TYPE				DWG IN IN (MM)	
F	SEE ECN #992 FOR CHANGES	SK 05.03.05	FILE #	SRT	DWN: P.B.	APP:	PART #	PRINT TYPE
E	REM. RMS COL., ADDED RMS-52 & RMS 103	RG 10.24.01	MAT'L:	SEE NOTES	DT: 04-05-94	DT:	SRT-SERIES	CA
D	CHANGED FILE NUMBER	SM 05.18.01	RE:	RICHICO, INC.	Po BOX 804238	CHICAGO, 60680		
C	ADDED P/N: SRT-3075	SM 02.01.01			(773) 539-4060			
B	ADDED P/N: SRT-3535, SRT-3580, SRT-4090	S.M.11.08.00						
A	QUOTATION MARKS REMOVED	P.B.01.19.95						
REV	DESCRIPTION	ENGR DATE						

## X-ON Electronics

Largest Supplier of Electrical and Electronic Components

*Click to view similar products for [Screws & Fasteners](#) category:*

*Click to view products by [ESSENTRA](#) manufacturer:*

Other Similar products are found below :

[5721-1440-1/4-SS](#) [593503FX](#) [0098.0094](#) [0098.9206](#) [0098.9219](#) [0098.9262](#) [596-2114-013](#) [59781-6](#) [0098.0026](#) [0098.9210](#) [0098.9212](#) [60227-01](#) [60227-04](#) [60227-08](#) [60687-01](#) [LOCK WASHER Black](#) [618-00001](#) [62153-03](#) [62153-11](#) [M316-KSSTMCZ100](#) [M3440-SS](#) [M3442-SS](#) [M3448-SS](#) [6292-1](#) [6-306105-9](#) [6-306131-4](#) [690432-1](#) [699161-000](#) [7230-3](#) [7244](#) [7248-1](#) [7248-2](#) [73542-02](#) [CAPTIVE SHORT THUMBSCREW](#) [745564-1](#) [F1209](#) [751-00001](#) [7680](#) [809704-1](#) [8700](#) [8860220](#) [9047](#) [9521](#) [992326-6](#) [992763-3](#) [1-18024-0](#) [1-18028-2](#) [A168P1](#) [A495P1](#) [1-24921-1](#) [125416-1](#) [1260](#)