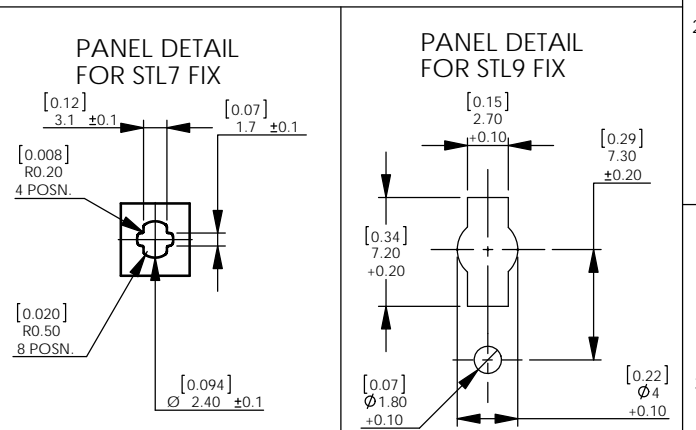
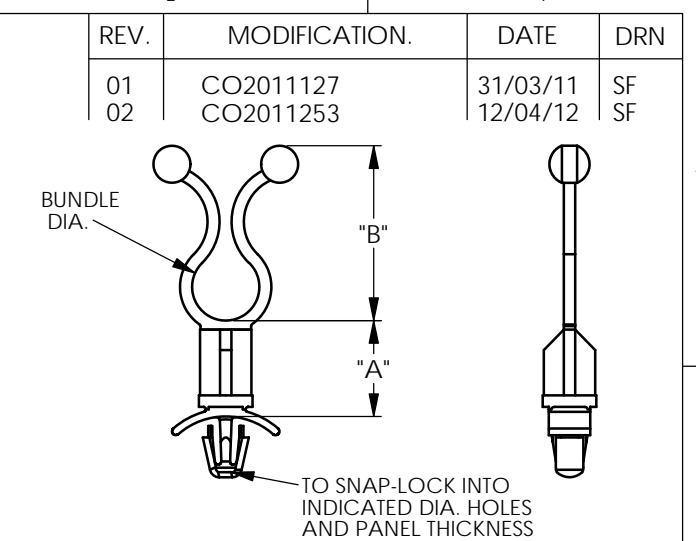


A	B	C	D	E	F
MATERIAL: NYLON 6/6 UL-94 V-2, RMS-01 COLOUR:NATURAL	MATERIAL: NYLON 6/6 UL-94 V-0, RMS- 19 COLOUR:NATURAL	"A"	"B" REF.	BUNDLE Ø	STANDARD FIX (DELETE THE # IN THE PART NUMBER)
STL#-250-4M-01	STL#-250-4M-19	4[0.157]	19.1[0.752]	5.1-7.65[0.201- 0.301]	 TO SNAP-LOCK IN A 4.75[0.19]±0.08[0.003] DIA. HOLE, IN A 0.8 TO 2 [0.03 TO 0.079] THICK PANEL
STL#-250-3-01	STL#-250-3-19	4.8[0.189]			
STL#-250-6M-01	STL#-250-6M-19	6[0.236]			
STL#-250-8M-01	STL#-250-8M-19	8[0.315]			
STL#-250-10M-01	STL#-250-10M-19	10[0.394]			
STL#-250-12M-01	STL#-250-12M-19	12[0.472]			
STL#-250-8-01	STL#-250-8-19	12.7[0.500]			
STL#-250-12-01	STL#-250-12-19	19.1[0.752]			
STL#-250-16-01	STL#-250-16-19	25.4[1]	23.1[0.909]	7.6-10.2[0.299- 0.402]	 TO SNAP-LOCK IN A 5.5[0.217] SQUARE HOLE, IN A 0.8 TO 2[0.03 TO 0.079] THICK PANEL
STL#-250-20-01	STL#-250-20-19	31.8[1.252]			
STL#-350-4M-01	STL#-350-4M-19	4[0.157]			
STL#-350-3-01	STL#-350-3-19	4.8[0.189]			
STL#-350-6M-01	STL#-350-6M-19	6[0.236]			
STL#-350-8M-01	STL#-350-8M-19	8[0.315]			
STL#-350-10M-01	STL#-350-10M-19	10[0.394]			
STL#-350-12M-01	STL#-350-12M-19	12[0.472]			
STL#-350-8-01	STL#-350-8-19	12.7[0.500]	27.7[1.091]	10.2-12.7[0.402- 0.500]	 TO PRESS-FIT IN A 7.9[0.31]±0.08[0.003] DIA. HOLE, IN A 6.4[0.25] MINIMUM THICK PANEL
STL#-350-12-01	STL#-350-12-19	19.1[0.752]			
STL#-350-16-01	STL#-350-16-19	25.4[1]			
STL#-350-20-01	STL#-350-20-19	31.8[1.252]			
STL#-450-4M-01	STL#-450-4M-19	4[0.157]			
STL#-450-3-01	STL#-450-3-19	4.8[0.189]			
STL#-450-6M-01	STL#-450-6M-19	6[0.236]			
STL#-450-8M-01	STL#-450-8M-19	8[0.315]			
STL#-450-10M-01	STL#-450-10M-19	10[0.394]	32.5[1.280]	12.7-15.2[0.500- 0.598]	 TO SNAP-LOCK IN A 6.5[0.256]±0.0875[0.0034] DIA. HOLE, IN A 0.8 TO 1.6[0.03 TO 0.06] THICK PANEL
STL#-450-12M-01	STL#-450-12M-19	12[0.472]			
STL#-450-8-01	STL#-450-8-19	12.7[0.500]			
STL#-450-12-01	STL#-450-12-19	19.1[0.752]			
STL#-450-16-01	STL#-450-16-19	25.4[1]			
STL#-450-20-01	STL#-450-20-19	31.8[1.252]			
STL#-600-4M-01	STL#-600-4M-19	4[0.157]			
STL#-600-3-01	STL#-600-3-19	4.8[0.189]			
STL#-600-6M-01	STL#-600-6M-19	6[0.236]	36.8[1.449]	17.8-20.3[0.701- 0.799]	 TO SUIT PANEL DETAIL FOR STL- J7 FIX, IN A 0.78 TO 2[0.031 TO 0.08] THICK PANEL
STL#-600-8M-01	STL#-600-8M-19	8[0.315]			
STL#-600-10M-01	STL#-600-10M-19	10[0.394]			
STL#-600-12M-01	STL#-600-12M-19	12[0.472]			
STL#-600-8-01	STL#-600-8-19	12.7[0.500]			
STL#-600-12-01	STL#-600-12-19	19.1[0.752]			
STL#-600-16-01	STL#-600-16-19	25.4[1]			
STL#-600-20-01	STL#-600-20-19	31.8[1.252]			
STL#-750-4M-01	STL#-750-4M-19	4[0.157]	36.8[1.449]	17.8-20.3[0.701- 0.799]	 TO SUIT PANEL DETAIL FOR STL- J9 FIX, IN A 0.8 TO 1.6[0.03 TO 0.06] THICK PANEL
STL#-750-3-01	STL#-750-3-19	4.8[0.189]			
STL#-750-6M-01	STL#-750-6M-19	6[0.236]			
STL#-750-8M-01	STL#-750-8M-19	8[0.315]			
STL#-750-10M-01	STL#-750-10M-19	10[0.394]			
STL#-750-12M-01	STL#-750-12M-19	12[0.472]			
STL#-750-8-01	STL#-750-8-19	12.7[0.500]			
STL#-750-12-01	STL#-750-12-19	19.1[0.752]			
STL#-750-16-01	STL#-750-16-19	25.4[1]	31.8[1.252]	17.8-20.3[0.701- 0.799]	 TO SUIT PANEL DETAIL FOR STL- J9 FIX, IN A 0.8 TO 1.6[0.03 TO 0.06] THICK PANEL
STL#-750-20-01	STL#-750-20-19	31.8[1.252]			

OTHER COLOURS AVAILABLE BY SPECIAL ORDER

NOTE:
ALTERNATE DIMENSIONS FOR REFERENCE ONLY

REPLACE # WITH FIX STYLE REQUIRED.
EXAMPLE:
"STL1-250-4M-01"



INFORMATION CONTAINED IN THIS DOCUMENT IS CONFIDENTIAL TO RICHCO INTERNATIONAL Co. Ltd. AND MAY NOT BE DISCLOSED OR REPRODUCED IN WHOLE OR PART WITHOUT THEIR WRITTEN CONSENT.

RICHCO, INC.
WWW.RICHCO-INC.COM

ALL DIMENSIONS IN mm[inches]
GENERAL TOLERANCES ±0.25
UNLESS OTHERWISE STATED
1 DECIMAL PLACE ±
2 DECIMAL PLACES ±
ANGULAR ±1°

THIRD ANGLE

MATERIAL: See table
COLOUR: See table

DESCRIPTION: STAND-OFF TWIST LOCK
PART NO: See Table

DRG No: 011-014
NPR No: RR10-0002
SHEET SIZE A4

DRN SF	DATE 14/02/11	CHKD TC	DATE 14/02/11	SCALE NTS	SHEET No. 1 OF 1
--------	---------------	---------	---------------	-----------	------------------

X-ON Electronics

Largest Supplier of Electrical and Electronic Components

Click to view similar products for [Cable Mounting & Accessories](#) category:

Click to view products by [ESSENTRA](#) manufacturer:

Other Similar products are found below :

[582603-1](#) [009333-000](#) [727844N003](#) [747](#) [809090N001](#) [843188-000](#) [8666](#) [967279N002](#) [DB-11](#) [1300840039](#) [1300900096](#) [1301800416](#)
[1302264450](#) [1300830184](#) [1300830729](#) [1300900039](#) [1301580036](#) [1301850553](#) [1301860939](#) [1302000074](#) [1302261315](#) [1302264431](#)
[1337706-2](#) [APA18-AK](#) [1724](#) [1-787307-1](#) [185491N001](#) [1868](#) [HP-6N](#) [C-202-C](#) [202C221-13-0](#) [CA7308-000](#) [8S23-75FR-CS8184](#) [2684](#) [9648](#)
[3089](#) [988382-000](#) [A72821-000](#) [AA401](#) [173506-000](#) [1823](#) [202C292-13-0](#) [202C302-13-0](#) [2109](#) [300625](#) [3330](#) [3412](#) [356247-1](#) [M9142](#)
[M9143](#)