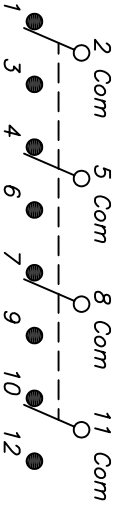


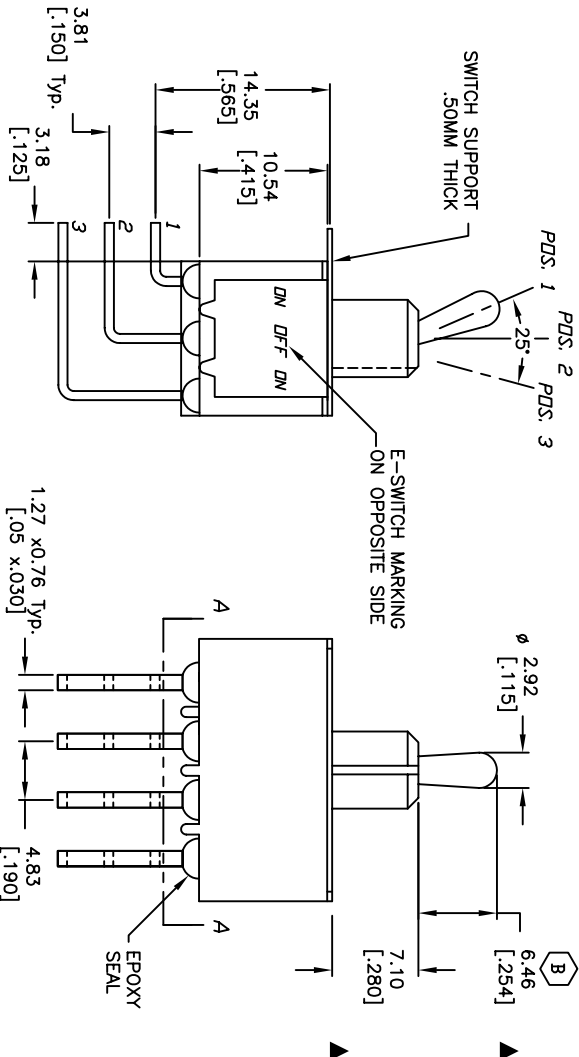
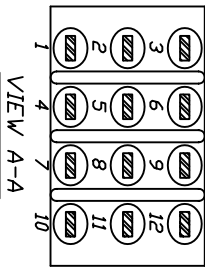
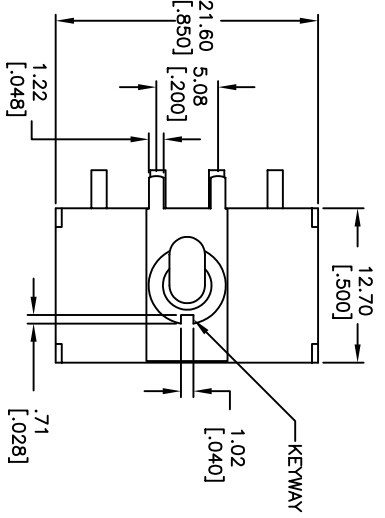
RECOMMENDED P.C.B. LAYOUT  
SCALE: 2X



| SWITCH FUNCTION |        |           |
|-----------------|--------|-----------|
| PQS. 1          | PQS. 2 | PQS. 3    |
| DN              | OFF    | DN        |
| 2-3,5-6         | DPEN   | 2-1,5-4   |
| 8-9,11-12       |        | 8-7,11-10 |

NOTES:

1. ALL DIMENSIONS IN MM [INCH]
2. GENERAL TOLERANCE: X.X=±0.4 X.XX=±0.25
3. TERMINAL NUMBERS FOR REF ONLY
4. RATING: 5A @120VACor 28VDC  
2A @250VAC. w/resistive loads
5. CONTACT & TERM MATERIAL:  
Cu Alloy w/Silver plate.
6. ELECTRIC LIFE: 50,000 make-and-break cycles  
at full load.
7. INSULATION RESISTANCE: 1,000 Mega-ohm min.
8. DIELECTRIC STRENGTH: 1,000 V RMS @sea level.
9. OPERATING TEMP.: -30°C to 85°C
10. ▲ DENOTES CRITICAL PARAMETER.



|      |         |                               |         |      |
|------|---------|-------------------------------|---------|------|
| B    | 18526   | * UPDATED FOR ACTUATOR HEIGHT | 5/11/09 | BLR  |
| A    | 13403   | * RELEASED FOR PRODUCTION     | 8/26/03 | AR   |
| REV. | PCR No. | DESCRIPTION                   | DATE    | CHKD |

|       |  |          |     |                  |     |
|-------|--|----------|-----|------------------|-----|
| TITLE |  | E SWITCH |     | LAMAR INDUSTRIES |     |
| SCALE |  | DATE     | DR  | DWG              | REV |
| 2:1   |  | 5/11/09  | BLR | T146010          | B   |

THE INFORMATION CONTAINED IN THIS DOCUMENT IS PROPRIETARY TO E-SWITCH AND IS NOT TO BE COPIED OR TRANSFERRED

## X-ON Electronics

Largest Supplier of Electrical and Electronic Components

*Click to view similar products for [Toggle Switches](#) category:*

*Click to view products by [E-Switch](#) manufacturer:*

Other Similar products are found below :

[8928K478](#) [020017-13](#) [60012L](#) [6006L](#) [CS115W](#) [CS120W](#) [637H/25](#) [6663](#) [7101SPDV30BE](#) [7103SDV30BE](#) [7105D](#) [7108P3YAV2BE](#)  
[71YY50282](#) [7300K36](#) [7301K38](#) [7306K36](#) [7310K36](#) [7506K4](#) [7592K6](#) [7660K12](#) [7691K14](#) [7700K1](#) [8396K108](#) [8824K14](#) [8828K13](#) [8835K3](#)  
[8858K44](#) [PS83-121G](#) [1-1825192-0](#) [A201SCWZB04](#) [A207SYCB04](#) [A208J61ZQ0004](#) [A221T1TCQ](#) [A232M1YCQ](#) [A323S1CWZQ](#)  
[A423S1CWZG-M8](#) [1201W](#) [12156AX408](#) [12147AGKX679](#) [12246X778](#) [12TW49-3D](#) [130312](#) [13037L](#) [13001X](#) [AE101MD1W4B04](#)  
[AE208SD1W4B04](#) [MS24659-22D](#) [MS27407-5](#) [1520230-9](#) [1520231-1](#)