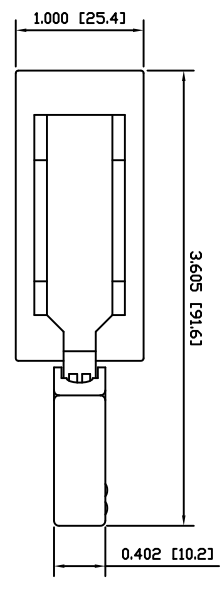


<p>8</p>	<p>7</p>	<p>6</p>	<p>5</p>	<p>4</p>
-----------------	-----------------	-----------------	-----------------	-----------------



COLORS

BODY:
Black

ACTUATOR:
Black

LOOK:
None

SPECIFICATIONS

FUNCTION:
ZP11 OFF-(ON)

RATINGS:
24A 125VAC
12A 250VAC
2HP 125/250VAC

OPERATING FORCE:
2.0kgf±0.5kgf at Highest Point

ELECTRICAL LIFE:
50,000 Cycles

TEMPERATURE:
Operating: 0°C to 55°C

APPROVALS:
ROHS
COMPLIANT

MATERIALS

LOWER BODY:
Phenolic (PF), UL94 V-0

UPPER BODY:
Polyamide 6/6 (PA66), UL94 V-0

ACTUATOR:
Polyamide 6/6 (PA66), UL94 V-0

ACTUATOR RIVET:
Copper

ACTUATOR LINK:
Polyamide 6/6 (PA66), UL94 V-0

PLATE:
Polyamide 6/6 (PA66), UL94 V-0

SEAL:
Nitrile Butuhine Rubber (NBR), UL94 V-0

CONTACT HOLDER:
Polyamide 6/6 (PA66), UL94 V-0

MAIN SPRING:
Steel

SLIDERS:
Steel

MOBILE CONTACTS:
Silver Plated Brass

CONTACT SPRINGS:
Steel

CONTACTS:
Silver Alloy Clad Copper

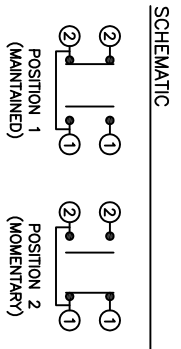
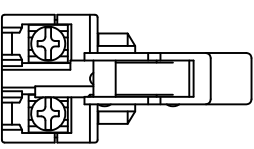
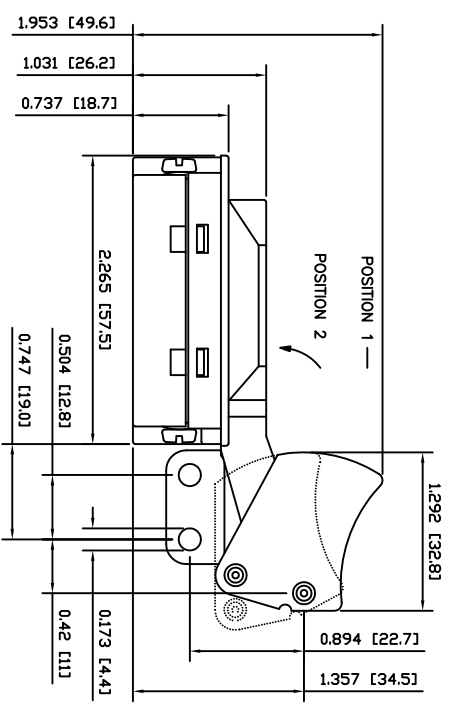
TERMINALS:
Silver Polished Brass

TERMINAL SCREWS
Steel

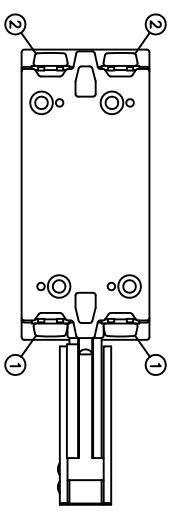
TERMINAL HARDWARE:
Steel

GREASE:
Silicone Based Grease

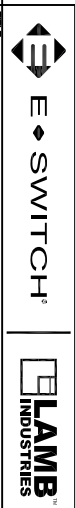
<p>B</p>	<p>6</p>	<p>5</p>	<p>4</p>	<p>3</p>
-----------------	-----------------	-----------------	-----------------	-----------------



<p>C</p>	<p>7</p>	<p>6</p>	<p>5</p>	<p>4</p>
-----------------	-----------------	-----------------	-----------------	-----------------



<p>D</p>	<p>8</p>	<p>7</p>	<p>6</p>	<p>5</p>
-----------------	-----------------	-----------------	-----------------	-----------------



HY38-6B8-021-000

THE INFORMATION CONTAINED IN THIS DOCUMENT IS PROPRIETARY TO E-SWITCH AND IS NOT TO BE COPIED OR TRANSMITTED

<p>8</p>	<p>7</p>	<p>6</p>	<p>5</p>	<p>4</p>
-----------------	-----------------	-----------------	-----------------	-----------------

X-ON Electronics

Largest Supplier of Electrical and Electronic Components

Click to view similar products for [Rocker Switches](#) category:

Click to view products by [E-Switch](#) manufacturer:

Other Similar products are found below :

[LTI LA6E-1S-WH-RC-FN12VXCR1](#) [6-1571986-9](#) [8007K26N324V52](#) [8055K32Z7V](#) [8055K52Z7V](#) [8138K20E6M50](#) [84206L](#) [84312LX](#)
[PREDD5-07F-BB0GW](#) [999-16716-002](#) [999-16716-003](#) [999-16716-004](#) [A101J1V3Q004](#) [A101J2ZQ004](#) [A101J4ZQ004](#) [A101J51CB0004](#)
[A103J1ZQ004](#) [A201J1AQ004](#) [A201J3ZB004](#) [A201J50ZQ004](#) [A203J51ZQ0004](#) [A435S1YZQ](#) [H8500XBBBBBL-A](#) [H8653VBBG2577W](#)
[HB130CHNWWNAAC](#) [R13112ABB-602W](#) [1251.0303](#) [AE205J60V3B004](#) [1352.0107](#) [1500G51E](#) [1571099-3](#) [1571987-4](#) [1571987-5](#)
[1571989-7](#) [1571988-5](#) [B123J77V7B2](#) [B226J50W4Q22P](#) [B433J37ZQ22M](#) [160212E](#) [1634200-7](#) [1801.1164](#) [1839.1502](#) [PANEL-PLUG-VHP-](#)
[BLACK](#) [PANEL-PLUG-VHP-WT](#) [K1ABBSCADN](#) [K2ABAAAAAA](#) [KG312A2DXD246X](#) [250011E714](#) [2600HM11E](#) [2600R21E](#)