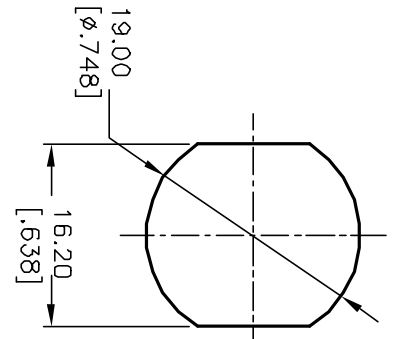


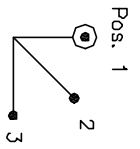
NOTES:

1. ALL DIMENSIONS IN MM [INCH]
2. GENERAL TOLERANCE: 0.0=±0.4
0.00=±0.25
3. TERM. NOS. FOR REF. ONLY
4. CONTACT RATING: 4A @125VAC/28VDC, 2A @250VAC
5. CONTACT RESISTANCE: Below 10 milliohms
6. DIELECTRIC STRENGTH: 1KV RMS min. at sea level
7. ELECTRICAL LIFE: 10,000 make-and-break cycles at full load.
8. LOCK: bright nickel plated zinc alloy with nickel facing (black and polished chrome facing available)
9. Tumbler mechanism: 4-disc tumbler
10. KEYS: brass with code no. (2 Keys)
11. CONTACTS: silver plated Cu (Q contact material)
12. TERMINALS: silver plated Cu (Q contact material)
13. CONTACT SPRING: piano wire
14. MOUNTING NUT: nickel plated zinc alloy



RECOMMEND PANEL LAYOUT

CIRCUIT: DP (45° INDEXING)
CONTACT CONFIGURATION



SWITCH FUNCTION		
CONNECTED TERMINAL #		
POS. 1	POS. 2	POS. 3
8-1, 4-5	1-2, 5-6	2-3, 6-7

A		10459		RELEASED FOR PRODUCTION		TITLE	
REV.		ECN NO.		DESCRIPTION		DATE	
A		10459		RELEASED FOR PRODUCTION		K0130B-A126	
REV.		ECN NO.		DESCRIPTION		DATE	
A		10459		RELEASED FOR PRODUCTION		12/8/99	
SCALE		1.5:1		DATE		12/8/99	
DR		MM		DWG		K200241	
REV		A		THE INFORMATION CONTAINED IN THIS DOCUMENT IS PROPRIETARY TO E-SWITCH AND IS NOT TO BE COPIED OR TRANSMITTED			



X-ON Electronics

Largest Supplier of Electrical and Electronic Components

Click to view similar products for [Keylock Switches](#) category:

Click to view products by [E-Switch](#) manufacturer:

Other Similar products are found below :

[89496-09](#) [58J1007](#) [58J8A45-01B05N](#) [719-0201-000](#) [719-0202-000](#) [719-0702-000](#) [719-5504-000](#) [84800-04](#) [GKNC33L](#) [GKNC3L](#)
[PVA2OAH5](#) [HA1K-2C2VA-2](#) [14-136.025K](#) [14-235.022K](#) [AS6H-2K2A](#) [AS6M-2K1B](#) [AS6Q-2K2A](#) [AS6Q-3K2A](#) [1571487-1](#) [HW4K-2BF20](#)
[KEY-AS6](#) [KH3C-20C](#) [8928K493](#) [2SWK131AL102](#) [AS6M-2K1A](#) [AS6Q-2K1PB](#) [51-401.036D](#) [51-401.036K](#) [51-414.036D](#) [HW1K-31BF20](#)
[HW1K-3HF20](#) [Y1112-2027CLFT](#) [51-155.025D](#) [51-295.022D](#) [51-404.036D](#) [51-405.036D](#) [51-415.036D](#) [1-1437597-8](#) [58J8A36-01B04N](#)
[58M1422](#) [86945-05](#) [719-0204-000](#) [719-0205-000](#) [719-0801-000](#) [719-0804-000](#) [719-0805-000](#) [88422-18](#) [58J8A90-01C02N](#) [58J9P36-](#)
[01B09N](#) [58J8A36-01C03N](#)