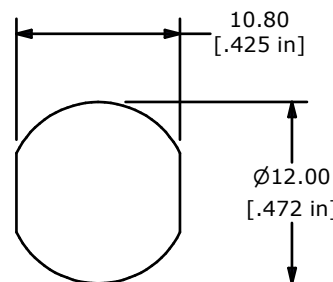
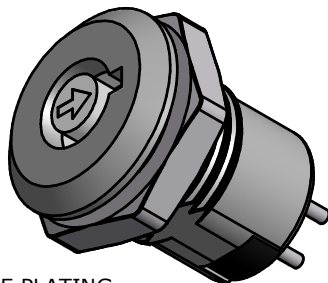


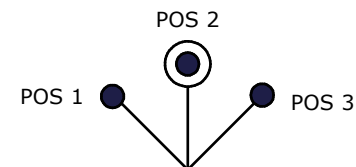
HT (HIGH TEMPERATURE)  
PLASTIC  
HTPA-100AG7B

NOTES:

1. ALL DIMENSIONS IN MM[INCH]
2. GENERAL TOLERANCE: x.x= ±0.4  
x.xx= ±0.25
3. TERM. NOS. FOR REFERENCE ONLY.
4. RATING: 1A @125VAC, 0.5A @250VAC
5. CONTACT RESISTANCE: 10mΩ
6. DIELECTRIC STRENGTH: 1000 VAC-1MINUTE
- ▲7. MATERIALS:  
HOUSING: ZINC ALLOY W/CHROME PLATING  
CYLINDER: ZINC ALLOY W/CHROME PLATING  
TERMINAL AND CONTACTS: SILVER PLATED  
KEYS (2) KEY CODE 1506: ZINC ALLOY, CHROME PLATING
8. ▲ DENOTES CRITICAL PARAMETER.
9. 2002/95/EC (ROHS) COMPLIANT



RECOMENDED PANEL CUTOUT



CIRCUIT: SPST  
CONTACT CONFIGURATION  
45° INDEXING

SWITCH FUNCTION		
POS 1	POS 2	POS 3
1-2	OFF	3-4

LEGEND

- = INDICATES KEY PULL POSSIBLE
- = DETENT POSITION

▲10. PACKAGING:

- LARGE BAG CONTAINING:  
SMALL BAG OF 20 KEYLOCK SWITCHES  
SMALL BAG OF 20 HEXNUTS

LARGE BAG CONTAINING 20 PAIRS OF KEYS



B	21204	CHANGE PACKAGING	8/13/13	EBP
A	19220	RELEASED FOR PRODUCTION	7/23/10	BLR
REV	PCR NO	DESCRIPTION	DATE	BY

TITLE KO132D1506HT				
SCALE 2=1	DATE 7/23/2010	DR BLR	DWG K400124	REV B

THE INFORMATION CONTAINED IN THIS DOCUMENT IS PROPRIETARY TO E-SWITCH AND IS NOT TO BE COPIED OR TRANSFERRED

## X-ON Electronics

Largest Supplier of Electrical and Electronic Components

*Click to view similar products for [Keylock Switches](#) category:*

*Click to view products by [E-Switch](#) manufacturer:*

Other Similar products are found below :

[89496-09](#) [58J1007](#) [58J8A45-01B05N](#) [719-0201-000](#) [719-0202-000](#) [719-0702-000](#) [719-5504-000](#) [84800-04](#) [GKNC33L](#) [GKNC3L](#)  
[PVA2OAH5](#) [HA1K-2C2VA-2](#) [14-136.025K](#) [14-235.022K](#) [AS6H-2K2A](#) [AS6M-2K1B](#) [AS6Q-2K2A](#) [AS6Q-3K2A](#) [1571487-1](#) [HW4K-2BF20](#)  
[KEY-AS6](#) [KH3C-20C](#) [8928K493](#) [2SWK131AL102](#) [AS6M-2K1A](#) [AS6Q-2K1PB](#) [51-401.036D](#) [51-401.036K](#) [51-414.036D](#) [HW1K-31BF20](#)  
[HW1K-3HF20](#) [Y1112-2027CLFT](#) [51-155.025D](#) [51-295.022D](#) [51-404.036D](#) [51-405.036D](#) [51-415.036D](#) [1-1437597-8](#) [58J8A36-01B04N](#)  
[58M1422](#) [86945-05](#) [719-0204-000](#) [719-0205-000](#) [719-0801-000](#) [719-0804-000](#) [719-0805-000](#) [88422-18](#) [58J8A90-01C02N](#) [58J9P36-](#)  
[01B09N](#) [58J8A36-01C03N](#)