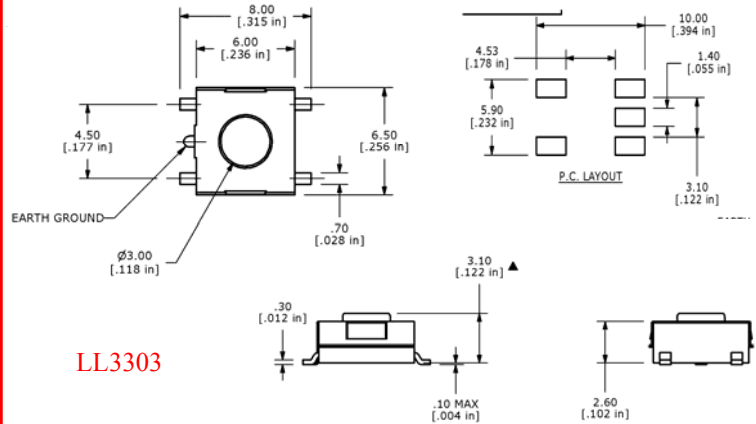
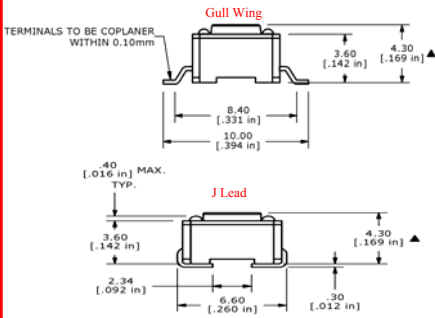
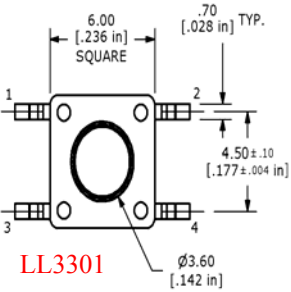
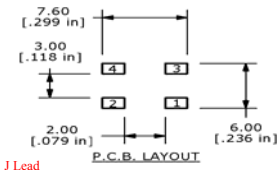
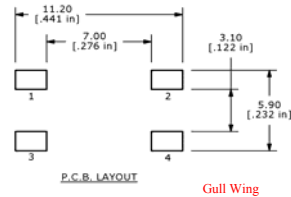


LL SERIES LONG LIFE SMT TACTILE SWITCHES



MECHANICAL SPECIFICATIONS

Mechanical Life: 5 Million Cycles
 Static Load: 2000 grams for 15 seconds
 Force: 65 Grams

ELECTRICAL SPECIFICATIONS

Contact Rating: 12VDC, 50mA
 Contact Resistance (Initial Max.): 50mΩ @ 5VDC, 10mA
 "End of Life": Avg. 1Ω See note* (TTL/CMOS Compatible)

Insulation Resistance (min. @100V): 100MΩ
 Dielectric Strength (50Hz., 1 Min.): 250VAC
 Bounce: <10m Sec. Max

*Due to normal contact wear, resistance at the end of life may be as high as 10Ω

ENVIRONMENTAL SPECIFICATIONS

Operating Temp: -20°C to +70°C Silver
 Storage Temp: -30°C to +80°C



How To Order

SERIES	MODEL	ACTUATOR HEIGHT	GRAM FORCE	CONTACT MATERIAL	TERMINATION
LL	3301 3303	3301 A=5.0mm B=9.5mm C=8.0mm D=13.0mm E=7.3mm F=7.0mm N=4.3mm P=8.5mm T=2.4mm □ SP=2.8mm □	F065	Q=Silver	G= Gull Wing J= J Lead *
		3303 (NONE) =3.1MM A=3.4MM □ = Square Snap-on actuator head— Height is 7.3mm.			* Not Available for LL3303

X-ON Electronics

Largest Supplier of Electrical and Electronic Components

Click to view similar products for [Pushbutton Switches](#) category:

Click to view products by [E-Switch](#) manufacturer:

Other Similar products are found below :

[8940K2012](#) [LW1L-M1C10V-A](#) [LW1L-M1C70-A](#) [LW2L-A1C20M-GD](#) [LW2L-M1C20M-A](#) [60324L](#) [M22-D-R-GB0/K11](#) [M7E-HRN2](#)
[67021K512](#) [67081K512X](#) [701PB580](#) [7190K101](#) [7199K101](#) [810K12910](#) [810KSV30B](#) [MML21EA2ADK](#) [MML21KA3ABK](#)
[MML23KA3AC05K-001](#) [MML23KW3AA01W](#) [8418K2](#) [8442K3](#) [8450K1](#) [860K11911T01A](#) [861901](#) [861K11911T01A07](#)
[861K13810T00A14](#) [861K13911](#) [8646AB6X718UL](#) [8646ABUL](#) [9001KXRK](#) [907AYY100](#) [PMHD155A1](#) [95-313.000](#)
[9533CD4+U574+U4922](#) [95-414.000](#) [99-450.837](#) [99-453.837](#) [PV3H2B0NN-341](#) [1203MRA](#) [A22NZBGANGA](#) [A22NZBMMNGA](#)
[A22NZBNANGA](#) [A22NZMPATRA](#) [A2PMA1X03EC56](#) [A3A-5123-02](#) [A3A-7140](#) [A3A-7310](#) [A3A-7340](#) [A3U-TMW-A2C-5M](#) [A595](#)