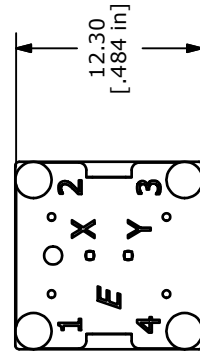
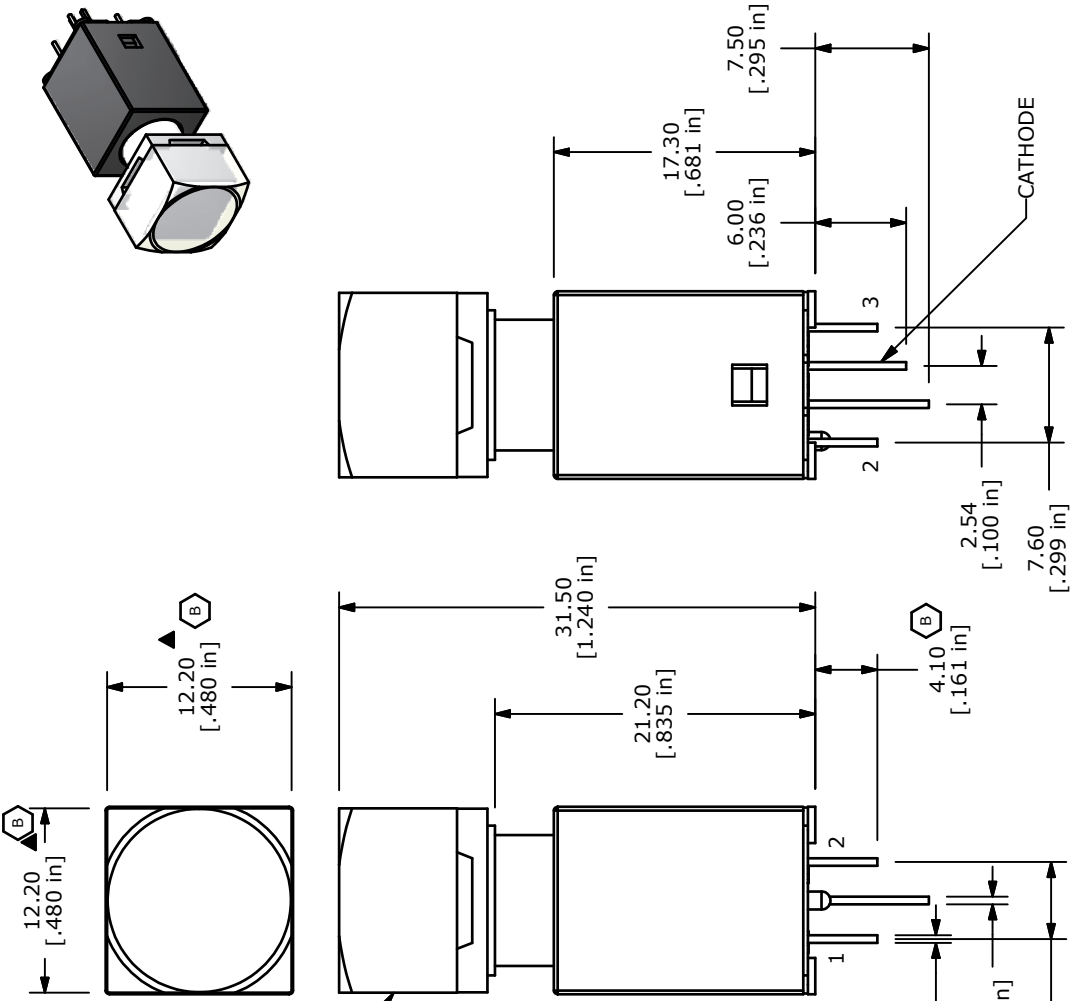


NOTES:

1. ALL DIMENSIONS IN MM [INCH]
2. GENERAL TOLERANCE: X.X±0.4  
X.XX±0.25
3. TERM. NOS. FOR REFERENCE ONLY.
4. RATING: 20VDC, 100mA MAX; SPST
5. CONTACT RESISTANCE: 150 MILLI-OHM MAX.
6. INSULATION RESISTANCE: 10MEGA-OHM MIN @500VDC.
7. DIELECTRIC STRENGTH: 500VAC FOR 1 MINUTE
8. OPERATING FORCE: 250±x50GF
9. OPERATING LIFE: 50,000,000 CYCLES
10. OPERATING TEMP: -5°C TO +60°C
11. STORAGE TEMPERATURE: -40°C TO +90°C
12. TOTAL TRAVEL: 3.30mm±0.3
- ▲13. TRAVEL TO ELECTRICAL MAKE: 2.9 ±0.5MM
- ▲14. LED COLOR: BLUE
15. 2002/95/EC (ROHS) COMPLIANT
16. ▲ DENOTES CRITICAL PARAMETER.

CLEAR CAP WITH WHITE DIFFUSER



▲ LED SPECS	UNITS	BLUE
FORWARD CURRENT	mA	20
FORWARD VOLTAGE @20mA	V	3.0 Typ-4.0 Max
LUMINOUS INTENSITY @ .10mA	mcd	40 Typ



TITLE LP160A1ASTWB

B	19592	CHANGE DIMS: was 4.2 & 12.4	1/17/11	BGL
A	19259	New Release	8/20/10	rc
REV	PCR NO	DESCRIPTION	DATE	BY

THE INFORMATION CONTAINED IN THIS DOCUMENT IS PROPRIETARY TO E-SWITCH AND IS NOT TO BE COPIED OR TRANSFERRED

SCALE 2:1 DATE 7/29/2010 DR rc

DWG B160000 REV B

## X-ON Electronics

Largest Supplier of Electrical and Electronic Components

*Click to view similar products for [Pushbutton Switches](#) category:*

*Click to view products by [E-Switch](#) manufacturer:*

Other Similar products are found below :

[8940K2012](#) [LW1L-M1C10V-A](#) [LW1L-M1C70-A](#) [LW2L-A1C20M-GD](#) [LW2L-M1C20M-A](#) [60324L](#) [M22-D-R-GB0/K11](#) [M7E-HRN2](#)  
[67021K512](#) [67081K512X](#) [701PB580](#) [7190K101](#) [7199K101](#) [810K12910](#) [810KSV30B](#) [MML21EA2ADK](#) [MML21KA3ABK](#)  
[MML23KA3AC05K-001](#) [MML23KW3AA01W](#) [8418K2](#) [8442K3](#) [8450K1](#) [860K11911T01A](#) [861901](#) [861K11911T01A07](#)  
[861K13810T00A14](#) [861K13911](#) [8646AB6X718UL](#) [8646ABUL](#) [9001KXRK](#) [907AYY100](#) [PMHD155A1](#) [95-313.000](#)  
[9533CD4+U574+U4922](#) [95-414.000](#) [99-450.837](#) [99-453.837](#) [PV3H2B0NN-341](#) [1203MRA](#) [A22NZBGANGA](#) [A22NZBMMNGA](#)  
[A22NZBNANGA](#) [A22NZMPATRA](#) [A2PMA1X03EC56](#) [A3A-5123-02](#) [A3A-7140](#) [A3A-7310](#) [A3A-7340](#) [A3U-TMW-A2C-5M](#) [A595](#)