

# PB400 SERIES PUSHBUTTON SWITCH

ANTI-VANDAL SWITCHES  
 DETECTOR SWITCHES  
 DIP SWITCHES  
 KEYLOCK SWITCHES  
 NAVIGATION SWITCHES  
**PUSHBUTTON SWITCHES**  
 ROCKER SWITCHES  
 ROTARY SWITCHES  
 SLIDE SWITCHES  
 SNAP ACTION SWITCHES  
 TACTILE SWITCHES  
 TOGGLE SWITCHES  
 CAP OPTIONS



## APPLICATIONS / MARKETS



**RoHS**

## SPECIFICATIONS

**Electrical Rating:** 3A @ 30 VDC  
**Electrical Life:** 6,000 Cycles  
**Contact Resistance:** 30mΩ Max. Initial  
**Insulation Resistance:** 500MΩ Min. @ 500VDC  
**Dielectric Strength:** 500VAC for 1 minute  
**Operating Temperature:** -5°C to 60°C  
**Terminal:** Copper, Silver Plated  
**Travel:** Switch to make: 1.8mm  
           Latch: 2.2mm (Latching)  
           Full Actuation: 3.2mm  
**Contact Arrangement:** DPST  
**Actuation Force:** 3N~7N

## FEATURES & BENEFITS

- Low cost
- Right Angle pushbutton switch
- DPST
- Momentary or Latching function
- 3.2mm travel
- Optional black cap

## PART NUMBER CONFIGURATOR

Series



PB400

Mechanical Configuration



EE - Latching  
 OA - Momentary

Contact Material



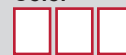
Q - Silver

Cap



X - No Cap  
 R1 - Cap (8.8mm)

Cap Color



BLK - Black

Specifications subject to change without notice 12.19.2017



**E-SWITCH®**

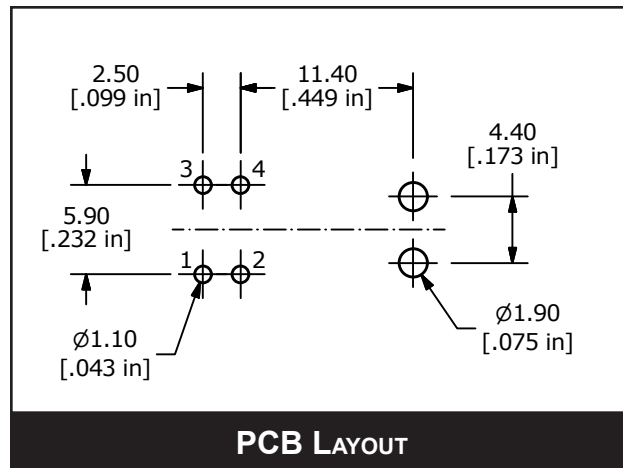
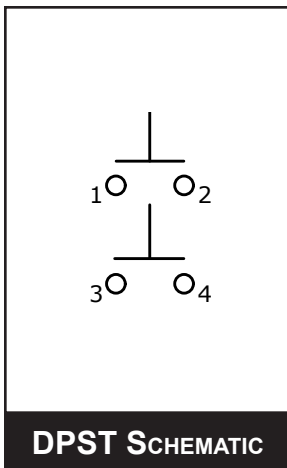
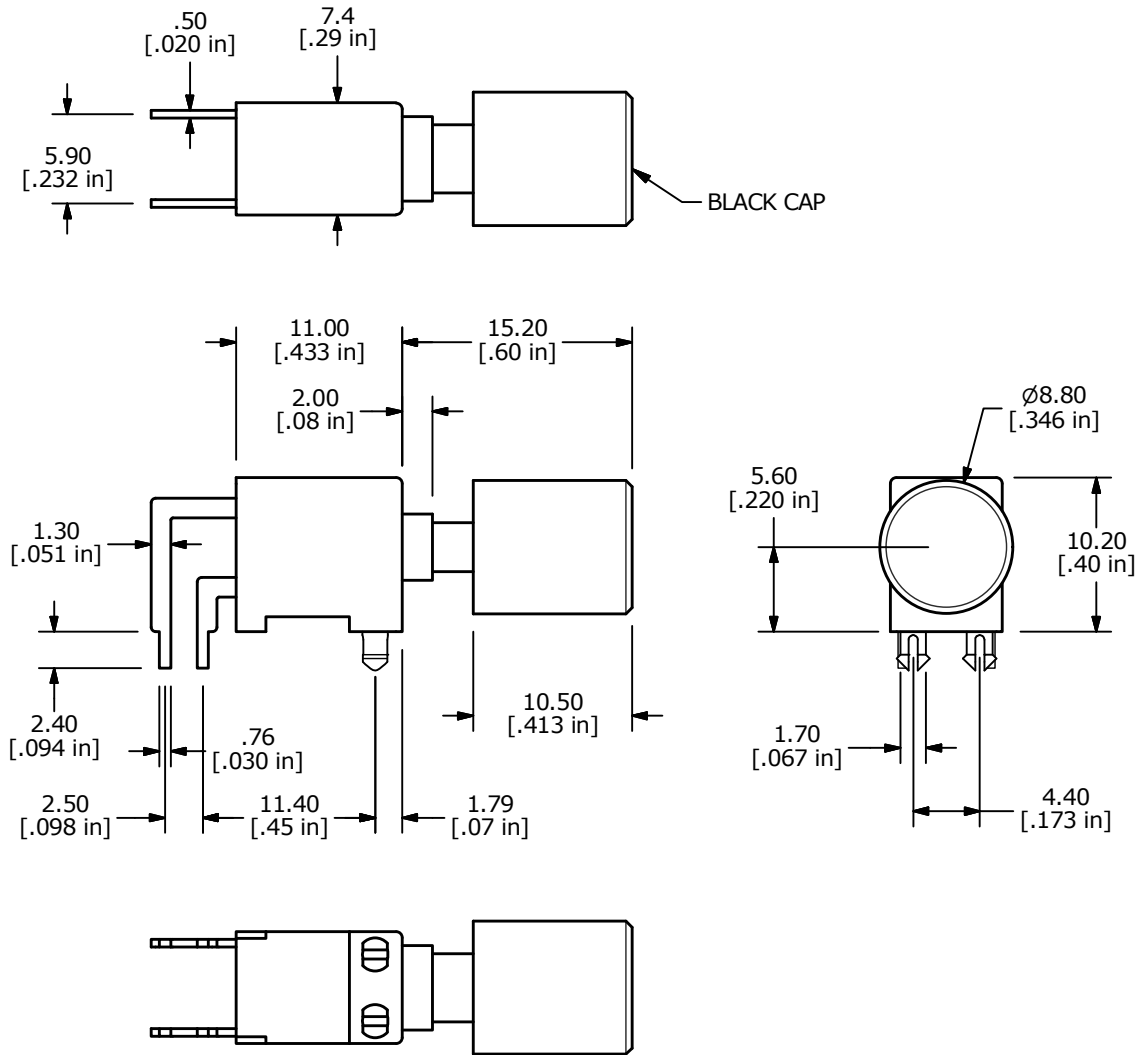
www.e-switch.com

800.867.2717

1

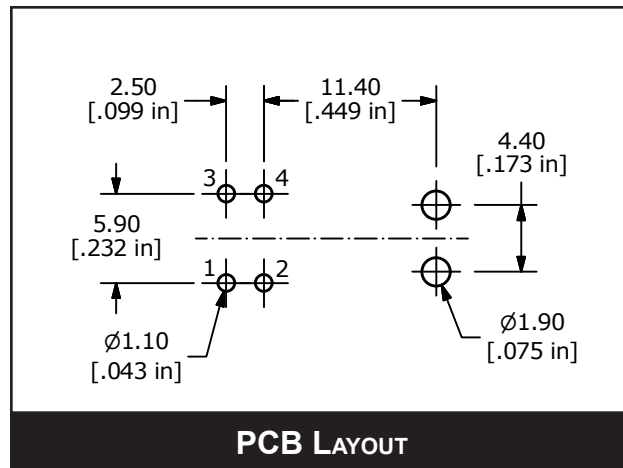
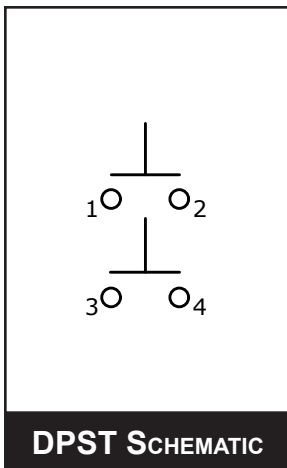
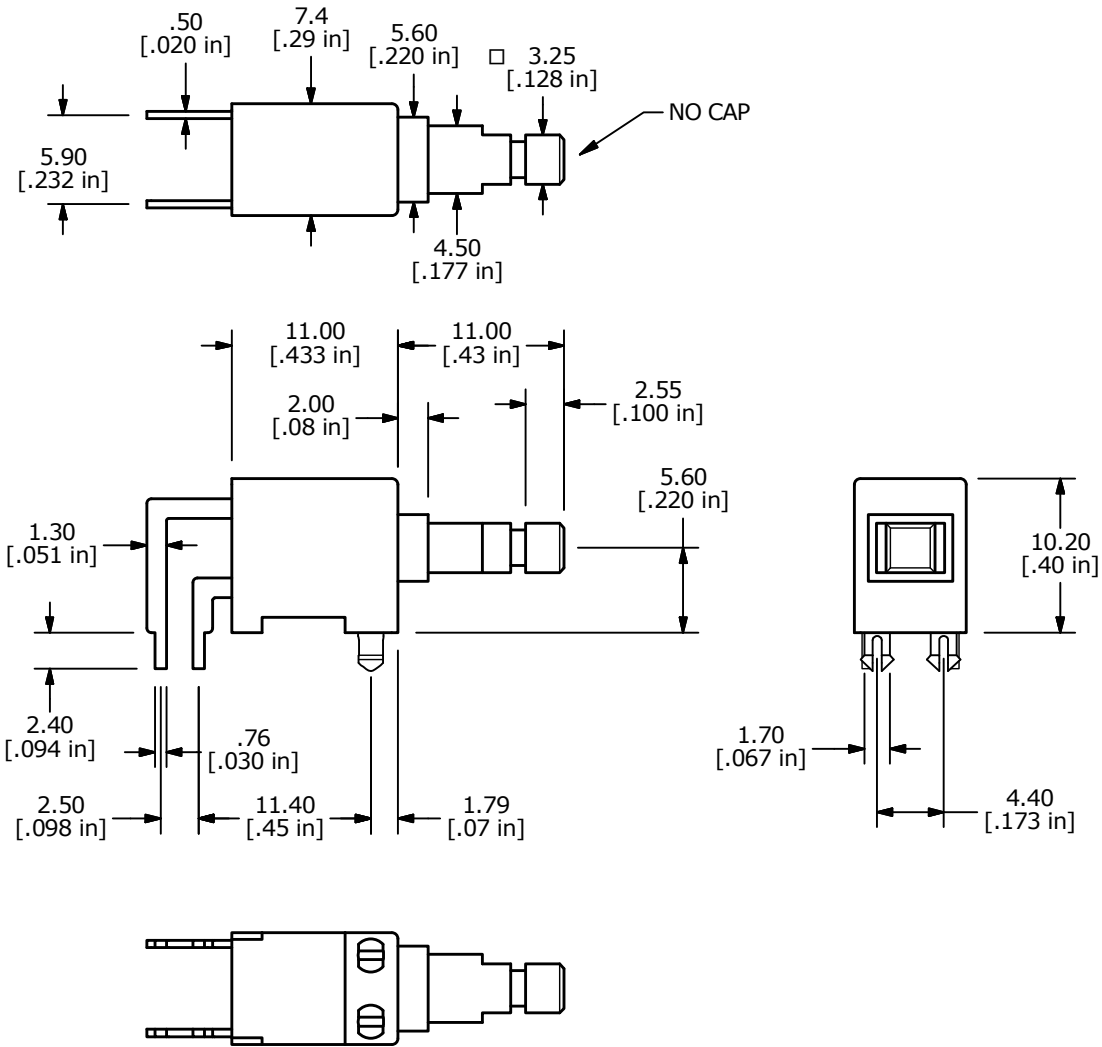
# PB400 SERIES PUSHBUTTON SWITCH

## BODY DIMENSIONS - WITH CAP



# PB400 SERIES PUSHBUTTON SWITCH

## BODY DIMENSIONS - WITHOUT CAP



## X-ON Electronics

Largest Supplier of Electrical and Electronic Components

*Click to view similar products for [Pushbutton Switches](#) category:*

*Click to view products by [E-Switch](#) manufacturer:*

Other Similar products are found below :

[8940K2012](#) [LW1L-M1C10V-A](#) [LW1L-M1C70-A](#) [LW2L-A1C20M-GD](#) [LW2L-M1C20M-A](#) [60324L](#) [M22-D-R-GB0/K11](#) [M7E-HRN2](#)  
[67021K512](#) [67081K512X](#) [701PB580](#) [7190K101](#) [7199K101](#) [810K12910](#) [810KSV30B](#) [MML21EA2ADK](#) [MML21KA3ABK](#)  
[MML23KA3AC05K-001](#) [MML23KW3AA01W](#) [8418K2](#) [8442K3](#) [8450K1](#) [860K11911T01A](#) [861901](#) [861K11911T01A07](#)  
[861K13810T00A14](#) [861K13911](#) [8646AB6X718UL](#) [8646ABUL](#) [9001KXRK](#) [907AYY100](#) [PMHD155A1](#) [95-313.000](#)  
[9533CD4+U574+U4922](#) [95-414.000](#) [99-450.837](#) [99-453.837](#) [PV3H2B0NN-341](#) [1203MRA](#) [A22NZBGANGA](#) [A22NZBMMNGA](#)  
[A22NZBNANGA](#) [A22NZMPATRA](#) [A2PMA1X03EC56](#) [A3A-5123-02](#) [A3A-7140](#) [A3A-7310](#) [A3A-7340](#) [A3U-TMW-A2C-5M](#) [A595](#)