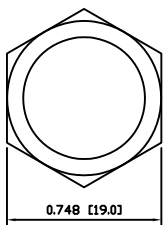
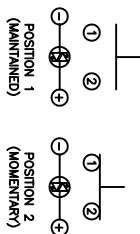
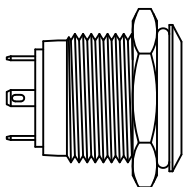
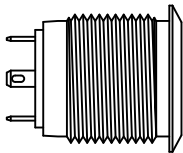


EXPLODED VIEW



ASSEMBLED VIEW



SCHEMATIC

FUNCTION: 1P1T OFF-(ON)

RATING: 2A 48VDC

ILLUMINATION VOLTAGE: 1.8V 20mA

CONTRACT RESISTANCE: 1,000MΩ Min. at 500VDC

INSULATION RESISTANCE: 1,000MΩ Min. at 500VDC

DIELECTRIC STRENGTH: 2,000VAC Min. for 1 Minute

ELECTRICAL LIFE: 200,000 Cycles

MECHANICAL LIFE: 1,000,000 Cycles

INGRESS PROTECTION: IP65

TEMPERATURE: Operating: -20°C to 70°C

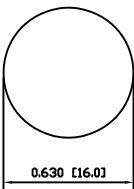
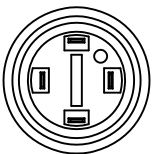
APPROVALS: ROHS COMPLIANT

COLORS AND FINISH

BODY: Stainless Steel
 Machine Finish
 ACTUATOR: Stainless Steel
 Machine Finish
 ILLUMINATION: Red (Forward)
 Red (Reverse)

MATERIALS

BUSHING: Stainless Steel (304)
 BASE: Polybutylene Terephthalate (PBT), UL94 V-2
 ACTUATOR: Stainless Steel (304)
 Polycarbonate (PC)
 HARDWARE: Nickel Plated Brass (H62)
 SEALING: Silicone Rubber
 SPRING: Stainless Steel (304)
 CONTACTS: Silver Alloy Plated Copper (AgCdO)
 TERMINALS: Brass (H62)
 O-RING: Silicone Rubber



SUGGESTED PANEL CUTOUT

MAXIMUM PANEL THICKNESS: 0.315 [8.0mm]

BODY	A	09/08/03	CAB
COLORS	A	09/08/03	CAB
MATERIALS	B	09/10/28	CAB
SPECIFICATIONS	A	09/08/03	CAB
REFERENCE	REV.	DATE	BY

THE INFORMATION CONTAINED IN THIS DOCUMENT IS PROPRIETARY TO E-SWITCH AND IS NOT TO BE COPIED OR TRANSMITTED

INITIAL RELEASE DESCRIPTION

2119 4/28/13 EBP
 FOR DATE DRAWN BY

SCALE: ±0.008 [±0.2] / ±.1
 DRAWING NOT TO SCALE

PROJECTION: THIRD ANGLE
 PART NUMBER: 52-PV6F240SS211

DATE: April 26, 2013

REVISION: A



PV6F240SS-211

X-ON Electronics

Largest Supplier of Electrical and Electronic Components

Click to view similar products for [Pushbutton Switches](#) category:

Click to view products by [E-Switch](#) manufacturer:

Other Similar products are found below :

[8940K2012](#) [LW1L-M1C10V-A](#) [LW1L-M1C70-A](#) [LW2L-A1C20M-GD](#) [LW2L-M1C20M-A](#) [60324L](#) [M22-D-R-GB0/K11](#) [M7E-HRN2](#)
[67021K512](#) [67081K512X](#) [701PB580](#) [7190K101](#) [7199K101](#) [810K12910](#) [810KSV30B](#) [MML21EA2ADK](#) [MML21KA3ABK](#)
[MML23KA3AC05K-001](#) [MML23KW3AA01W](#) [8418K2](#) [8442K3](#) [8450K1](#) [860K11911T01A](#) [861901](#) [861K11911T01A07](#)
[861K13810T00A14](#) [861K13911](#) [8646AB6X718UL](#) [8646ABUL](#) [9001KXRK](#) [907AYY100](#) [PMHD155A1](#) [95-313.000](#)
[9533CD4+U574+U4922](#) [95-414.000](#) [99-450.837](#) [99-453.837](#) [PV3H2B0NN-341](#) [1203MRA](#) [A22NZBGANGA](#) [A22NZBMMNGA](#)
[A22NZBNANGA](#) [A22NZMPATRA](#) [A2PMA1X03EC56](#) [A3A-5123-02](#) [A3A-7140](#) [A3A-7310](#) [A3A-7340](#) [A3U-TMW-A2C-5M](#) [A595](#)