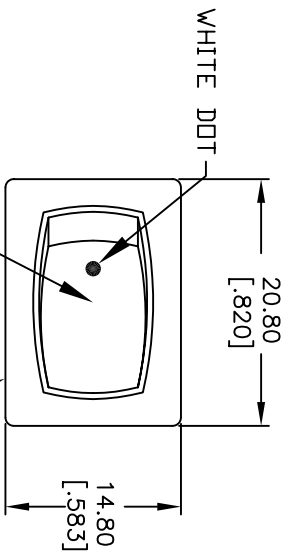
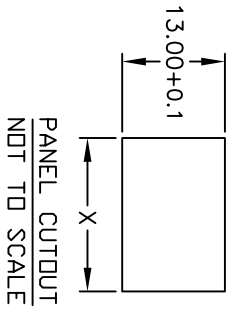
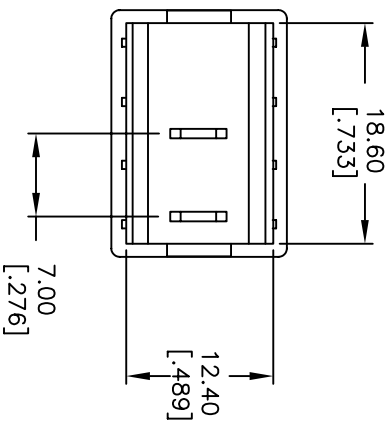
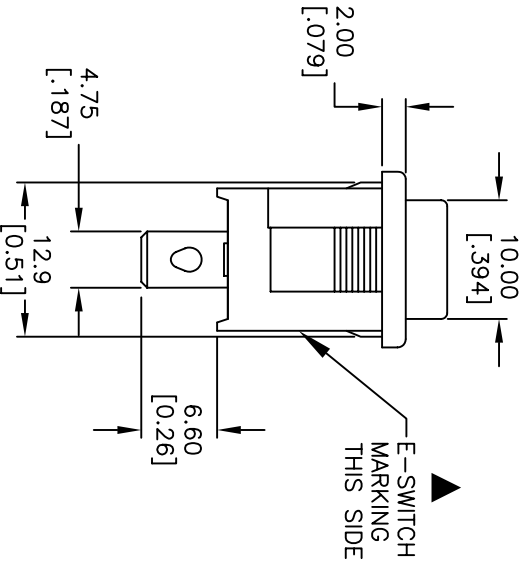
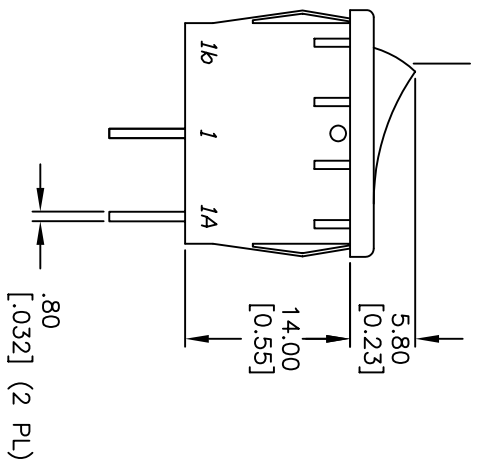


PANEL THICKNESS	X dimension
0.75-1.25 [0.30-.0491]	19.2-01 [7.561]
1.25-2.0 [0.49-.0791]	19.4-01 [7.641]
2.0-3.0 [0.79-.1181]	19.8-01 [7.801]

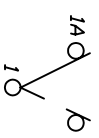


ACTUATOR: RED  
 WHITE DOT  
 BODY/HOUSING: BLACK



PANEL CUTOUT  
 NOT TO SCALE

SWITCH FUNCTION	
PDS. 1	PDS. 2
<DN>	DFE
1-1a	OPEN



CIRCUIT: SPST

( ) = MOMENTARY

- NOTES:
1. ALL DIMENSIONS IN MM [INCH]
  2. GENERAL TOLERANCE: X.X=±0.4 X.XX=±0.25
  3. TERMINAL NUMBERS FOR REF ONLY
  4. RATING: 15A @ 125VAC OR 8A @ 250VAC
  5. MATERIALS: TERMINALS: Silver Plated Copper Alloy CONTACTS: Coin Silver, Silver Plated
  6. ELECTRIC LIFE: 10,000 cycles
  7. CONTACT RESISTANCE: <20 Mega Ω
  8. INSULATION RESISTANCE: >1000 Mega Ω
  9. DIELECTRIC STRENGTH: >1500 V 1 minute >3000 V between poles
  10. 2002/95/EC (ROHS) COMPLIANT



REV.	ECN NO.	DESCRIPTION	DATE	CHKD
A	17379	RELEASED FOR PRODUCTION	6/12/07	TN
THE INFORMATION CONTAINED IN THIS DOCUMENT IS PROPRIETARY TO E-SWITCH AND IS NOT TO BE COPIED OR TRANSMERRED				

TITLE	SCALE	DATE	DR	DWG	REV
R1966FBLKREDAF	1.5:1	6/12/07	TN	M304199	A

## X-ON Electronics

Largest Supplier of Electrical and Electronic Components

*Click to view similar products for [Rocker Switches](#) category:*

*Click to view products by [E-Switch](#) manufacturer:*

Other Similar products are found below :

[LTI LA6E-1S-WH-RC-FN12VXCR1](#) [6-1571986-9](#) [8007K26N324V52](#) [8055K32Z7V](#) [8055K52Z7V](#) [8138K20E6M50](#) [84206L](#) [84312LX](#)  
[PREDD5-07F-BB0GW](#) [999-16716-002](#) [999-16716-003](#) [999-16716-004](#) [A101J1V3Q004](#) [A101J2ZQ004](#) [A101J4ZQ004](#) [A101J51CB0004](#)  
[A103J1ZQ004](#) [A201J1AQ004](#) [A201J3ZB004](#) [A201J50ZQ004](#) [A203J51ZQ0004](#) [A435S1YZQ](#) [H8500XBBBBL-A](#) [H8653VBBG2577W](#)  
[HB130CHNWWNAAC](#) [R13112ABB-602W](#) [1251.0303](#) [AE205J60V3B004](#) [1352.0107](#) [1500G51E](#) [1571099-3](#) [1571987-4](#) [1571987-5](#)  
[1571989-7](#) [1571988-5](#) [B123J77V7B2](#) [B226J50W4Q22P](#) [B433J37ZQ22M](#) [160212E](#) [1634200-7](#) [1801.1164](#) [1839.1502](#) [PANEL-PLUG-VHP-](#)  
[BLACK](#) [PANEL-PLUG-VHP-WT](#) [K1ABBSCADN](#) [K2ABAAAAAA](#) [KG312A2DXD246X](#) [250011E714](#) [2600HM11E](#) [2600R21E](#)