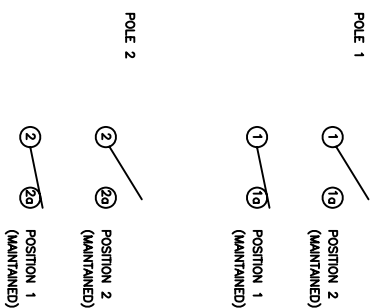


**SCHEMATIC**



**SPECIFICATIONS**

FUNCTION:  
 Pole 1: Off-On  
 Pole 2: Off-On  
 RATINGS:  
 10A 125VAC [3.0UW]  
 6(2)A 250V~ 1125 1E4 [VDE]  
 CONTACT RESISTANCE:  
 Inhibit: 35mΩ at 50VAC Min.  
 INSULATION RESISTANCE:  
 100MΩ at 500VDC Min.  
 DIELECTRIC STRENGTH:  
 1500VAC For 1 Minute  
 ELECTRICAL LIFE:  
 10,000 Cycles Min.  
 TEMPERATURE:  
 Operating: -20°C to 105°C [UL, cUL]  
 -20°C to 125°C [VDE]  
 APPROVALS:

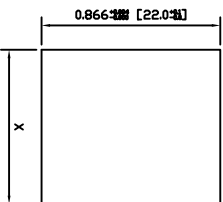
**MATERIALS**

BODY:  
 Polyamide 6/6 (PA66), UL94 V-2  
 ACTUATOR:  
 Polyamide 6/6 (PA66), UL94 V-2  
 LAMP LENS:  
 N/A  
 LAMP:  
 N/A  
 SPRING:  
 Steel  
 BALL:  
 Steel  
 MOBILE CONTACT:  
 Silver Plated Copper  
 CONTACTS:  
 Silver Plated Copper  
 TERMINALS:  
 Silver Plated Copper

**COLORS AND MARKINGS**

BODY:  
 Black  
 ACTUATOR/LENS:  
 Pole 1: Black  
 Pole 2: Black  
 MARKINGS:  
 Pole 1: /O Vertical  
 Pole 2: /O Vertical  
 MARKING COLOR:  
 Pole 1: White  
 Pole 2: White

**SUGGESTED PANEL CUTOUT**



PANEL THICKNESS	X
0.030~0.049 [0.75~1.25]	0.756 [19.2]
0.049~0.079 [1.25~2.00]	0.764 [19.4]
0.079~0.118 [2.00~3.00]	0.772 [19.6]

REVISION	REV.	DATE	BY

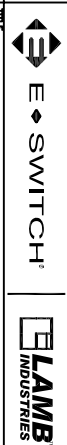
THE INFORMATION CONTAINED IN THIS DOCUMENT IS PROPRIETARY TO E-SWITCH-LAMB INDUSTRIES AND IS NOT TO BE COPIED OR TRANSMITTED

NEW RELEASE DESCRIPTION

2012 08/22/12

SCALE DRAWING NOT TO SCALE

DIMENSIONS INCHES [MILLIMETERS]  
 GENERAL TOLERANCES ±0.008 [±0.2] / ±1'  
 PROJECTION THIRD ANGLE



RA22131121

DATE AUG 22, 2012

REVISION A

## X-ON Electronics

Largest Supplier of Electrical and Electronic Components

*Click to view similar products for [Rocker Switches](#) category:*

*Click to view products by [E-Switch](#) manufacturer:*

Other Similar products are found below :

[LTI LA6E-1S-WH-RC-FN12VXCR1](#) [6-1571986-9](#) [8007K26N324V52](#) [8055K32Z7V](#) [8055K52Z7V](#) [8138K20E6M50](#) [84206L](#) [84312LX](#)  
[PREDD5-07F-BB0GW](#) [999-16716-002](#) [999-16716-003](#) [999-16716-004](#) [A101J1V3Q004](#) [A101J2ZQ004](#) [A101J4ZQ004](#) [A101J51CB0004](#)  
[A103J1ZQ004](#) [A201J1AQ004](#) [A201J3ZB004](#) [A201J50ZQ004](#) [A203J51ZQ0004](#) [A435S1YZQ](#) [H8500XBBBBBL-A](#) [H8653VBBG2577W](#)  
[HB130CHNWWNAAC](#) [R13112ABB-602W](#) [1251.0303](#) [AE205J60V3B004](#) [1352.0107](#) [1500G51E](#) [1571099-3](#) [1571987-4](#) [1571987-5](#)  
[1571989-7](#) [1571988-5](#) [B123J77V7B2](#) [B226J50W4Q22P](#) [B433J37ZQ22M](#) [160212E](#) [1634200-7](#) [1801.1164](#) [1839.1502](#) [PANEL-PLUG-VHP-](#)  
[BLACK](#) [PANEL-PLUG-VHP-WT](#) [K1ABBSCADN](#) [K2ABAAAAAA](#) [KG312A2DXD246X](#) [250011E714](#) [2600HM11E](#) [2600R21E](#)