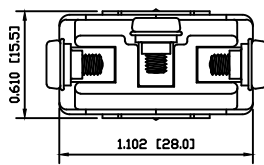


**MATERIALS**

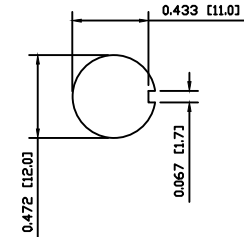
- BODY:**  
Phenolic, UL94 V-0
- ACTUATOR:**  
Nickel Plated Brass
- BUSHING:**  
Nickel Plated Brass
- HOUSING:**  
Nickel Plated Steel
- HARDWARE:**  
Nickel Plated Brass
- SPACER PLATE:**  
Epoxy Board
- SPRING:**  
Steel
- ACTUATOR PLUNGER:**  
Phenolic, UL94 V-0
- MOBILE CONTACT BAR:**  
Silver Plated Copper
- CENTER PIVOT:**  
Silver Plated Copper
- CONTACTS:**  
Silver Alloy Clad Copper
- TERMINALS:**  
Brass  
Steel

**SPECIFICATIONS**

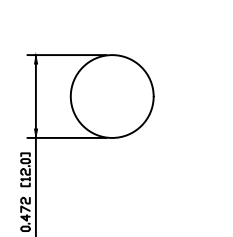
- FUNCTION:**  
1P2T ON-ON
- RATINGS:**  
ANSI/UL1054 and CAN/CSA C22.2 No.55 (E194579):  
20A 125VAC [cURus]  
15A 277VAC [cURus]  
2HP 125/277VAC [cURus]
- CONTACT RESISTANCE:**  
Initial: 10mΩ Max.
- INSULATION RESISTANCE:**  
10MΩ Min.
- DIELECTRIC STRENGTH:**  
1,500VAC for 1 Minute
- OPERATING LIFE:**  
6,000 Cycles [cURus]
- TEMPERATURE:**  
Operating: 0°C to 85°C [cURus]



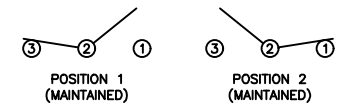
**SUGGESTED PANEL CUTOUT**



**ALTERNATE PANEL CUTOUT**



**SCHEMATIC**



ACTUATOR	B	10/06/10	CAB
BODY	B	10/06/10	CAB
MATERIALS	B	10/06/09	CAB
SPECIFICATIONS	B	10/06/09	CAB
REFERENCE	REV.	DATE	BY

THE INFORMATION CONTAINED IN THIS DOCUMENT IS PROPRIETARY TO E-SWITCH AND IS NOT TO BE COPIED OR TRANSFERRED

B	CORRECTED PANEL CUTOUT, SPECIFICATIONS, AND MATERIALS	19133	10/06/10	CAB
A	INITIAL RELEASE	PCRD0051	08/08/05	CAB
REV.	DESCRIPTION	PCR	DATE	DRAWN BY

DIMENSIONS	
INCHES [MILLIMETERS]	
GENERAL TOLERANCES	
±0.008 [±0.2] / ±1'	
SCALE	PROJECTION
DRAWING NOT TO SCALE	1:1

		TITLE	
		ST163D00	
SCALE	DRAWING NUMBER	DATE	REVISION
DRAWING NOT TO SCALE	34-ST163D00	JUNE 10, 2010	B

## X-ON Electronics

Largest Supplier of Electrical and Electronic Components

*Click to view similar products for [Toggle Switches](#) category:*

*Click to view products by [E-Switch](#) manufacturer:*

Other Similar products are found below :

[8928K478](#) [020017-13](#) [60012L](#) [6006L](#) [CS115W](#) [CS120W](#) [637H/25](#) [6663](#) [7101SPDV30BE](#) [7103SDV30BE](#) [7105D](#) [7108P3YAV2BE](#)  
[71YY50282](#) [7300K36](#) [7301K38](#) [7306K36](#) [7310K36](#) [7506K4](#) [7592K6](#) [7660K12](#) [7691K14](#) [7700K1](#) [8396K108](#) [8824K14](#) [8828K13](#) [8835K3](#)  
[8858K44](#) [PS83-121G](#) [1-1825192-0](#) [A201SCWZB04](#) [A207SYCB04](#) [A208J61ZQ0004](#) [A221T1TCQ](#) [A232M1YCQ](#) [A323S1CWZQ](#)  
[A423S1CWZG-M8](#) [1201W](#) [12156AX408](#) [12147AGKX679](#) [12246X778](#) [12TW49-3D](#) [130312](#) [13037L](#) [13001X](#) [AE101MD1W4B04](#)  
[AE208SD1W4B04](#) [MS24659-22D](#) [MS27407-5](#) [1520230-9](#) [1520231-1](#)