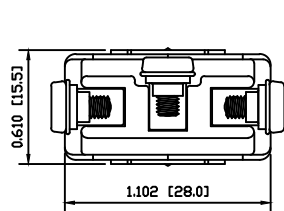


**MATERIALS**

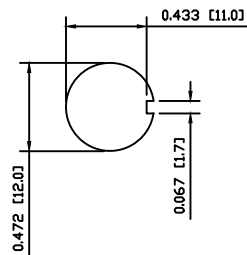
- BODY: Phenolic, UL94 V-0
- ACTUATOR: Nickel Plated Brass
- BUSHING: Nickel Plated Brass
- HOUSING: Nickel Plated Steel
- HARDWARE: Nickel Plated Brass
- SPACER PLATE: Epoxy Board
- SPRING: Steel
- ACTUATOR PLUNGER: Phenolic, UL94 V-0
- MOBILE CONTACT BAR: Silver Plated Copper
- CENTER PIVOT: Silver Plated Copper
- CONTACTS: Silver Alloy Clad Copper
- TERMINALS: Brass, Steel

**SPECIFICATIONS**

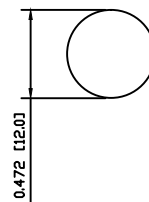
- FUNCTION: 1P2T (ON)-OFF-(ON)
- RATINGS: ANSI/UL1054 and CAN/CSA C22.2 No.55 (E194579): 20A 125VAC [cURus], 15A 277VAC [cURus], 1.5HP 125/277VAC [cURus]
- CONTACT RESISTANCE: Initial: 10mΩ Max.
- INSULATION RESISTANCE: 10MΩ Min.
- DIELECTRIC STRENGTH: 1,500VAC for 1 Minute
- OPERATING LIFE: 6,000 Cycles [cURus]
- TEMPERATURE: Operating: 0°C to 85°C [cURus]
- APPROVALS: RoHS COMPLIANT



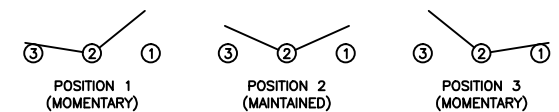
SUGGESTED PANEL CUTOUT



ALTERNATE PANEL CUTOUT



SCHEMATIC



ACTUATOR	-	-	-
BODY	B	10/06/10	CAB
MATERIALS	B	10/06/09	CAB
SPECIFICATIONS	B	10/06/09	CAB
REFERENCE	REV.	DATE	BY

THE INFORMATION CONTAINED IN THIS DOCUMENT IS PROPRIETARY TO E-SWITCH AND IS NOT TO BE COPIED OR TRANSFERRED

C	change Actuator ht. from 31.0 to 32.3	22530	9/29/16	MW
B	CORRECTED PANEL CUTOUT, SPECIFICATIONS, AND MATERIALS	19133	10/06/10	CAB
A	INITIAL RELEASE	PCRO0051	09/08/05	CAB
REV.	DESCRIPTION	PCR	DATE	DRAWN BY

DIMENSIONS	
INCHES [MILLIMETERS]	
GENERAL TOLERANCES	
±0.008 [±0.2] / ±1"	
SCALE	PROJECTION
DRAWING NOT TO SCALE	

**E-SWITCH®**

TITLE: **ST16DD00**

DRAWING NUMBER	DATE	REVISION
34-ST16DD00	JUNE 10, 2010	C

## X-ON Electronics

Largest Supplier of Electrical and Electronic Components

*Click to view similar products for [Toggle Switches](#) category:*

*Click to view products by [E-Switch](#) manufacturer:*

Other Similar products are found below :

[8928K478](#) [020017-13](#) [60012L](#) [6006L](#) [CS115W](#) [CS120W](#) [637H/25](#) [6663](#) [7101SPDV30BE](#) [7103SDV30BE](#) [7105D](#) [7108P3YAV2BE](#)  
[71YY50282](#) [7300K36](#) [7301K38](#) [7306K36](#) [7310K36](#) [7506K4](#) [7592K6](#) [7660K12](#) [7691K14](#) [7700K1](#) [8396K108](#) [8824K14](#) [8828K13](#) [8835K3](#)  
[8858K44](#) [PS83-121G](#) [1-1825192-0](#) [A201SCWZB04](#) [A207SYCB04](#) [A208J61ZQ0004](#) [A221T1TCQ](#) [A232M1YCQ](#) [A323S1CWZQ](#)  
[A423S1CWZG-M8](#) [1201W](#) [12156AX408](#) [12147AGKX679](#) [12246X778](#) [12TW49-3D](#) [130312](#) [13037L](#) [13001X](#) [AE101MD1W4B04](#)  
[AE208SD1W4B04](#) [MS24659-22D](#) [MS27407-5](#) [1520230-9](#) [1520231-1](#)