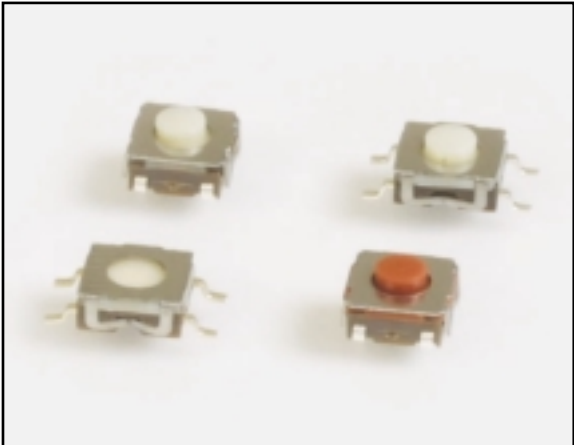


SERIES **TL** SWITCHES

SURFACE MOUNT TACT SWITCHES



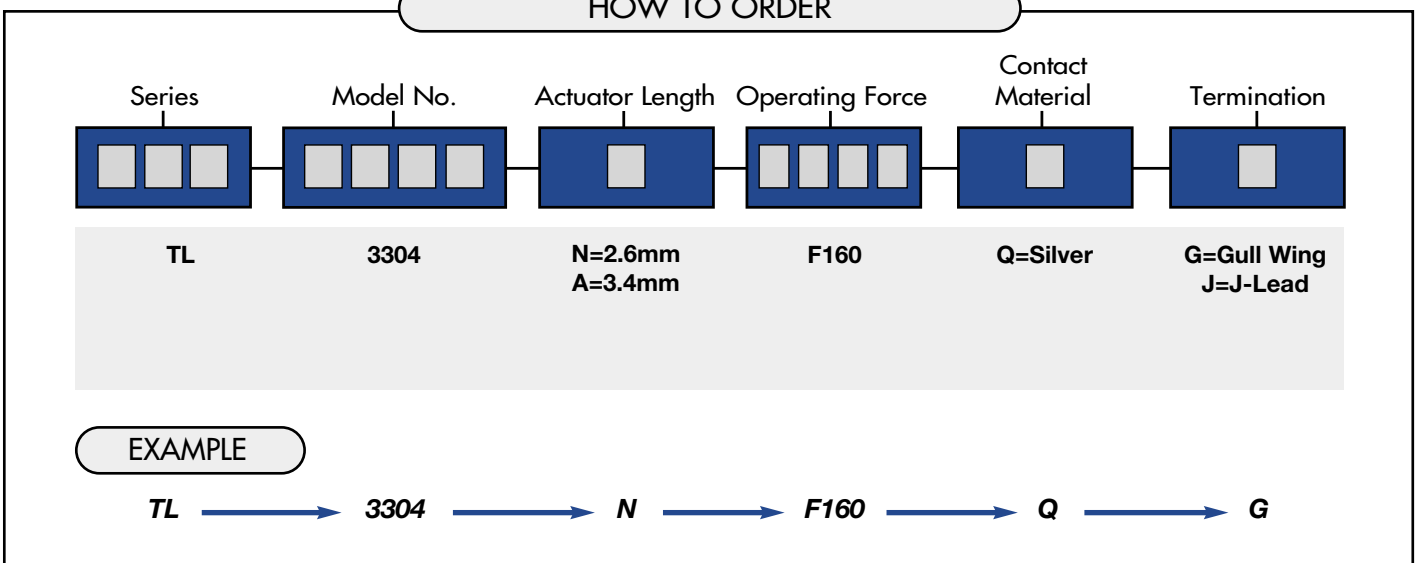
SPECIFICATIONS

Rating:	50mA @ 50 VDC
Mechanical Life:	100,000 cycles typical
Contact Resistance:	20mΩ max. initial @ 2-4 VDC, 100mA
Insulation Resistance:	100MΩ min.
Dielectric Strength:	1,000 Vrms at sea level
Operating Force:	160 ± 50 gf

MATERIALS

Housing:	Polyphenylene Sulfide (PPS)
Actuator:	Rubber
Cover:	Stainless steel
Contacts:	Silver-clad phosphor bronze
Terminals:	Silver-clad brass

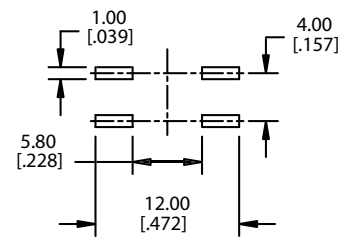
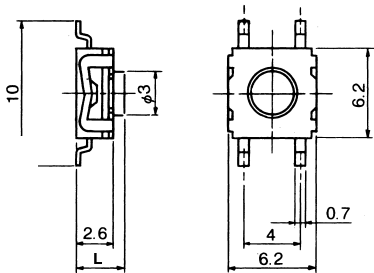
HOW TO ORDER



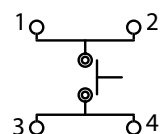
SPECIFICATIONS SUBJECT TO CHANGE WITHOUT NOTICE.

Gull Wing Termination

P.C. MOUNTING



Schematic

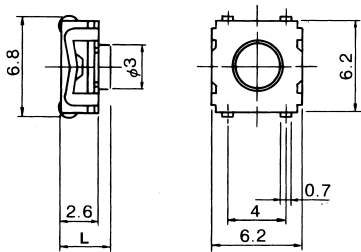


SERIES TL SWITCHES

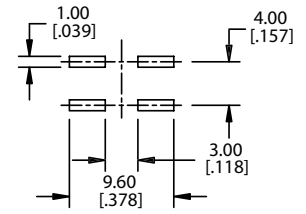
SURFACE MOUNT TACT SWITCHES



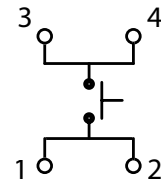
J-Lead Termination



P.C. MOUNTING



Schematic



ACTUATOR OPTIONS

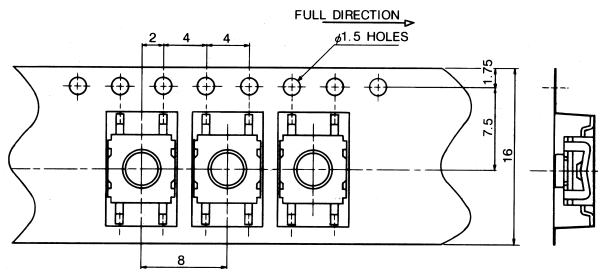
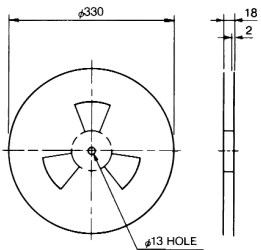
Actuator Length (L)
N = 2.6 mm
A = 3.4 mm

TERMINATION

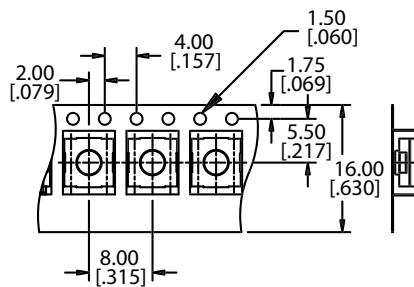
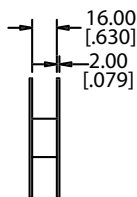
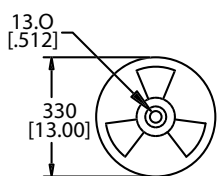
Termination
G = Gull Lead
J = J-Lead

STANDARD REELS

Gull Wing



J-Lead



SPECIFICATIONS SUBJECT TO CHANGE WITHOUT NOTICE.

X-ON Electronics

Largest Supplier of Electrical and Electronic Components

Click to view similar products for [Tactile Switches](#) category:

Click to view products by [E-Switch](#) manufacturer:

Other Similar products are found below :

[5GTH92001](#) [5GTH9202242](#) [1-1977120-4](#) [ADTSA62RV](#) [ADTSA63KV](#) [ADTSA644NV](#) [ADTSMW66NV](#) [ADTSMW67RV](#) [B3F-3123](#) [B3F-6055A](#) [B3F-B32-01-KIT](#) [1977177-8](#) [1977266-1](#) [ADTS644KV](#) [ADTSA61RV](#) [ADTSA62KV](#) [ADTSA63NV](#) [ADTSA63RV](#) [ADTSM21NSVTR](#) [ADTSM32NVTR](#) [ADTSM61YVTR](#) [ADTSM63SVTR](#) [ADTSM644KVTR](#) [ADTSMW64RV](#) [ADTSMW69NV](#) [FSMRA4JHA04](#) [GS4.70F300QP](#) [3ESH9R](#) [506E00201](#) [MJTP1164TR](#) [3FTL600RAS](#) [3FTL640RAS](#) [Y96K132V0FPLFS](#) [101-TS5022T1601-EV](#) [5GSH92001](#) [KSJ0A231](#) [80SH LFG](#) [EVQ-P1D05K](#) [MJTP1162TR](#) [ADTSM63KV](#) [2-1977120-7](#) [TSJW-5.2-260-TR](#) [KMT011MNGJLHS](#) [ADTSA648RV](#) [70-201.0](#) [ADTSM62KSVTR](#) [ATA600VTR](#) [ADTSG66RV](#) [ADTS61NV](#) [ADTSM62KVTR](#) [ADTSM25KSVB](#)