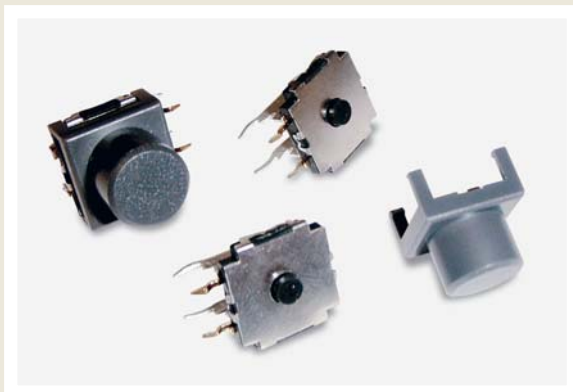




SERIES TL 6190 SWITCHES

TACT SWITCHES - SEALED RIGHT ANGLE



FEATURES & BENEFITS

- ▶ Reliable dome technology
- ▶ Strong tactile force
- ▶ Multiple operating force
- ▶ Process sealed
- ▶ Right angle

APPLICATIONS/MARKETS

- ▶ Telecommunications
- ▶ Consumer electronics
- ▶ Audio/visual
- ▶ Medical equipment
- ▶ Computer/servers/peripherals

SPECIFICATIONS

Contact Rating:	50mA@12 VDC
Life Expectancy (Mechanical):	100,000 cycles
Life Expectancy (Electrical):	100,000 cycles
Contact Resistance:	100mΩ max. intial
Insulation Resistance:	100MΩ (Min@ 100V)
Dielectric Strength:	500 VDC
Actuation Force:	220 ± 60 gf
Operating Temperature (Switch):	-40°C to +105°C
Operating Temperature (Button):	-40°C to +85°C
Travel:	0.50 ± 0.20mm

MATERIALS

Housing:	Nylon
Cover:	Stainless Steel
Actuator:	Silicone rubber
Bracket:	Tin, plated
Terminals:	Copper alloy, plated
Contact:	Copper alloy, plated



HOW TO ORDER

SERIES	MODEL NO.	ACTUATOR ("L" Dimension)	OPERATING FORCE	PLATING	BUTTON	BUTTON COLOR
TL	6190	A = 2.90mm	F160 F220 F320	Q = Silver R = Gold	R = Round	GRY = Gray BLK = Black WHT = White RED = Red

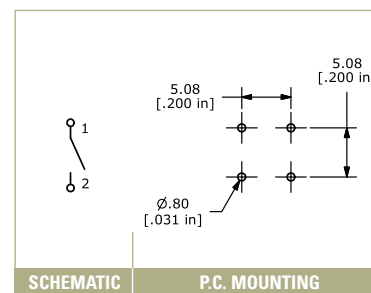
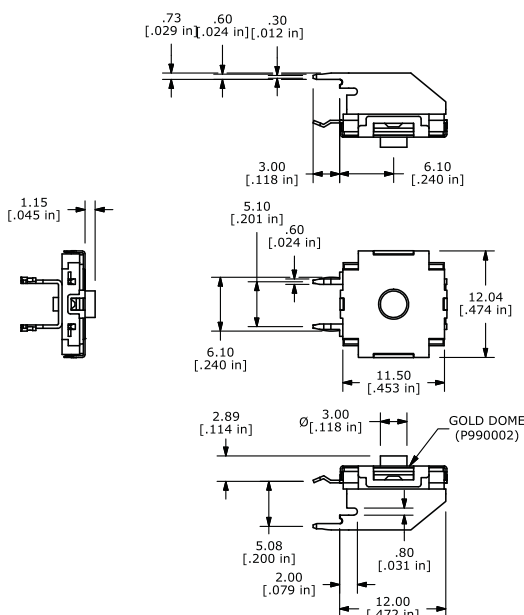
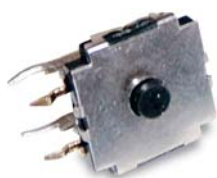


Example Ordering Number

TL-6190-A-F220-Q-R-GRY

Specifications subject to change without notice.

TL 6190



X-ON Electronics

Largest Supplier of Electrical and Electronic Components

Click to view similar products for [Tactile Switches](#) category:

Click to view products by [E-Switch](#) manufacturer:

Other Similar products are found below :

[5GTH92001](#) [5GTH9202242](#) [1-1977120-4](#) [ADTSA62RV](#) [ADTSA63KV](#) [ADTSA644NV](#) [ADTSMW66NV](#) [ADTSMW67RV](#) [B3F-3123](#) [B3F-6055A](#) [B3F-B32-01-KIT](#) [1977177-8](#) [1977266-1](#) [ADTS644KV](#) [ADTSA61RV](#) [ADTSA62KV](#) [ADTSA63NV](#) [ADTSA63RV](#) [ADTSM21NSVTR](#) [ADTSM32NVTR](#) [ADTSM61YVTR](#) [ADTSM63SVTR](#) [ADTSM644KVTR](#) [ADTSMW64RV](#) [ADTSMW69NV](#) [FSMRA4JHA04](#) [GS4.70F300QP](#) [3ESH9R](#) [506E00201](#) [MJTP1164TR](#) [3FTL600RAS](#) [3FTL640RAS](#) [Y96K132V0FPLFS](#) [101-TS5022T1601-EV](#) [5GSH92001](#) [KSJ0A231](#) [80SH LFG](#) [EVQ-P1D05K](#) [MJTP1162TR](#) [ADTSM63KV](#) [2-1977120-7](#) [TSJW-5.2-260-TR](#) [KMT011MNGJLHS](#) [ADTSA648RV](#) [70-201.0](#) [ADTSM62KSVTR](#) [ATA600VTR](#) [ADTSG66RV](#) [ADTS61NV](#) [ADTSM62KVTR](#) [ADTSM25KSVB](#)