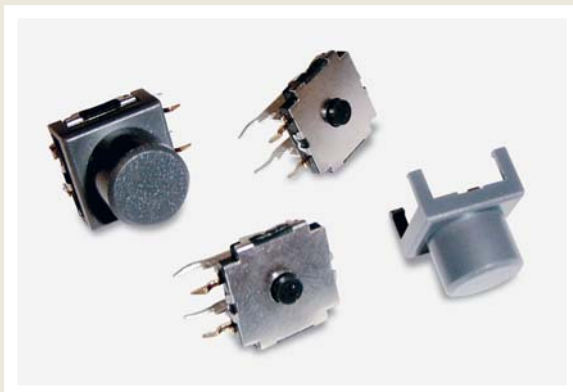




# SERIES TL 6190 SWITCHES

## TACT SWITCHES - SEALED RIGHT ANGLE



### FEATURES & BENEFITS

- ▶ Reliable dome technology
- ▶ Strong tactile force
- ▶ Multiple operating force
- ▶ Process sealed
- ▶ Right angle

### APPLICATIONS/MARKETS

- ▶ Telecommunications
- ▶ Consumer electronics
- ▶ Audio/visual
- ▶ Medical equipment
- ▶ Computer/servers/peripherals

### SPECIFICATIONS

Contact Rating:	50mA@12 VDC
Life Expectancy (Mechanical):	100,000 cycles
Life Expectancy (Electrical):	100,000 cycles
Contact Resistance:	100mΩ max. intial
Insulation Resistance:	100MΩ (Min@ 100V)
Dielectric Strength:	500 VDC
Actuation Force:	220 ± 60 gf
Operating Temperature (Switch):	-40°C to +105°C
Operating Temperature (Button):	-40°C to +85°C
Travel:	0.50 ± 0.20mm

### MATERIALS

Housing:	Nylon
Cover:	Stainless Steel
Actuator:	Silicone rubber
Bracket:	Tin, plated
Terminals:	Copper alloy, plated
Contact:	Copper alloy, plated



### HOW TO ORDER

SERIES	MODEL NO.	ACTUATOR ("L" Dimension)	OPERATING FORCE	PLATING	BUTTON	BUTTON COLOR
TL	6190	A = 2.90mm	F160 F220 F320	Q = Silver R = Gold	R = Round	GRY = Gray BLK = Black WHT = White RED = Red

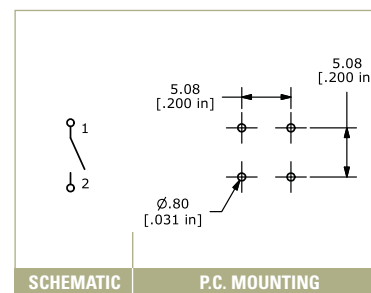
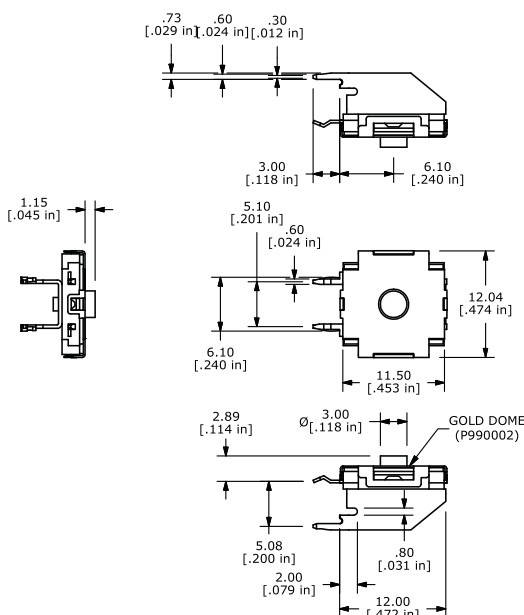


### Example Ordering Number

TL-6190-A-F220-Q-R-GRY

Specifications subject to change without notice.

## TL 6190



## X-ON Electronics

Largest Supplier of Electrical and Electronic Components

*Click to view similar products for [Switch Actuators](#) category:*

*Click to view products by [E-Switch](#) manufacturer:*

Other Similar products are found below :

[LW1B-A0L](#) [LW1B-M0](#) [680-4000-00](#) [704.012.618](#) [704.411.018I](#) [704.412.0](#) [704.633.1](#) [704.730.1](#) [704.733.0](#) [84-1221.7](#) [862.8102](#) [G6083](#)  
[9PA24](#) [A0107X](#) [A019307](#) [ADC-418G](#) [12MA7](#) [ASDHYY-B](#) [HW1F-3G](#) [HW1M-L2222](#) [HW4S-31L](#) [200-.704-00](#) [JS-10008](#) [JS-10083](#) [JS-10118](#) [JS-10133](#) [JS-10277](#) [JS-10389](#) [JS-150](#) [JS-552](#) [JS-555](#) [JS-68](#) [JS-6-B](#) [JS-91](#) [JS-94](#) [22-211.011](#) [9001KXSDC](#) [92-458.500](#) [SAPT654133](#)  
[2PA3](#) [SW53AA2](#) [302561](#) [LW2L-A0](#) [3E-10.4](#) [3E-12.0](#) [468-10243-001](#) [51-030.005](#) [JM-13](#) [JS-10120](#) [JS-138-B](#)