



DTA-0512FWX-W

27W



**FEATURES:**

- 3-pole IEC320-C6 Class I and C8 Class II AC inlet available
- 2 year warranty
- Black color plastic enclosed case



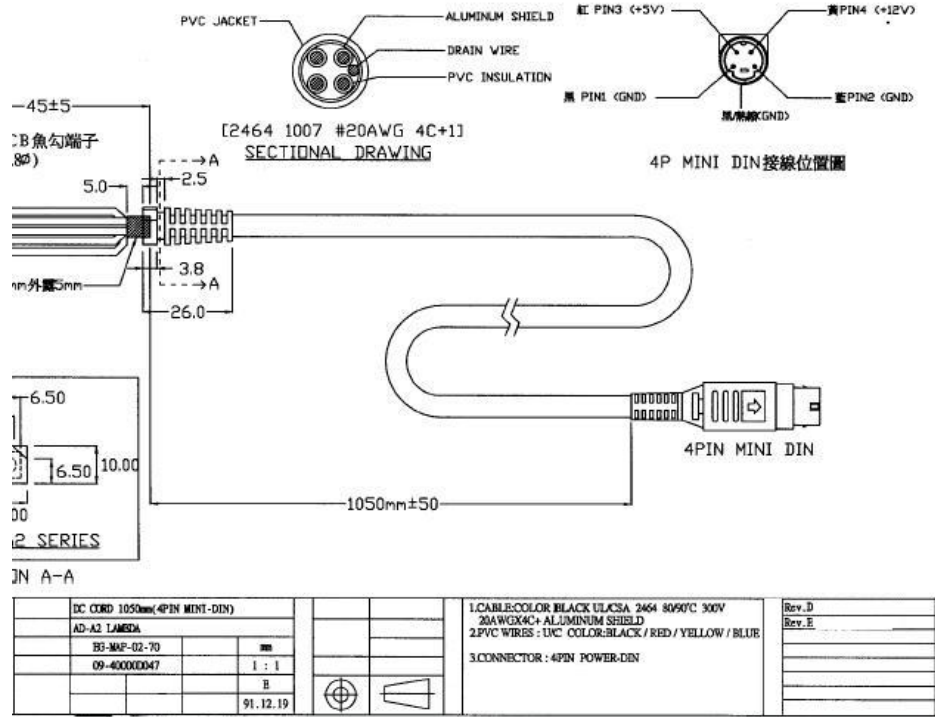
MODEL/CHANNEL		Unit	DTA27-0512FWX-W 2-Pole			DTA27-0512FWX-W 3-Pole	
<b>OUTPUT</b>	Output Voltage	Vdc	+5	+12	+5	+12	
	Output Current Min.	A	0.5	0.1	0.5	0.1	
	Output Current Max.	A	2~5	0.2~1.5	2~5	0.2~1.5	
	Ripple and Noise(max.) *3	mV	50	120	50	120	
	Voltage Regulations	-	±5%				
	Hold Up Time	-	10ms typical at full load @ 115VAC				
	Power	W	27W				
<b>INPUT</b>	Input Voltage	Vac	90VAC~264VAC				
	Input Current	A	1A@264Vac 2A@90Vac				
	Line Frequency	Hz	47Hz to 63Hz				
	Efficiency	A	>70% 115VAC at full load (DC Conversion)				
<b>Protection</b>	Over Voltage Protection	-	Auto Recovery				
	Short circuit protection	-	Auto Recovery				
<b>Environmental Agencies</b>	Safety	-	UL 1950	CSA 22.2-234	TUV EN60950	IEC 950	CE: EMC &LVD
	EMC Standards	-	FCC Class B; CISRP22 Class B; EN 55022 Class B				
	MTBF	-	>100'000 hours at full load and 25°C ambient temperature.				
<b>Environment</b>	Operating Temperature	-	0°C to 40°C				
	Storage Temperature	-	-10°C to +70°C				
<b>Dimension</b>	Size(WxHxD) / Weight	mm/g	106Lx60Wx 30H				

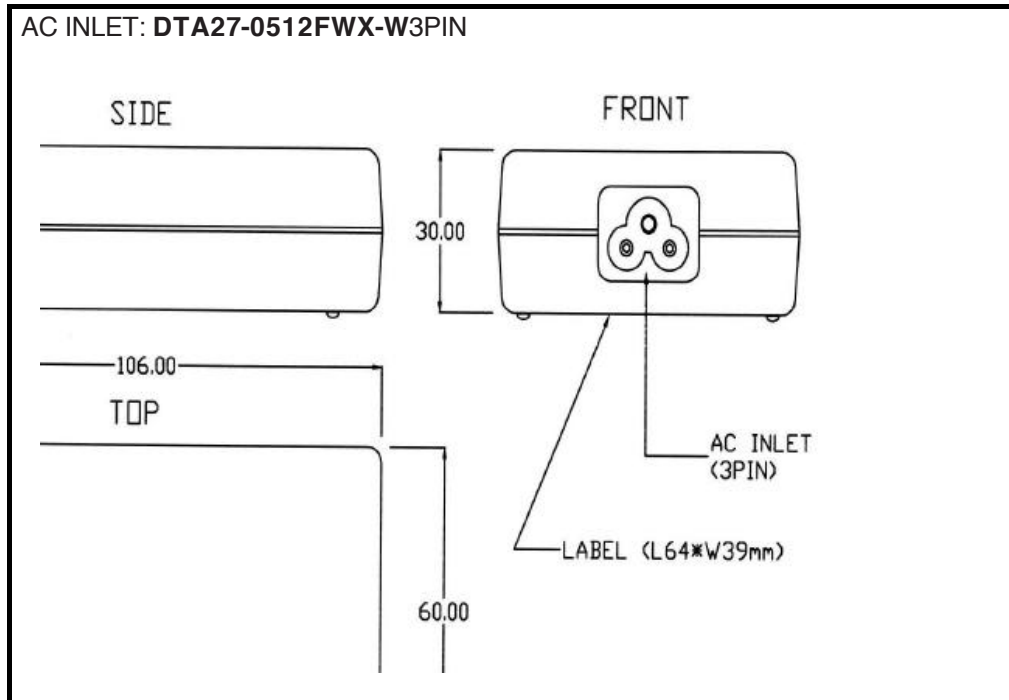
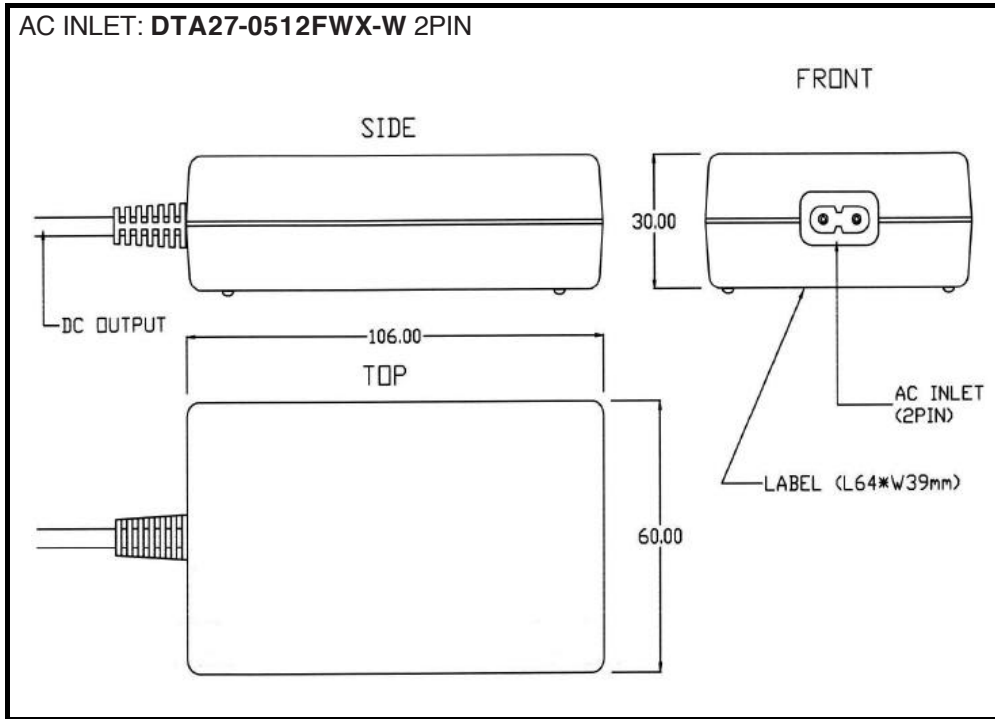




## Dimension Diagram (mm)

27W





## X-ON Electronics

Largest Supplier of Electrical and Electronic Components

*Click to view similar products for [Desktop AC Adapters](#) category:*

*Click to view products by [ETA](#) manufacturer:*

Other Similar products are found below :

[212A2136](#) [ADP485-01](#) [SWA-1202](#) [SWA-1501](#) [212A2220](#) [KR8-PS01](#) [1894875](#) [FWE050024B-10A](#) [820A4080G](#) [825A0057-03](#) [SWA-1704W](#) [AD5012N2LM-\(401\)](#) [TRH21A120-49E03-Level-VI](#) [FWE050012B-10A](#) [AC-DC ADAPTER 90W w/ Cable](#) [FWA065024A-11A](#) [PSA120U-560L6](#) [96PSA-A63W18V1-M](#) [1895235](#) [PW-C0725-W2-B](#) [57-U1](#) [57-U2](#) [SED80N2-16.0](#) [SED80N3-16.0](#) [RFQ43442-01](#) [YS50-1903150](#) [50966124050E](#) [PCM50UT04](#) [PCM50UT05](#) [CPSUNOTAKY-07056](#) [CPSUNOTAKY-07168](#) [CPSUNOTAKY-07169](#) [CPSUNOTAKY-07234](#) [CPSUNOTAKY-07236](#) [CPSUNOTAKY-07288](#) [CPSUNOTAKY-07312](#) [CPSUNOTAKY-07342](#) [CPSUNOTAKY-07387](#) [CPSUNOTAKY-07388](#) [TE30A0503F01](#) [TE30A4803F01](#) [TE40A2403F01](#) [TE40A2403N01](#) [ME30A1803N01](#) [ME30A4803F01](#) [ME40A1203N01](#) [ME40A2403N01](#) [MENT1150A2451F01](#) [125530040F](#) [1255300611](#)