



## DTC-SX-W6

## 80W



### FEATURES:

- High Reliability
- Meets CEC, CoC, EISA, RoHS, and DoE requirements
- Over voltage protection
- Short circuit protection
- Over load protection
- Meets UL, CSA, TUV, IEC60950-1 standards
- 100% burn-in test at max load under 35~45 centigrade
- Meets Energy Star level 6 requirements
- Power ON LED indicator



MODEL/CHANNEL		Unit	DTC80-09 SX-W6	DTC80-12 SX-W6	DTC80-15 SX-W6	DTC80-18 SX-W6
OUTPUT	Output Voltage	Vdc	9	12	15	18
	Output Regulation	A	8	6.67	5.34	4.45
MODEL/CHANNEL		Unit	DTC80-24 SX-W6	DTC80-28 SX-W6		DTC80-48 SX-W6
OUTPUT	Output Voltage	Vdc	24	28		48
	Output Regulation	A	3.34	2.86		1.67
	Ripple & Noise(max) *3	mS	<240mVpp			
	O/P Regulation	mA	±5%			
	Efficiency	%	>88% @ full load, 115VAC			
	Power	W	80			
	Power Factor	mS	>0.9(115VAC100%Load)			
	Hold Up Time	-	>20ms typical at full load @ 115VAC			
INPUT	Input Voltage	Vac	90-264VAC			
	Input Current	A	2.0A@ 90Vac max			
	Input Frequency	Hz	47-63Hz			
	Inrush Current Range	A	150A at 230VAC max at cold start			
Protection	Over current Protection	-	Auto Recover			
	Over Voltage Protection	-	LATCH AC Recycle after 110~130% of rated output			
	Short circuit protection	-	Auto Recover			
Dielectric Withstand	Primary-Secondary	-	4242VDC for 4 sec			
	Primary-Frame Ground	-	2121VDC for 4 sec			
Insulation Resistance	Primary-Secondary	-	20MOhm min 500VDC			
	Primary-Frame Ground	-	20MOhm min 500VDC			
Environmental Agencies	Safety	-	UL 60950-1 CSA 22.2-No.60950-1 TUV EN60950-1 CB IEC 60950-1			
	Line Conducted	-	EN55022 Class B, EN55024 Class B, FCC Class B			
	MTBF	-	>120,000 hours at full load and 25 °C ambient temperature			
Environment	Operating Temperature	-	0 to +60°C (derate linearly by 2.5% / °C from 41°C to 60°C)			
	Storage Humidity	-	10~90% RH non-condensing			
	Storage Temperature	-	-10 to +85°C			
	Cooling	-	0.05%/°C max			
Dimension	Size(WxHxD) / Weight	mm/g	L132.0xW69.0xH40.0mm			



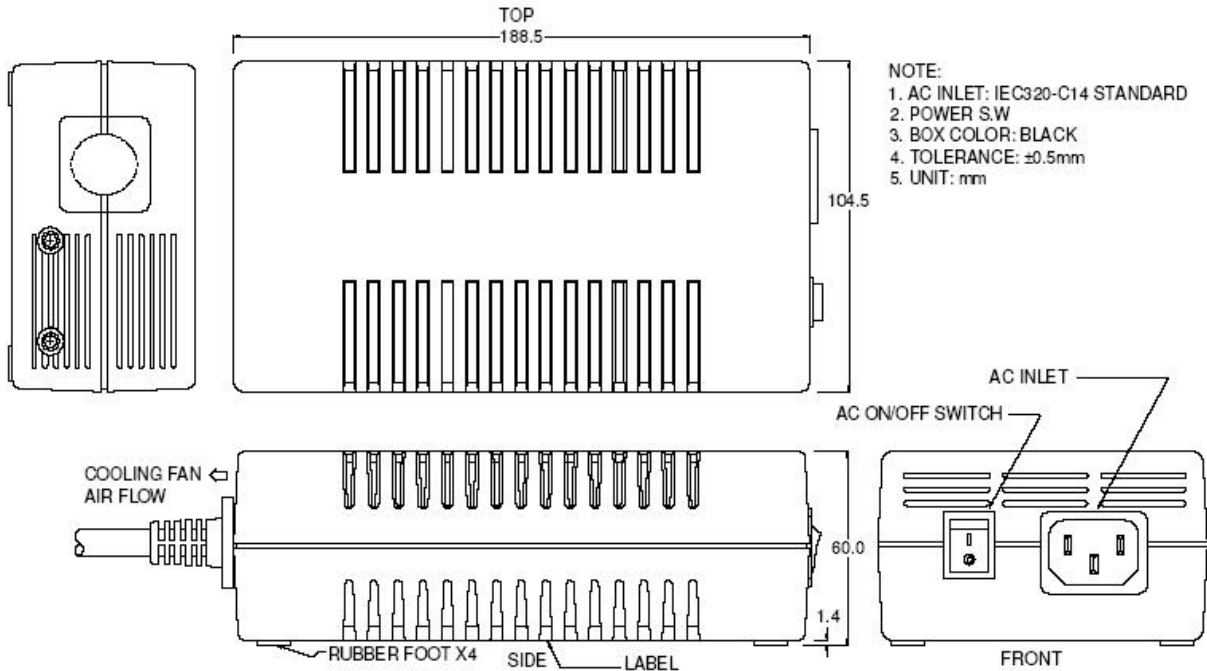
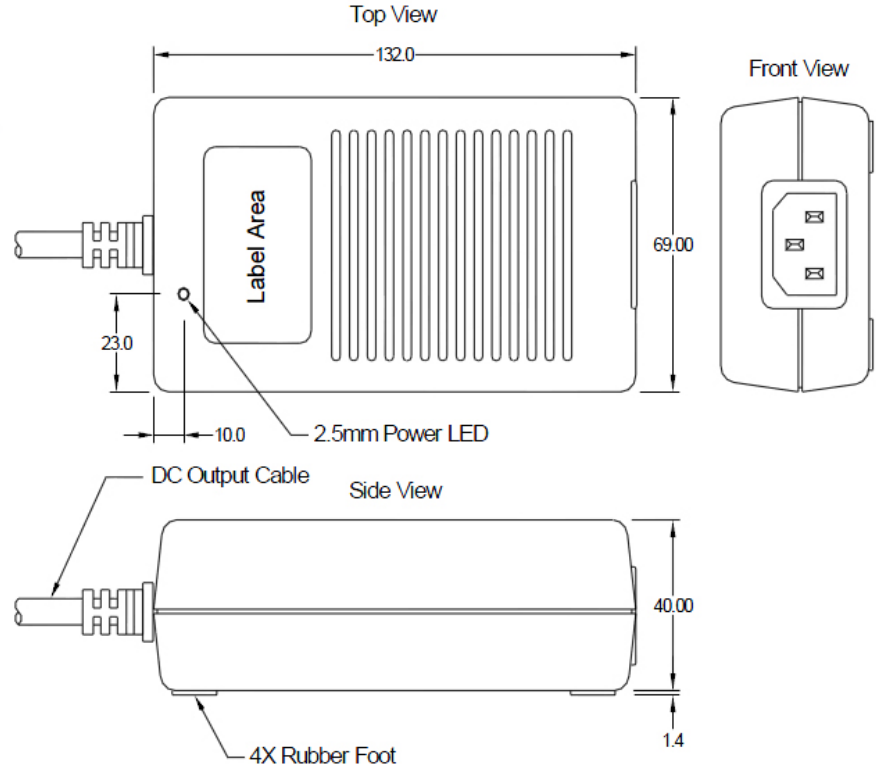


## MECHANICAL DIMENSIONS

80W

**Note :**

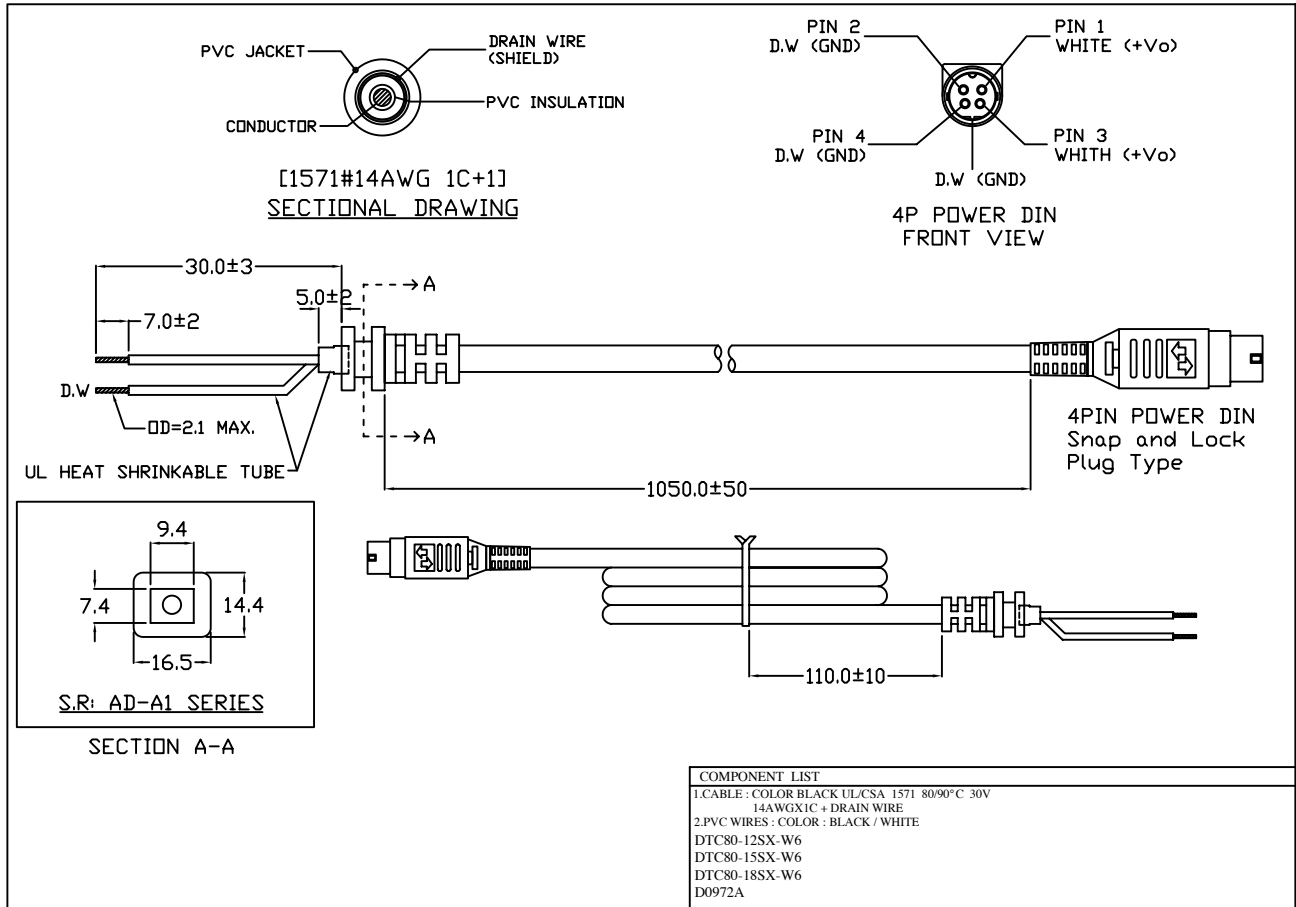
1. AC INLET : IEC320-C14 STANDARD
2. BOX COLOR : BLACK
3. TOLERANCE : +/-0.5mm
4. UNIT : mm





## MECHANICAL DIMENSIONS

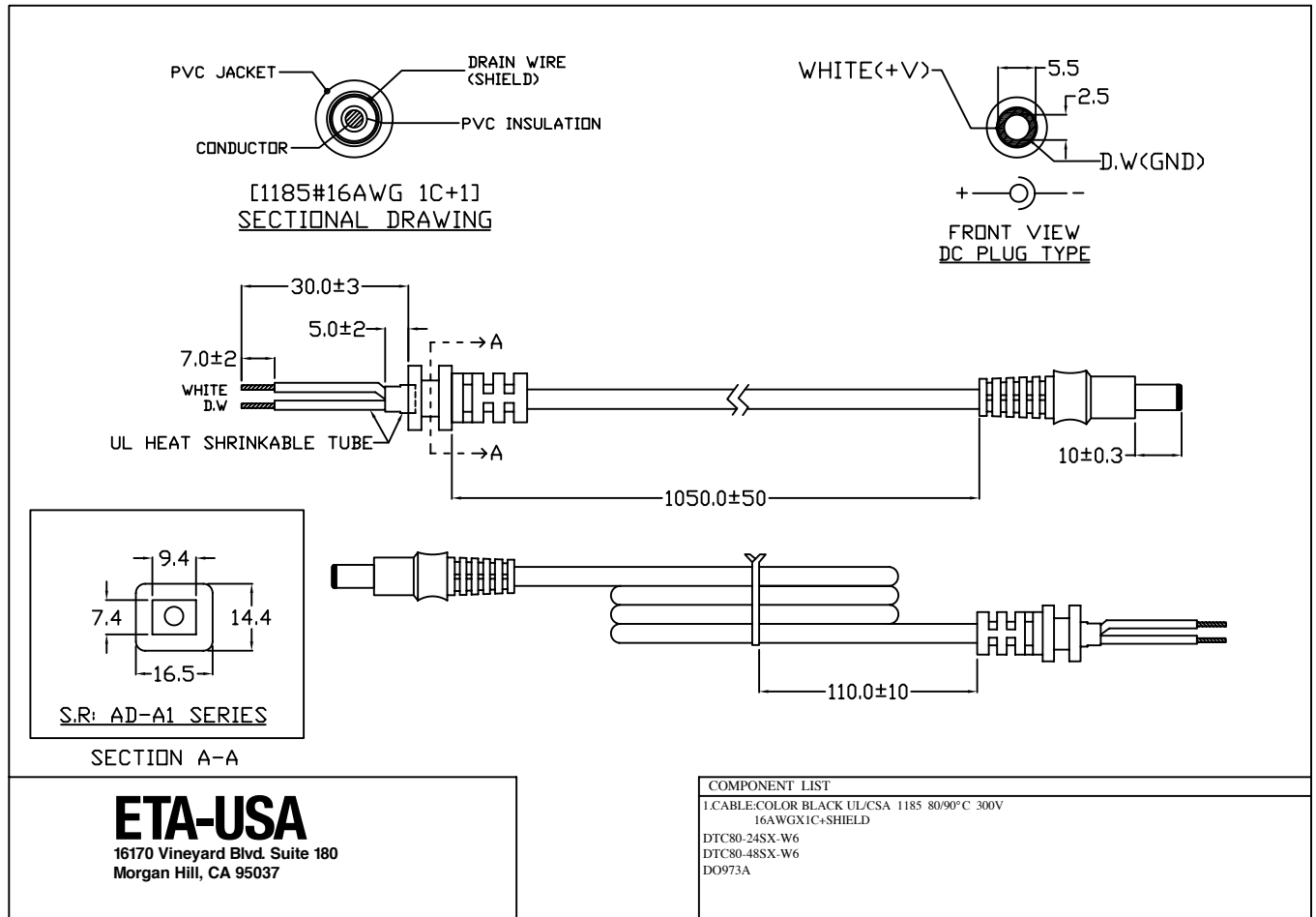
80W





## MECHANICAL DIMENSIONS

80W



### ETA-USA

16170 Vineyard Blvd. Suite 180  
Morgan Hill, CA 95037



## X-ON Electronics

Largest Supplier of Electrical and Electronic Components

*Click to view similar products for [Desktop AC Adapters](#) category:*

*Click to view products by [ETA](#) manufacturer:*

Other Similar products are found below :

[212A2136](#) [ADP485-01](#) [SWA-1202](#) [SWA-1501](#) [212A2220](#) [KR8-PS01](#) [1894875](#) [FWE050024B-10A](#) [820A4080G](#) [825A0057-03](#) [SWA-1704W](#) [AD5012N2LM-\(401\)](#) [TRH21A120-49E03-Level-VI](#) [FWE050012B-10A](#) [AC-DC ADAPTER 90W w/ Cable](#) [FWA065024A-11A](#) [PSA120U-560L6](#) [96PSA-A63W18V1-M](#) [1895235](#) [PW-C0725-W2-B](#) [57-U1](#) [57-U2](#) [SED80N2-16.0](#) [SED80N3-16.0](#) [RFQ43442-01](#) [YS50-1903150](#) [50966124050E](#) [PCM50UT04](#) [PCM50UT05](#) [CPSUNOTAKY-07056](#) [CPSUNOTAKY-07168](#) [CPSUNOTAKY-07169](#) [CPSUNOTAKY-07234](#) [CPSUNOTAKY-07236](#) [CPSUNOTAKY-07288](#) [CPSUNOTAKY-07312](#) [CPSUNOTAKY-07342](#) [CPSUNOTAKY-07387](#) [CPSUNOTAKY-07388](#) [TE30A0503F01](#) [TE30A4803F01](#) [TE40A2403F01](#) [TE40A2403N01](#) [ME30A1803N01](#) [ME30A4803F01](#) [ME40A1203N01](#) [ME40A2403N01](#) [MENT1150A2451F01](#) [125530040F](#) [1255300611](#)