



DTD120-SX-F-W6

120W External Power Supply



FEATURES

- 3-pole IEC320-C14 AC inlet, Class I
- Output voltage range from +12V to +48V
- Meet Efficiency Level VI & CoC V5 Tier 2 requirements
- No load Power consumption < 150mW
- Power ON LED indicator
- **3 year warranty**

Output voltage and constant current level can be adjusted through potential meter. Constant current level adjustable through output cable with 1~10Vdc.

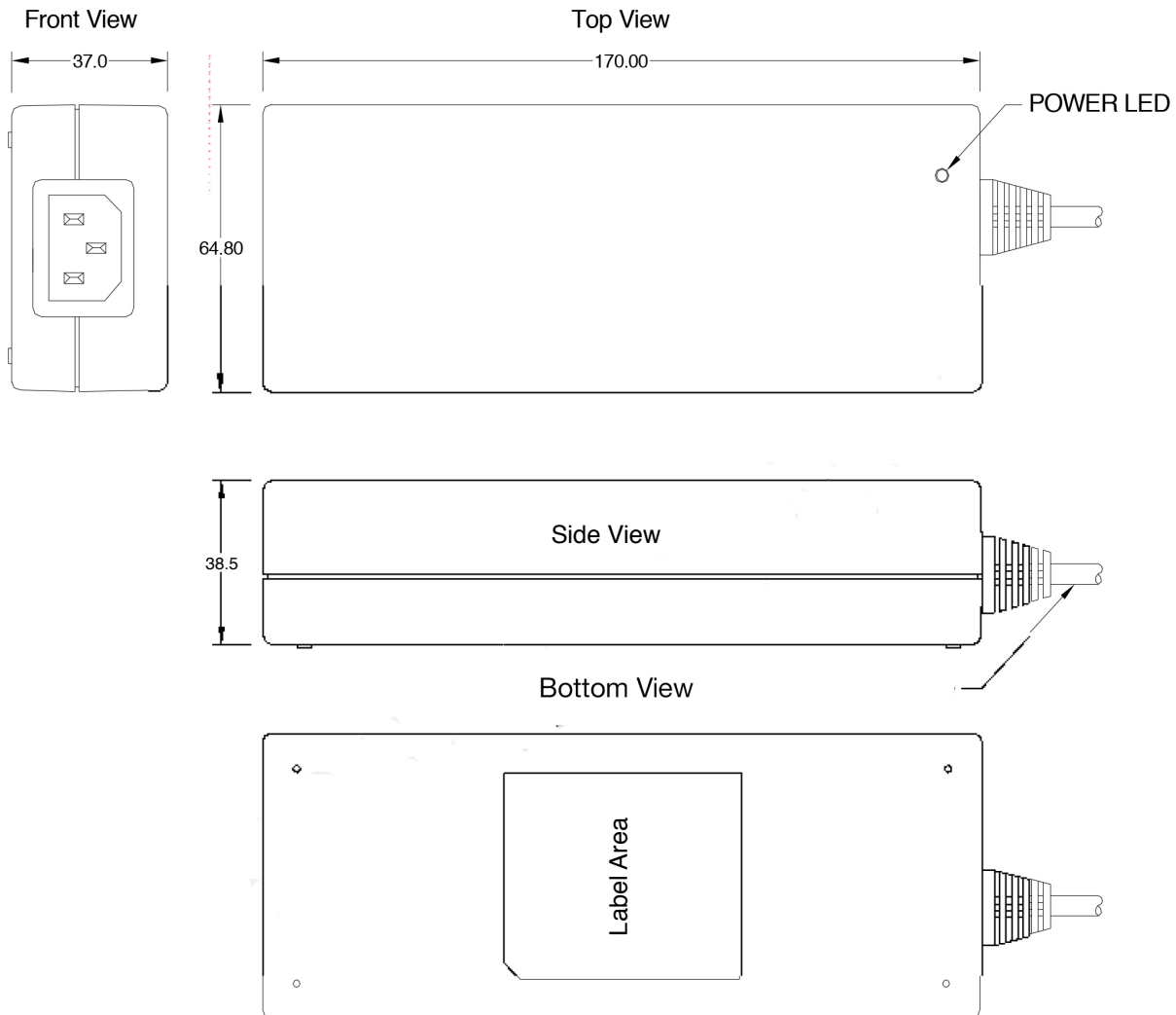


MODEL/CHANNEL		Unit	DTD120-12SX-F-W	DTD120-19SX-F-W	DTD120-24SX-F-W	DTD120-28SX-F-W	DTD120-48SX-F-W	
OUTPUT	Norminal Voltage	V	12	19	24	28	48	
	Norminal Current	A	8.33	6.3	5	4.3	2.5	
	Output Regulation	A	5	5	5	5	5	
	Output Power	W	100	120	120	120	120	
	Ripple & Noise Max	mV	240	240	240	240	240	
	Turn-on Time Typ.	ms	800 (AC IN 100V, Io=100%)					
INPUT	Input Voltage Range	V	90-264VAC					
	Frequency	A	47-63Hz					
	Input Current(rms)	%	2A @ 90Vac; 1A @ 264Vac max					
	Power factor	-	>0.9(20%~100%Load)					
	Efficiency	%	<89% @ full load, 115VAC					
	CEC	%	No load power consumption <0.3 W @240 VAC					
Protection	Short circuit protection	V	Auto Recovery					
	Over Voltage Protection	A	AC Recycle					
Environmental Agencies	Safety Standards	-	CISPR 22 Class B,FCC Part 15 Class B,EN 55022 Class B, EN 61000-3-2 Class D, EN 55024, CE					
	EMC Standards	-	UL 60950 CSA 22.2-No.60950-1 TUV EN60950-1 CB IEC 60950-1 PSE J60950 CCC					
Environment	Operating temp. & Humidity	-	0 to ±40°C					
	Storage temp. & Humidity	-	-10 to +70°C					
	MTBF demonstrated	-	>80'000 hours at full load and 25 °C ambient temperature					
Dimension	Size(LxWxH) / Weight	mm/g	L170xW64.8xH37mm					





MECHANICAL SPECIFICATION AC/DC Switching Adapter - Single Output



Note:

1. AC Inlet : IEC320-C14
2. Plastic Case Color : Black
3. Tolerance : $\pm 0.5\text{mm}$
4. Unit : mm

STANDARD OUTPUT CABLE

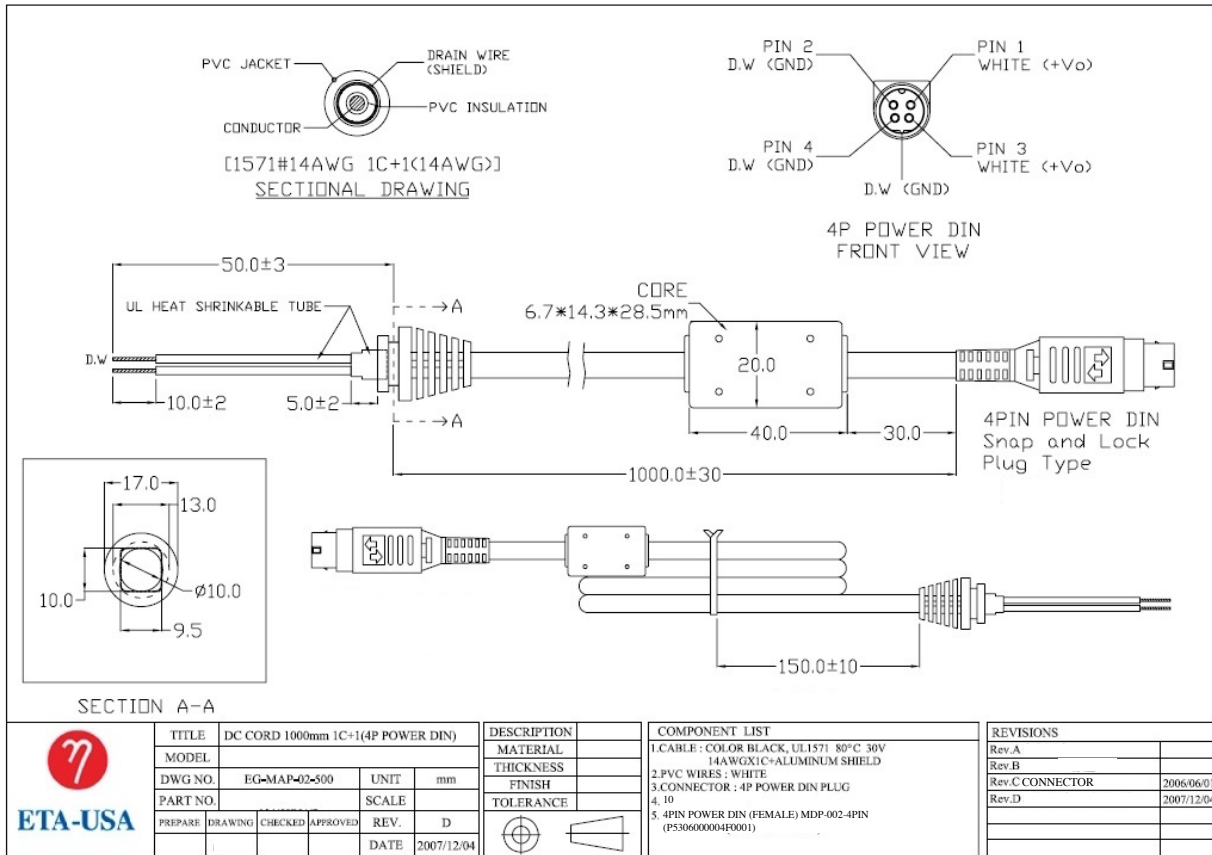
1. AWM 1571 # 14 AWG / 1C + SHIELDING, UL 80°C 30V VW-1, 1050 mm.
2. AWM 1185 # 16 AWG / 1C + SHIELDING, UL 80°C 300V VW-1, 1050 mm.
3. Depends on customers requirements.





DTD-SX-F-W6- Drawings

120W



EG-B2C010 REV.B



X-ON Electronics

Largest Supplier of Electrical and Electronic Components

Click to view similar products for [Desktop AC Adapters](#) category:

Click to view products by [ETA](#) manufacturer:

Other Similar products are found below :

[212A2136](#) [ADP485-01](#) [SWA-1202](#) [SWA-1501](#) [212A2220](#) [KR8-PS01](#) [1894875](#) [FWE050024B-10A](#) [820A4080G](#) [825A0057-03](#) [SWA-1704W](#) [AD5012N2LM-\(401\)](#) [TRH21A120-49E03-Level-VI](#) [FWE050012B-10A](#) [AC-DC ADAPTER 90W w/ Cable](#) [FWA065024A-11A](#) [PSA120U-560L6](#) [96PSA-A63W18V1-M](#) [1895235](#) [PW-C0725-W2-B](#) [57-U1](#) [57-U2](#) [SED80N2-16.0](#) [SED80N3-16.0](#) [RFQ43442-01](#) [YS50-1903150](#) [50966124050E](#) [PCM50UT04](#) [PCM50UT05](#) [CPSUNOTAKY-07056](#) [CPSUNOTAKY-07168](#) [CPSUNOTAKY-07169](#) [CPSUNOTAKY-07234](#) [CPSUNOTAKY-07236](#) [CPSUNOTAKY-07288](#) [CPSUNOTAKY-07312](#) [CPSUNOTAKY-07342](#) [CPSUNOTAKY-07387](#) [CPSUNOTAKY-07388](#) [TE30A0503F01](#) [TE30A4803F01](#) [TE40A2403F01](#) [TE40A2403N01](#) [ME30A1803N01](#) [ME30A4803F01](#) [ME40A1203N01](#) [ME40A2403N01](#) [MENT1150A2451F01](#) [125530040F](#) [1255300611](#)