



# ETA-USA

The Power Professionals

DTE150-03X-F-W

150W

Triple Output



Optional +5VSB @2A with 5%  
O/P regulation and 50mV ripple

- With Active PFC
- Universal Input
- AC Input: IEC 320-C14 Inlet
- Two year warranty
- High reliability
- 100% burn-in tested
- 40mm cooling fan with speed control
- 100% hi-pot tested
- Short-circuit, over load, over voltage protection

MODEL/CHANNEL		Unit	DTE150-03X-F-W		
<b>Output Rating</b>	Vo	Vo	+5Vdc	+12Vdc	-12Vdc
	Io (min)	A	1.5A	2A	0.15A
	Io (max)	A	15A	8A	1.5A
	Ripple & Noise	mV	50mV	120mV	120mV
	O/P Regulation	%		5%	
	Po (Max.)	-		150	
<b>INPUT</b>	Input Voltage Range	V	90 - 264VAC		
	Range	Hz	47-63Hz		
	Power Factor	VAC	>0.9 (20%~100% Load)		
	Efficiency	%	>80% @ full load, 115VAC		
	Ripple & Noise	%	1%		
<b>Efficiency</b>	Input range	VAC	90-264VAC		
	Frequency	Hz	47 - 63Hz		
	Power Factor	VAC	> 0.95 @115VAC; > 0.90 @230VAC @full load		
	Inrush current	VAC	< 75A peak @115VAC; < 150A peak @230VAC cold start @25°C		
	Input current (rms)	VAC	2.5A @90VAC; 1.25A @264VAC max.		
	Maximum output power (Po)	W	150Watts		
	Over Voltage Protection	-	Shutdown and latch off, AC recycle		
	Hold-up time	VAC	> 16ms typical @full load, 115VAC		
<b>Environmental Specification</b>	Operating Temperature	°C	0 to +50°C		
	Storage Temperature	°C	-10 to +70°C		
	Humidity	%	20~90%		
	MTBF demonstrated	-	>100,000 hours at full load and 25°C ambient temperature		
<b>Environmental Agencies</b>	Safety Standards	-	UL 60950-1 CSA 22.2-No.60950-1 TUV EN60950-1 CB IEC 60950-1		
	EMI Standards (Meet)	-	FCC Class B CISPR 22 Class B EN 55022 Class B CE		
<b>Protection</b>	Over Voltage Protection	-	Auto-recover		
	Over Load Protection	-	Auto-recover		
	Short circuit protection	-	Auto-recover		
Dimension/*Weight	mm/g	L188.5xW104.5xH60mm			

Note: 1. Peak-to-peak with 20MHz bandwidth with a tantalum 10uF  
Hold-up time >10ms typical at full load @ 115VAC



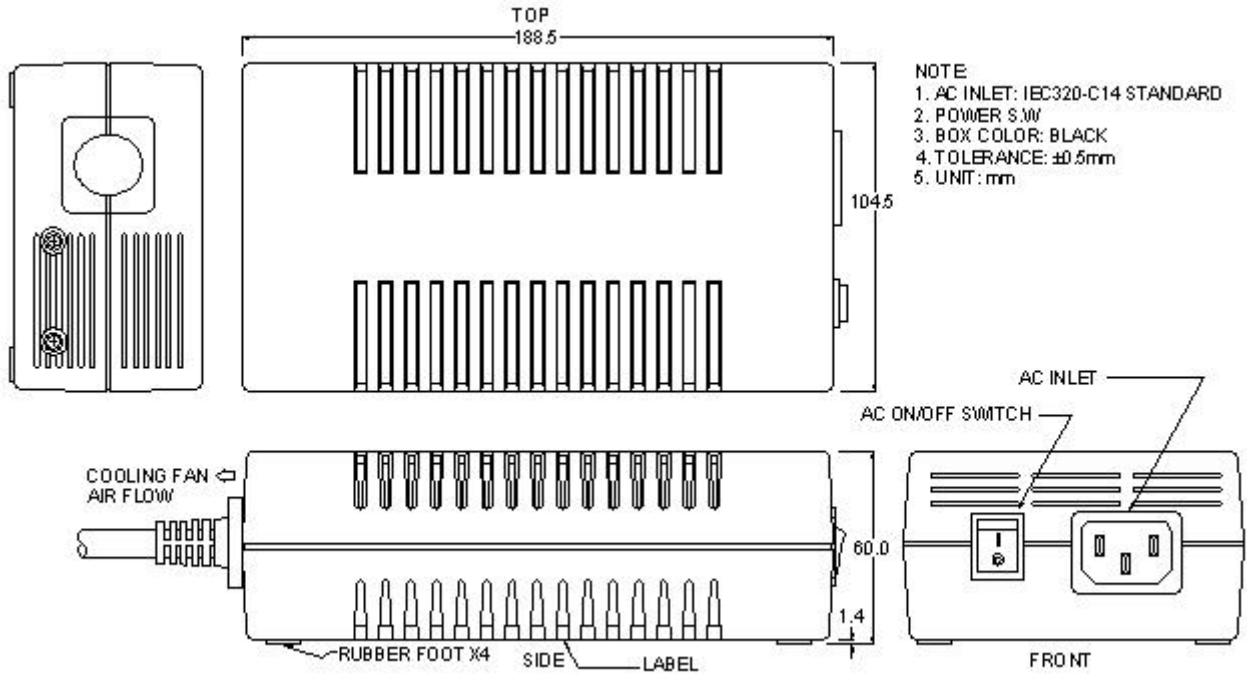
# ETA-USA

16170 Vineyard Blvd. Suite 180 Morgan Hill, CA 95037 <http://www.eta-usa.com>  
Toll-free (US only): 800-ETA-POWR (800-382-7697) Telephone: 408 778-2793 FAX: 408-779-2753



## Dimensions Diagrams

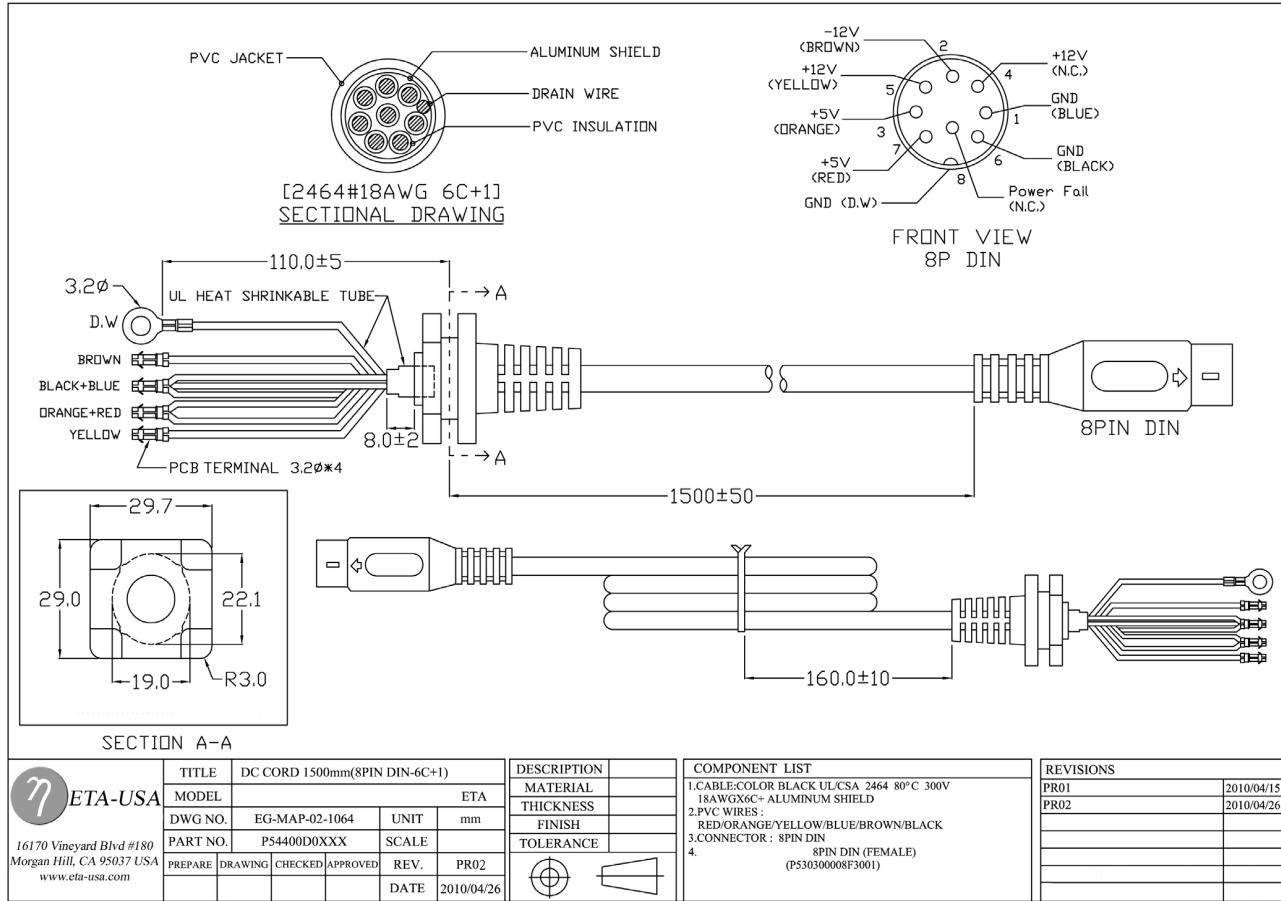
## 150W





## Dimensions Diagrams

## 150W



EG-B2C010 REV.B



## X-ON Electronics

Largest Supplier of Electrical and Electronic Components

*Click to view similar products for [Desktop AC Adapters](#) category:*

*Click to view products by [ETA](#) manufacturer:*

Other Similar products are found below :

[212A2136](#) [ADP485-01](#) [SWA-1202](#) [SWA-1501](#) [212A2220](#) [KR8-PS01](#) [1894875](#) [FWE050024B-10A](#) [820A4080G](#) [825A0057-03](#) [SWA-1704W](#) [AD5012N2LM-\(401\)](#) [TRH21A120-49E03-Level-VI](#) [FWE050012B-10A](#) [AC-DC ADAPTER 90W w/ Cable](#) [FWA065024A-11A](#) [PSA120U-560L6](#) [96PSA-A63W18V1-M](#) [1895235](#) [PW-C0725-W2-B](#) [57-U1](#) [57-U2](#) [SED80N2-16.0](#) [SED80N3-16.0](#) [RFQ43442-01](#) [YS50-1903150](#) [50966124050E](#) [PCM50UT04](#) [PCM50UT05](#) [CPSUNOTAKY-07056](#) [CPSUNOTAKY-07168](#) [CPSUNOTAKY-07169](#) [CPSUNOTAKY-07234](#) [CPSUNOTAKY-07236](#) [CPSUNOTAKY-07288](#) [CPSUNOTAKY-07312](#) [CPSUNOTAKY-07342](#) [CPSUNOTAKY-07387](#) [CPSUNOTAKY-07388](#) [TE30A0503F01](#) [TE30A4803F01](#) [TE40A2403F01](#) [TE40A2403N01](#) [ME30A1803N01](#) [ME30A4803F01](#) [ME40A1203N01](#) [ME40A2403N01](#) [MENT1150A2451F01](#) [125530040F](#) [1255300611](#)