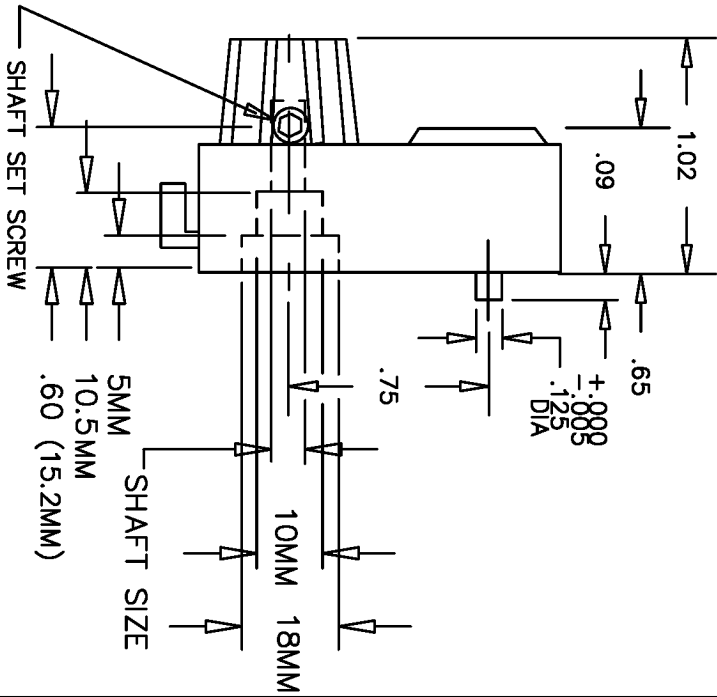
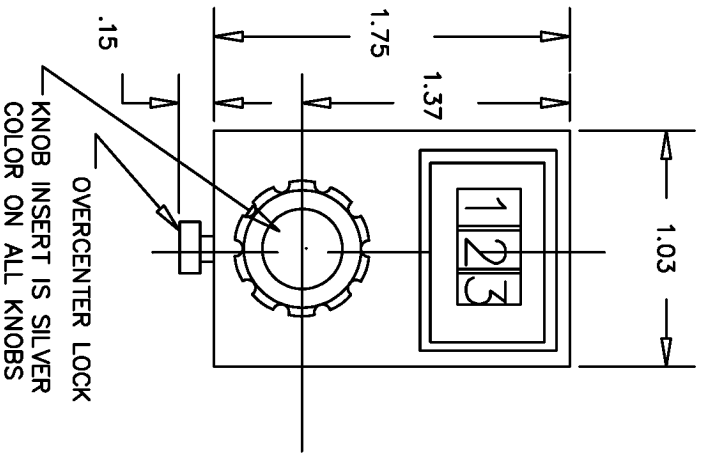
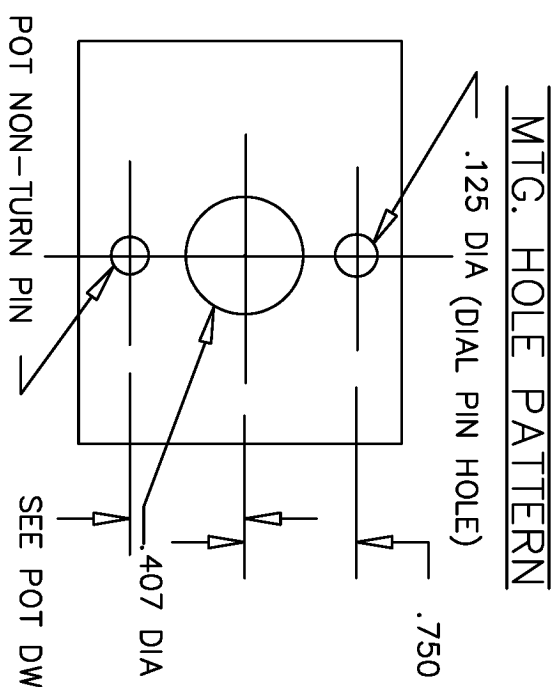


# SPECIFICATIONS

NO OF TURNS.....10  
 NO OF COUNTS.....THE UNIT DISPLAYS  
 A TOTAL COUNT FROM  
 000 TO 999, AS KNOB  
 IS ROTATED CLOCKWISE

WEIGHT.....1.5 APPROX.  
 ACCURACY.....0.2% OF FULL RANGE  
**MOUNTING PROCEDURE**

1. TURN POTENTIOMETER FULL CCW.
2. PLACE DIAL ON PANEL.
3. TURN DIAL TO READ 000.
4. TIGHTEN SET SCREW.



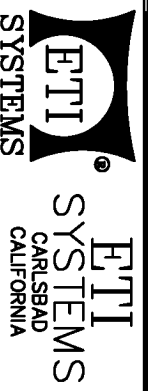
SEE PAGE 2 FOR COLOR AND SHAFT SIZES

PAGE 1

THIS DOCUMENT CONTAINS PROPRIETARY DATA OF POLARIS INDUSTRIAL ENTERPRISES, INC. NO DISCLOSURE, REPRODUCTION, OR USE OF ANY PART THERE OF MAY BE MADE EXCEPT BY WRITTEN PERMISSION.

REV.	BY	DATE	P/N
E	AT	8/13/04	ADDED IVORY AND 6 mm SHAFT SIZE

SCALE	DATE: 1-23-86
NONE	BY BT
APP'R'D	
CODE IDENT: 19477	



TITLE  
 DIGITAL TURNS  
 COUNTING DIAL

PART NO.  
 DB10-1

TOLERANCES  
 XX = +/- .010" FRACT. = +/- 1/64"  
 XXX = +/- .005" ANGLES = +/- 1/2"  
 ALL SPECIFICATIONS SUBJECT TO CHANGE WITHOUT NOTICE.

THIS DOCUMENT CONTAINS PROPRIETARY DATA OF POLARIS INDUSTRIAL ENTERPRISES, INC. NO DISCLOSURE, REPRODUCTION, OR USE OF ANY PART THERE OF MAY BE MADE EXCEPT BY WRITTEN PERMISSION.

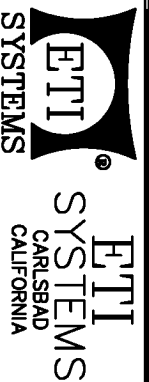
REV. BY DATE P/N  
 E AT 8/13/04 ADDED IVORY AND 6 mm SHAFT SIZE  
 DB10-2

PART NO.	SHAFT SIZE	COLOR	LOCK	NUMBER COLOR	FLEXIBLE COUPLING
DB10SN-3/16	3/16	SILVER	NO		
DB10SL-3/16	3/16	SILVER	YES		
DB10SN-1/8	1/8	SILVER	NO		
DB10SL-1/8	1/8	SILVER	YES	BLACK WITH WHITE BACKGROUND	NO
DB10SN-1/4	1/4	SILVER	NO		
DB10SL-1/4	1/4	SILVER	YES		
DB10SN-6	6mm	SILVER	NO		
DB10SL-6	6mm	SILVER	YES		
DB10BN-3/16	3/16	BLACK	NO		
DB10BL-3/16	3/16	BLACK	YES		
DB10BN-1/8	1/8	BLACK	NO		
DB10BL-1/8	1/8	BLACK	YES		
DB10BN-1/4	1/4	BLACK	NO		
DB10BL-1/4	1/4	BLACK	YES	WHITE WITH BLACK BACKGROUND	NO
DB10BN-6	6mm	BLACK	NO		
DB10BL-6	6mm	BLACK	YES		
DB10GN-3/16	3/16	GRAY	NO		
DB10GL-3/16	3/16	GRAY	YES		
DB10GN-1/8	1/8	GRAY	NO		
DB10GL-1/8	1/8	GRAY	YES	BLACK WITH WHITE BACKGROUND	NO
DB10GN-1/4	1/4	GRAY	NO		
DB10GL-1/4	1/4	GRAY	YES		
DB10GN-6	6MM	GRAY	NO		
DB10GL-6	6MM	GRAY	YES		
DB10IN-3/16	3/16	IVORY	NO		
DB10IL-3/16	3/16	IVORY	YES		
DB10IN-1/8	1/8	IVORY	NO		
DB10IL-1/8	1/8	IVORY	YES	BLACK WITH WHITE BACKGROUND	NO
DB10IN-1/4	1/4	IVORY	NO		
DB10IL-1/4	1/4	IVORY	YES		
DB10IN-6	6MM	IVORY	NO		
DB10IL-6	6MM	IVORY	YES		

PAGE 2

TOLERANCES  
 XX = +/- .010" FRACT. = +/- 1/64"  
 XXX = +/- .005" ANGLES = +/- 1/2"  
 ALL SPECIFICATIONS SUBJECT TO CHANGE WITHOUT NOTICE.

SCALE: NONE  
 DATE: 1-23-86  
 BY: BT  
 APPR'D:  
 CODE IDENT: 19477



TITLE: DIGITAL TURNS COUNTING DIAL

PART NO. DB10-2

## X-ON Electronics

Largest Supplier of Electrical and Electronic Components

*Click to view similar products for [Knobs & Dials](#) category:*

*Click to view products by [ETI Systems](#) manufacturer:*

Other Similar products are found below :

[8519](#) [8529](#) [8547](#) [8573](#) [11K5015-EMNB](#) [11K5019-ECNB](#) [11K5020-KLAB](#) [11K5048-KMNB](#) [11K5014-EMNB](#) [11K5015-EMNG](#) [11K5019-EMNB](#) [1770](#) [P400S-08-D6-N](#) [K6510](#) [PKJ50B18](#) [42000B38](#) [420114B14](#) [5006](#) [KS700B14](#) [411](#) [420037B14](#) [8517](#) [8545](#) [8546](#) [8572](#) [H-516-3A](#) [P861H-0X-S6](#) [8544](#) [11K5014-JMNG](#) [11K5014-KMNG](#) [11K5014-ECNG](#) [5700E](#) [5002-5](#) [52-928.40](#) [5003-5](#) [11K5019-KCNG](#) [11K5028-KCNG](#) [02000-11A-2](#) [02000-4-1](#) [0025DF](#) [G813512LADUS-0](#) [2810-Y](#) [3009CC](#) [3025BA](#) [YME IP 12 D](#) [YME IP 01 A](#) [YME IP 12 H](#) [YME IP 12L-U](#) [YME IP 16 I](#) [YME IP 01 B](#)