

SPECIFICATIONS

ELECTRICAL

CURRENT CONSUMPTION----- APPROX. 7mA
 APPLIED VOLTAGE----- 5V DC±10%
 LINEARITY (INDEPENDENT)----- ±3.0%
 LOAD RESISTANCE----- 10K OHM MIN.
 LEVER ELECTRICAL ANGLE----- 30° MAX.
 RESOLUTION----- ESSENTIALLY INFINITE
 OUTPUT TEMP. CHARACTERISTIC----- BELOW ±2.5% V(OUT)
 INSULATION RESISTANCE----- OVER 100 MEGA OHMS @ 250VDC.
 DIELECTRIC STRENGTH----- 1 MINUTE AT 250 VAC
 DRIFT AT CENTER POSITION----- BELOW ±0.9% V(OUT)
 EMC IMMUNITY----- 50V/m (80MHz-1GHz SINE WAVE)

MECHANICAL

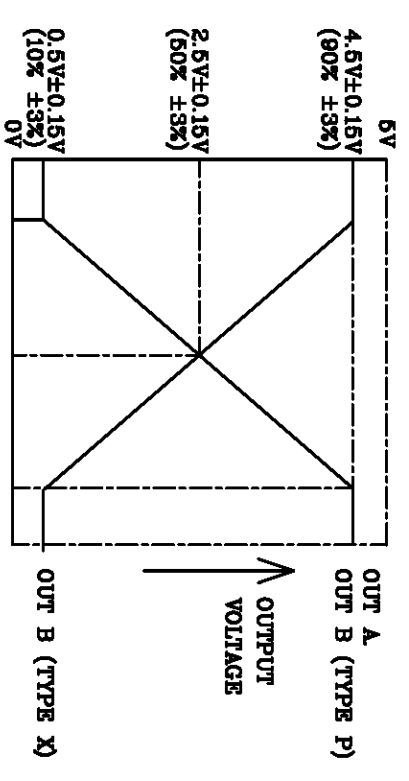
RANGE OF OPERATING LEVER----- ±15° ~ ±19° FROM CENTER
 OPERATING FORCE----- APPROX. 3.59 ~ 8.99 OZ.FORCE
 OPERATING TEMPERATURE----- -20°C TO +60°C
 LIFE EXPECTANCY----- 5 MILLION OPERATIONS
 SHOCK----- 30G
 VIBRATION----- 10- 55 Hz 98m/S*S (10G)

MATERIALS

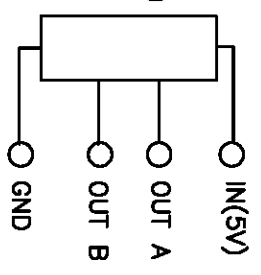
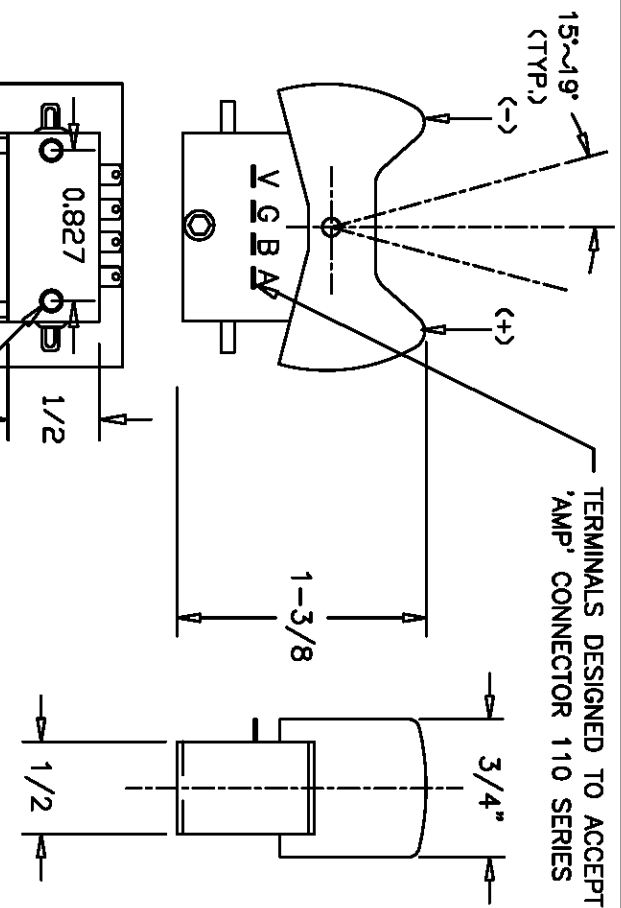
HOUSING----- HIGH TEMP. THERMO PLASTIC
 INGRESS PROTECTION----- IP65

OUTPUT TYPE

TYPE S : SINGLE OUTPUT TERMINAL A (TERMINAL B IS NC)
 TYPE X: DUAL OUTPUT, CROSS
 TYPE P: DUAL OUTPUT, PARALLEL

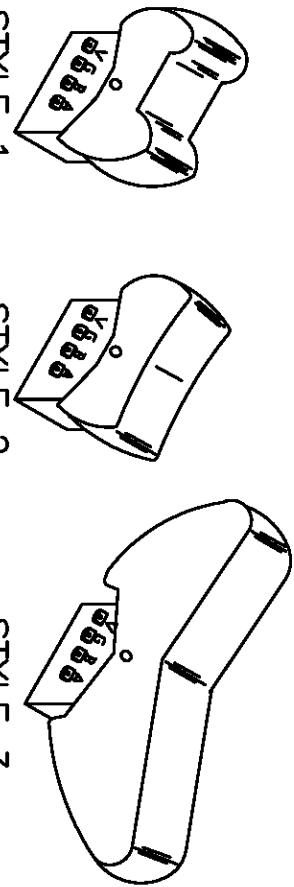


REV.	BY	DATE	P/N
			J3RH



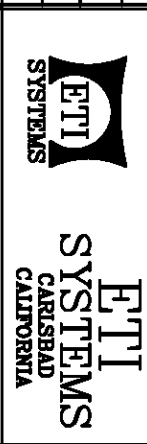
NOMENCLATURE

J3RH - X 1
 ROCKER ARM STYLE(1,2 OR 3)
 OUTPUT TYPE(S,X OR P)
 JOYSTICK SERIES



TOLERANCES
 XX = +/- .010" FRACT. = +/- 1/64"
 XXX = +/- .005" ANGLES = +/- 1/2°
 ALL SPECIFICATIONS SUBJECT TO CHANGE WITHOUT NOTICE.

SCALE	DATE	3-24-05
BY	APPRVD.	AT
CODE	IDENT.	19477



TITLE
 HALL EFFECT
 ROCKER POT

PART NO.
 J3RH

X-ON Electronics

Largest Supplier of Electrical and Electronic Components

Click to view similar products for [Joysticks](#) category:

Click to view products by [ETI Systems](#) manufacturer:

Other Similar products are found below :

[M11L0A1](#) [C10O0C1P](#) [S10L0A1M](#) [G3-A1AM151NNNN](#) [TH500P00D4](#) [C10O0C1PMJ0](#) [S10L061J](#) [60C22-M7-4-020S](#) [60A00-8-050C](#)
[60A00-4-050C](#) [60C22-M7-4-040S](#) [G3-0425](#) [S30L081F50](#) [3440SAT6476](#) [60A18-4-090C](#) [S30L081J](#) [M11L001C](#) [M11L0X1P](#)
[USBM31Q081RMJ4S](#) [USBC20O051JMJS](#) [TW08BLK12](#) [S30L0M1CSJBLK](#) [HF11R11](#) [HG-44MIS000-2654](#) [HG-44MIS000-U-2655](#)
[4P182F1E55475](#) [TS4A1S00A](#) [BD140D01GR0000](#) [BD150SD4BL1200](#) [3140SAL6475](#) [TW01BLK11](#) [TW01GRY1](#) [ZD4PA203](#)
[HF44S10UMJ0](#) [TS3N2S00A](#) [TS1R1U00A](#) [TS1R1S09A](#) [TS1D2S00A](#) [HFX45S02](#) [HFX10S00](#) [HF11P11](#) [4R28-2S1E-55-00](#)
[BD150A01RE0000](#) [BD150D02BK1200](#) [ZD4PA24](#) [ZD4PA22](#) [ZD4PA12](#) [ZD4PA14](#) [J1-00105-S-G](#) [J3R-IT-10K](#)