

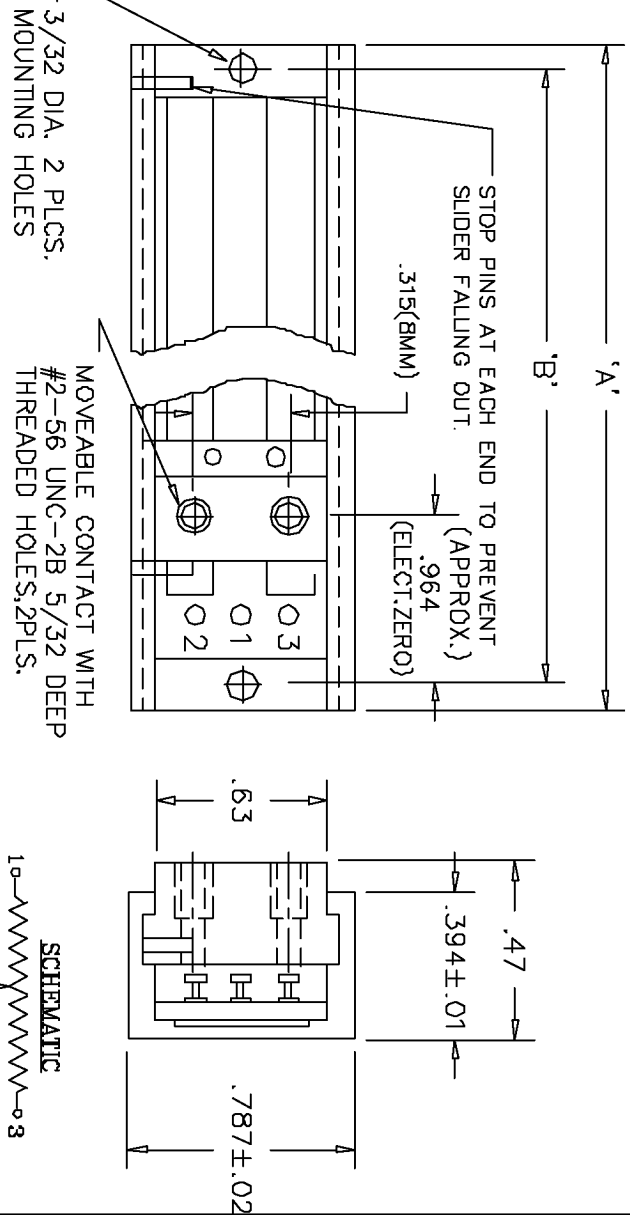
SPECIFICATIONS

ELECTRICAL
 RESISTANCE RANGE --- SEE TABLE
 RESISTANCE TOLERANCE --- ±20%
 OUTPUT SMOOTHNESS --- BELOW 0.1% OF INPUT VOLTS
 CONTACT RESIS. VARIATION --- BELOW 2%
 INSULATION RESISTANCE --- 1000 MEGOHMS @ 500VDC
 DIELECTRIC STRENGTH --- 1 MINUTE AT 500 VAC
 RESOLUTION --- ESSENTIALLY INFINITE

MECHANICAL
 ROTATIONAL LIFE --- 10,000,000 STROKES

ENVIRONMENTAL
 OPERATING TEMPERATURE --- -30°C TO +105°C
 TEMPERATURE COEFFICIENT --- ±400 PPM/°C
 VIBRATION --- 10HZ TO 2000HZ 15G
 SHOCK --- 50G 11MS
 MOISTURE RESISTANCE --- 40°C 95%RH 120 HOURS

MATERIALS
 HOUSING --- ALUMINUM
 TERMINALS --- GOLD PLATED, BRASS
 RESISTANCE ELEMENT --- CONDUCTIVE PLASTIC



| MODEL NO. | LCPL115 | LCPL153 | LCPL200 | LCPL275 | LCPL300 | LCPL400 | LCPL458 | LCPL500 | LCPL533 | LCPL610 | LCPL1000 | LCPL1220 |
|-----------------------------|------------------|--------------|----------------|------------------|------------------|------------------------|------------------------|-----------------------------|-----------------------------|-----------------------------|-------------------------------|-------------------------------|
| ELECTRICAL STROKE | 4.52 ±.04 | 6.50±.04 | 7.874 ±.04 | 10.826 ±.04 | 11.811 ±.04 | 13.748 ±.04 | 18.000±.04 | 19.685 ±.04 | 21.000 ±.04 | 24.090±.04 | 39.370 ±.04 | 48.000 ±.04 |
| MECHANICAL STROKE (APPROX.) | 4.646 ±.04 | 6.126 ±.04 | 8.000 ±.04 | 10.952 ±.04 | 11.929 ±.04 | 13.865 ±.04 | 18.118±.04 | 19.803 ±.04 | 21.197 ±.04 | 24.197±0.4 | 39.567 ±.04 | 48.197 ±.04 |
| STANDARD RESISTANCE VALUES | 1K,2K,5K,10K | 1K,2K,5K,10K | 2K,5K,10K | 2K,5K,10K | 5K,10K,20K | 5K,10K,20K 50K,100K | 5K,10K,20K 50K,100K | 5K,10K,20K 50K,100K,200K | 5K,10K,20K 50K,100K,200K | 5K,10K,20K 50K,100K,200K | 10K,20K,50K 100K,200K,500K | 10K,20K,50K 100K,200K,500K |
| LINEARITY (INDEPENDENT) | ±0.5% | ±0.5% | ±0.5% | ±0.5% | ±0.5% | ±0.5% | ±0.5% | ±0.5% | ±0.5% | ±0.5% | ±0.5% | ±0.5% |
| POWER RATING | 1 WATTS | 1 WATTS | 2 WATTS | 2 WATTS | 2.5 WATTS | 3 WATTS | 3 WATTS | 4 WATTS | 4 WATTS | 4 WATTS | 6 WATTS | 6 WATTS |
| DIMENSION | A ±.04 B ±.02 | 6.49 7.60 | 9.843 9.450 | 12.796 12.403 | 13.780 13.386 | 17.716 17.323 | 19.869 19.575 | 21.654 21.260 | 22.969 22.575 | 25.869 25.675 | 41.338 40.944 | 50.166 49.772 |

TOLERANCES
 XX = +/- .010" FRACT. = +/- 1/64"
 XXX = +/- .005" ANGLES = +/- 1/2°
 ALL SPECIFICATIONS SUBJECT TO CHANGE WITHOUT NOTICE.

| | | |
|-------|---------|----|
| SCALE | DATE: | BY |
| NONE | 8-10-86 | BT |

CODE IDENT: 19477

TITLE
 OPEN FRAME
 LINEAR MOTION
 POTENTIOMETER

PART NO.
 LCPL

X-ON Electronics

Largest Supplier of Electrical and Electronic Components

Click to view similar products for [Ceramic Composition Resistors](#) category:

Click to view products by [ETI Systems](#) manufacturer:

Other Similar products are found below :

[47250](#) [CCR21K0KT](#) [RC1R0EA1K00KE](#) [109AS502KDS](#) [250AS280JDS](#) [109AS333KDS](#) [890SP501K](#) [890AS682LDS](#) [1044AS301KDS](#)
[1038AS302JN](#) [HPC1C394K](#) [DFN51120](#) [PCF2CT631R121K](#) [PCF2C561K](#) [PCF1CT631R221K](#) [PCF1C221K](#) [PCF1/2C683K](#) [PCF1/2C471K](#)
[PCF1/2C151K](#) [PCF1/2C100K](#) [HPC1C681K](#) [HPC1/2C332K](#) [HPC1/2C471K](#) [HPC1/2CT52A102K](#) [HPC1C103K](#) [HPC1C121K](#) [HPC1C123K](#)
[HPC1C153K](#) [HPC1C183K](#) [HPC1C220K](#) [HPC1C221K](#) [HPC1C223K](#) [HPC1C224K](#) [HPC1C272K](#) [HPC1C331K](#) [HPC1C332K](#) [HPC1C390K](#)
[HPC1C470K](#) [HPC1C471K](#) [HPC1C561K](#) [HPC1C680K](#) [HPC1C820K](#) [HPC2C100K](#) [HPC2C101K](#) [HPC2C103K](#) [HPC2C105K](#) [HPC2C121K](#)
[HPC2C151K](#) [HPC2C182K](#) [HPC2C123K](#)