

THIS DOCUMENT CONTAINS PROPRIETARY DATA OF POLARIS INDUSTRIAL ENTERPRISES, INC. NO DISCLOSURE, REPRODUCTION, OR USE OF ANY PART THEREOF MAY BE MADE EXCEPT BY WRITTEN PERMISSION.

REV.	BY	DATE	APPRVD.
G	AT	12-11-01	

P/N
ADDED MOUNTING PLATE

SP22G

SPECIFICATIONS

ELECTRICAL

RESISTANCE RANGE-----500,1K,2K,5K,10K,20K,50K,100K
 RESISTANCE TOLERANCE-----±10%
 LINEARITY INDEPENDENT-----±1.0%
 POWER RATING-----1.0 WATTS
 ELECTRICAL ANGLE-----340°±4°
 END VOLTAGE-----0.2% MAX
 RESOLUTION-----ESSENTIALLY INFINITE
 OUTPUT SMOOTHNESS-----BELOW 0.1% AGAINST INPUT VOLTAGE
 CONTACT RESISTANCE VARIATION-----BELOW 2%
 INSULATION RESISTANCE-----1000MEGΩHMS @ 500VDC MIN.
 DIELECTRIC STRENGTH-----500 VAC

MECHANICAL

MECHANICAL ANGLE-----CONTINUOUS
 ROTATIONAL TORQUE-----0.7 OZ.IN.
 SHAFT END PLAY-----.006MAX.
 TEMPERATURE COEFFICIENT-----±400 PPM/°C
 WEIGHT, APPROX.-----1.1 OZ.
 ROTATIONAL LIFE-----10,000,000 TURNS

ENVIRONMENTAL

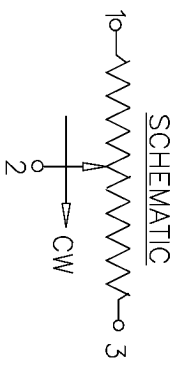
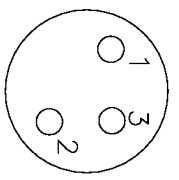
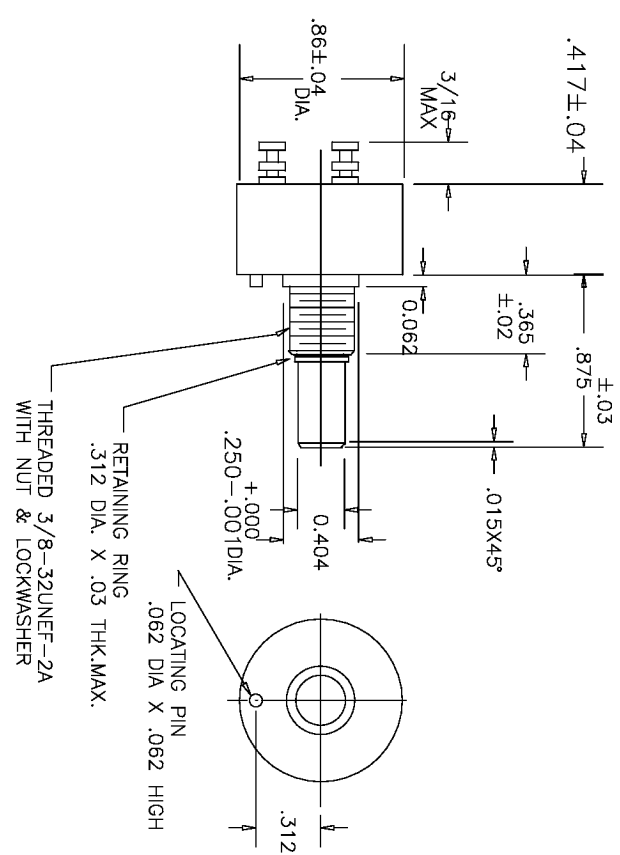
OPERATING TEMPERATURE-----55°C TO +105°C
 TEMPERATURE COEFFICIENT-----±400 P.P.M./°C
 VIBRATION-----10HZ TO 2000HZ 15G
 SHOCK-----50G 11MS
 MOISTURE RESISTANCE-----40°C 95%RH 120 HOURS

MATERIALS

HOUSING-----HIGH TEMPERATURE PLASTIC
 TERMINALS-----SOLDERABLE DOUBLE TURRET
 SHAFT-----STAINLESS STEEL
 ELEMENT-----CONDUCTIVE PLASTIC

OPTIONS

FRONT SHAFT MODIFICATIONS
 CENTER TAP
 O-RING SHAFT SEAL
 SEALED BODY
 SPECIAL ELECTRICAL / MECHANICAL ANGLES
 SPECIAL LINEARITY & RESISTANCE TOLERANCES
 SERVO MOUNT (SEE SP22GS)



TOLERANCES

XX = +/- .100" FRACT. = +/- 1/64"
 XXX = +/- .005" ANGLES = +/- 1/2"
 ALL SPECIFICATIONS SUBJECT TO CHANGE WITHOUT NOTICE.

SCALE	DATE:	10-19-00
NONE	BY	
APPRVD	BT	

CODE IDENT: 19477



ETI SYSTEMS
 CARLSBAD CALIFORNIA

TITLE

SINGLE TURN POTENTIOMETER

PART NO.

SP22G

X-ON Electronics

Largest Supplier of Electrical and Electronic Components

Click to view similar products for [Precision Potentiometers](#) category:

Click to view products by [ETI Systems](#) manufacturer:

Other Similar products are found below :

[578002M9648](#) [70J1G032S202A](#) [176FL1-284](#) [F78SB102-M257](#) [3548H-1AA-103B](#) [485025M9267](#) [MH12B-10L-10K](#) [578005M9656](#)
[72N4N048S203W](#) [RO200SF1C103](#) [114BF2A102-L774](#) [200FL1-199](#) [78FL1-397](#) [78MKV-128](#) [501-0004](#) [501-0018](#) [SE15303-352-T4](#)
[284TCBF103A26A1](#) [RO34SF1B502](#) [200FL1-260](#) [4205R10KL.5](#) [3548H-1AB-502A](#) [157-0237](#) [1521R10KL.3](#) [284TBBK103A26B1](#) [SP22G-](#)
[500](#) [DC22-10-100](#) [JC22S 1K 0.5%](#) [RCL-200](#) [380C2750K](#) [380C2500K](#) [3590P-1-103L](#) [3547S-1AA-202A](#) [534B1250JC](#) [3543S-1-202L](#)
[3545S-1-202L](#) [3543S-1-102L](#) [3543S-1-502L](#) [3545S-1-103L](#) [3549S-2AA-102/102A](#) [P3265](#) [P3270](#) [P3275](#) [P3280](#) [P3285](#) [P3290](#) [AR200KL.25](#)
[6637S-1-102](#) [RV6NAYSD101AP](#) [SP22E-3011-10K](#)