

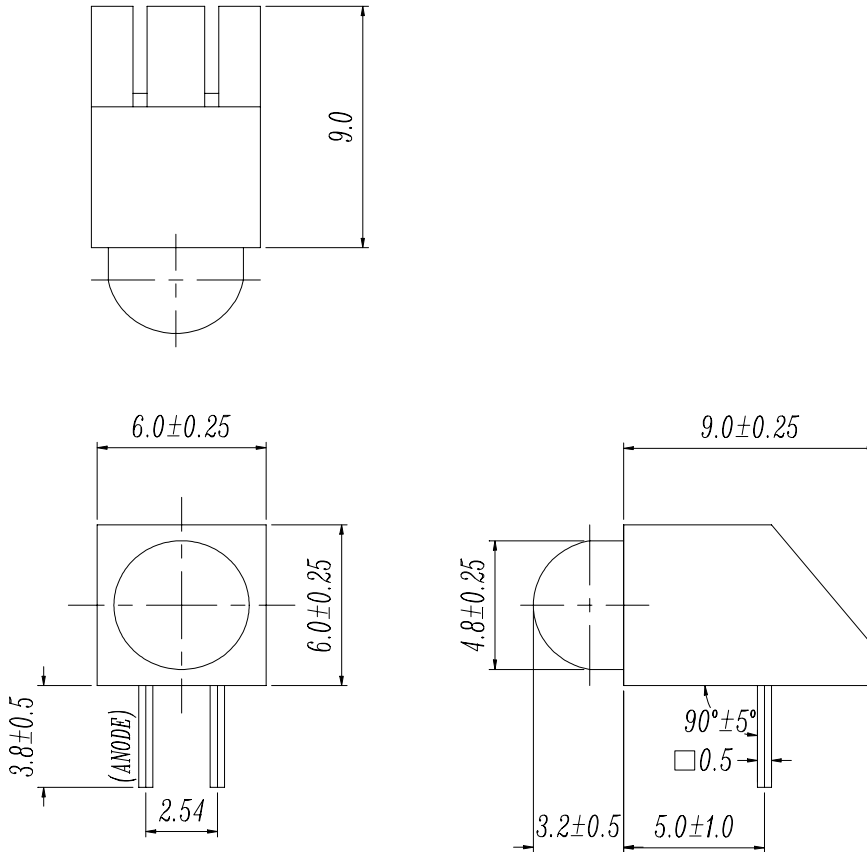


# EVERLIGHT ELECTRONICS CO.,LTD.

Device Number : DAE-093-030 REV: 1.1

MODEL NO : A93B/I ECN : \_\_\_\_\_ Page: 1/5

## ■ Package Dimensions:



## ■ Notes:

- 1.All dimensions are in millimeters, tolerance is 0.25mm except be specified
- 2.Lead spacing is measured where the lead emerge from the package

LED PART NO	CHIP		Lens Color
	Material	Emitted Color	
313ID	GaAsP/GaP	Hi-Eff Red	Red Diffused

Office : NO.25, Lane 76, Sec.3, Chung Yang Rd., Tucheng 236, Taipei,  
Taiwan, R.O.C.  
TEL : 886-2-22672000  
FAX : 886-2-22676306  
http : //www.everlight.com



■ Descriptions:

- 1.ARRAY=Plastic Holder+Combinations of lamp
- 2.The array will easily mount the applicable lamps on any panel

■ Features:

- 1.Low power consumption
- 2.High efficiency and low cost
- 3.Good control and free combinations on the colors of LED lamps
- 5.Good lock and easy to assembly
- 6.Stackable and easy to assembly
- 7.Stackable vertically and easy to assembly
- 8.Versatile mounting on P.C. B or panel
- 9.Stackable horizontally and easy to assembly

■ Applications:

- 1.Used as indicators of indicating the degree, functions, positions etc, in electronic instruments.



# EVERLIGHT ELECTRONICS CO.,LTD.

Device Number : DAE-093-030 REV: 1.1

MODEL NO : A93B/I ECN :          Page: 3/5

## ■ LED LAMP ARRAYS SELECTION GUIDE:

A    9 3    B /    I

SR:Super Red

H:Brihgt Red

I:Hi-Eff Red

A:Amber

Y:Yellow

E:Orange

G:Green

COLOR OF HOLDER(BLOCK)

MODEL

ARRAY



**Absolute Maximum Ratings at Ta = 25°C**

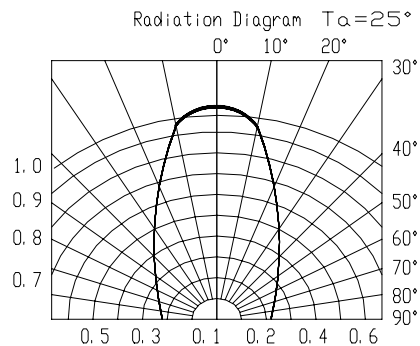
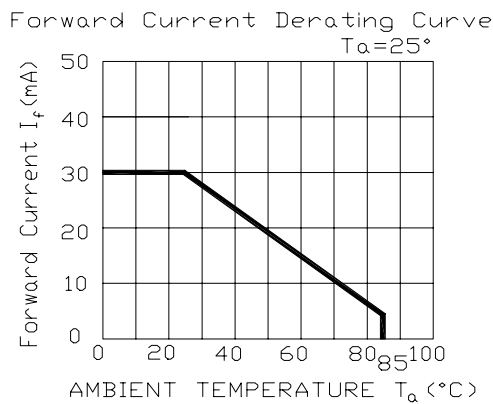
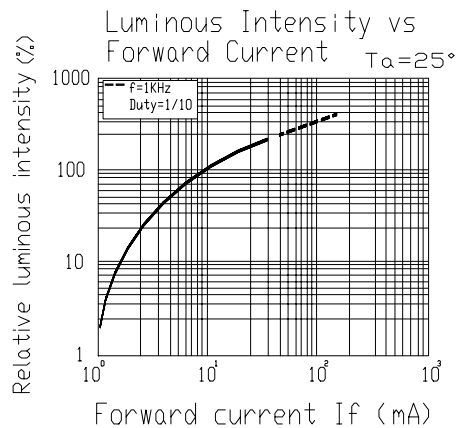
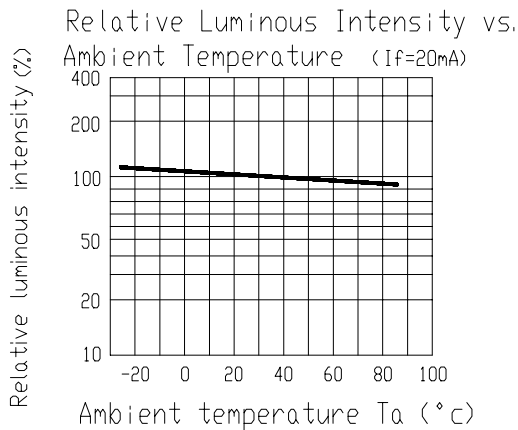
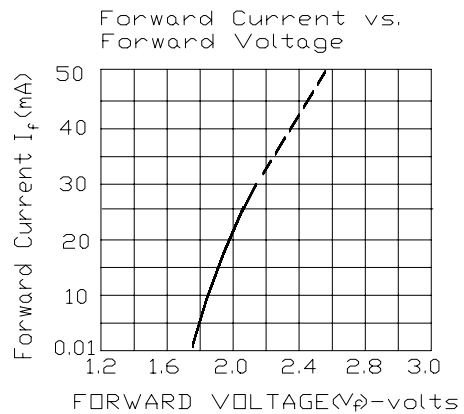
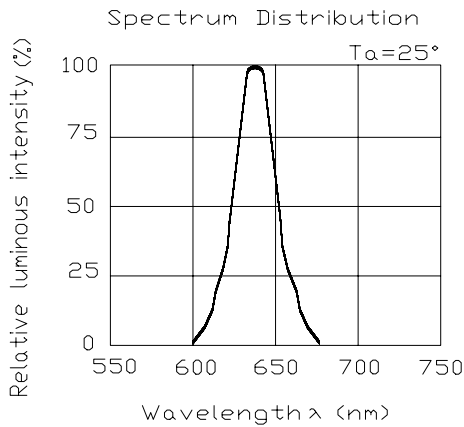
Parameter	Symbol	Rating	Unit
Forward Current	If	30	mA
Operating Temperature	Topr	-40 to +85	°C
Storage Temperature	Tstg	-40 to +100	°C
Soldering Temperature	Tsol	260 ± 5	°C
Power Dissipation	Pd	100	mW
Peak Forward Current(Duty 1/10 @ 1KHZ)	If(Peak)	160	mA
Reverse Voltage	Vr	5	V

**Electronic Optical Characteristics :**

Parameter	Symbol	MIN.	TYP.	MAX.	Unit	Condition
Luminous intensity	Iv	2.5	5.0	/	mcd	If= 10 mA
Viewing Angle	2θ 1/2	/	60	/	deg	If= 20 mA
Peak Wavelength	λ p	/	635	/	nm	If= 20 mA
Dominant Wavelength	λ d	/	625	/	nm	If= 20 mA
Spectrum Radiation Bandwidth	Δ λ	/	45	/	nm	If= 20 mA
Forward Voltage	Vf	1.7	2.0	2.4	V	If= 20 mA
Reverse Current	Ir	/	/	10	μ A	Vr= 5 V



■ Typical Electro-Optical Characteristic Curves:



## X-ON Electronics

Largest Supplier of Electrical and Electronic Components

*Click to view similar products for [Standard LEDs - SMD category](#):*

*Click to view products by [Everlight manufacturer](#):*

Other Similar products are found below :

[LTST-C190KYKT](#) [LTST-C19GD2WT](#) [LTST-N683GBEW](#) [LTW-170ZDC](#) [LTW-M140SZS40](#) [LTW-M140ZVS](#) [598-8110-100F](#) [91-21SUBCS400-A6TR7](#) [AAAF5060QBFSEEZGS](#) [APT1608QGW](#) [EAST2012YA0](#) [99-213/R6C-AR2T1B/2C](#) [SML-LX0606SISUGC/A](#) [SML-LXR851SIUPGUBC](#) [LT1ED53A](#) [AM27ZGC03](#) [APFA3010SURKCGKQBDC](#) [APHK1608VGCA](#) [APT2012QGW](#) [LTST-008BGEW](#) [LTW-010DCG](#) [LTW-020ZDCG](#) [LTW-21TS5](#) [LTW-220DS5](#) [LO T67F-V1AB-24-1](#) [598-8330-117F](#) [CMDA20AYAA7D1S](#) [95-21SURCS530-A3TR10](#) [HSMQ-C177](#) [598-8040-100F](#) [598-8070-100F](#) [598-8140-100F](#) [598-8610-200F](#) [SML-LXL1209SYC/ATR](#) [CMD91-21VRC/TR7](#) [SML-LXR851SGSIC-TR](#) [SML-512PWT86A](#) [SMF-2432GYC-TR](#) [EASV3015RGYA0](#) [LTST-C190KFKT-5A](#) [LTST-C194TBKT-5A](#) [CLX6E-FKC-CH1M1D1BB7C3D3](#) [SML-LXL0805USBC-TR](#) [SML-LX2835SYSUGCTR](#) [LTW-M670ZVS-M5](#) [APA2106ZGC/G](#) [CLMXB-FKA-CbcfghjnpACBB79463](#) [VFA1101W-5AY3B2-TR](#) [LCB P473-P2R2-3J7L-1-Z](#) [HSMR-C197](#)