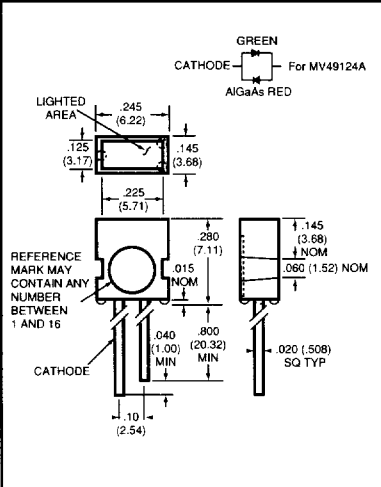
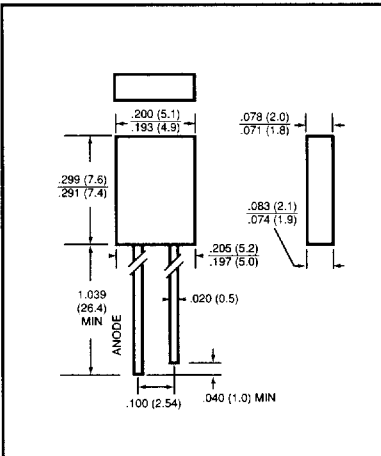


RECTANGULAR & UNIQUELY SHAPED LED LAMPS

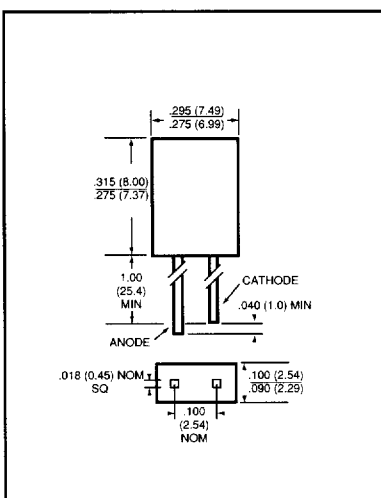
.220" x .125" Rectangular Lamp										
Part Number	Source Color	Wave-length λ_p (nm)	Lens Color	Typical Viewing Angle	Forward Voltage V_F (V)		Luminous Intensity I_V (mcd)		Notes	
					typ	max	min	typ		
MV57124A		635	Red Diffused	100°	2.0	3.0	1.0	6.0	4	
MV54124A		565	Green Diffused	100°	2.2	3.0	1.0	6.0	4	
MV53124A	Yellow	585	Yellow Diffused	100°	2.0	3.0	1.0	6.0	4	
MV49124A		660 565	White Diffused	100°	2.2	3.0	1.0	6.0	4	



2 x 5 mm Rectangular Lamp										
Part Number	Source Color	Wave-length λ_p (nm)	Lens Color	Typical Viewing Angle	Forward Voltage V_F (V)		Luminous Intensity I_V (mcd)		Notes	
					typ	max	min	typ		
MV57123		635	Red Diffused	100°	2.0	3.0	1.0	4.0	4	
MV54123		565	Green Diffused	100°	2.2	3.0	1.0	4.0	4	
MV53123	Yellow	585	Yellow Diffused	100°	2.1	3.0	1.0	4.0	4	

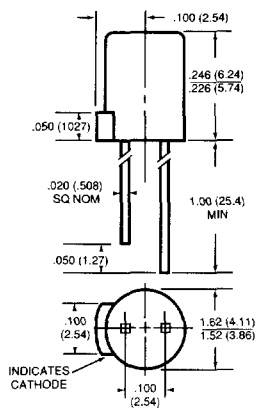


2.5 X 7.4 mm Rectangular Lamp										
Part Number	Source Color	Wave-length λ_p (nm)	Lens Color	Typical Viewing Angle	Forward Voltage V_F (V)		Luminous Intensity I_V (mcd)		Notes	
					typ	max	min	typ		
HLMP-0300		635	Red Diffused	100°	2.1	3.0	1.0	2.5	4	
HLMP-0301		635	Red Diffused	100°	2.1	3.0	2.5	5.0	4	
HLMP-0503		565	Green Diffused	100°	2.3	3.0	1.5	3.0	4	
HLMP-0504		565	Green Diffused	100°	2.3	3.0	2.5	5.0	4	
HLMP-0400	Yellow	585	Yellow Diffused	100°	2.2	3.0	1.5	2.5	4	
HLMP-0401	Yellow	585	Yellow Diffused	100°	2.2	3.0	3.0	5.0	4	

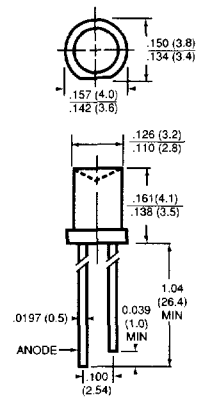


RECTANGULAR & UNIQUELY SHAPED LED LAMPS

4 mm Flat Top									
Part Number	Source Color	Wave-length λ_p (nm)	Lens Color	Typical Viewing Angle	Forward Voltage V_F (V)		Luminous Intensity I_V (mcd)		Notes
					typ	max	min	typ	
HLMP-M200		635	Red Diffused	135°	2.2	3.0	3.4	5.0	4
HLMP-M201		635	Red Diffused	135°	2.2	3.0	5.4	7.0	4
HLMP-M250		635	Red Clear	80°	2.2	3.0	3.4	5.0	5
HLMP-M251		635	Red Clear	80°	2.2	3.0	5.4	7.0	5
HLMP-M500			565	Green Diffused	135°	2.3	3.0	4.2	7.0
HLMP-M501	565		Green Diffused	135°	2.3	3.0	6.7	10.0	4
HLMP-M550	565		Green Clear	80°	2.3	3.0	4.2	10.0	5
HLMP-M551	565		Green Clear	80°	2.3	3.0	6.7	16.0	5
HLMP-M300	Yellow	585	Yellow Diffused	135°	2.2	3.0	3.6	5.0	4
HLMP-M301		585	Yellow Diffused	135°	2.2	3.0	5.7	7.0	4
HLMP-M350		585	Yellow Clear	80°	2.2	3.0	3.6	5.0	5
HLMP-M351		585	Yellow Clear	80°	2.2	3.0	5.7	7.0	5



T-100 Inverted Cone									
Part Number	Source Color	Wave-length λ_p (nm)	Lens Color	Typical Viewing Angle	Forward Voltage V_F (V)		Luminous Intensity I_V (mcd)		Notes
					typ	max	min	typ	
QL484ET		635	Orange Clear	180°	2.0	2.8	0.6	1.2	5
QL484GT		565	Green Clear	180°	2.1	2.8	0.6	1.2	5
QL484HT		697	Red Clear	180°	2.0	2.8	0.3	0.6	5
QL484IT		635	Red Clear	180°	2.0	2.8	0.6	1.2	5
QL484RT		660	Red Clear	180°	1.7	2.0	0.3	0.5	5
QL484YT	Yellow	585	Yellow Clear	180°	2.0	2.8	0.4	1.0	5



Notes:

1. V_F & I_V @ $I_F = 1$ mA.
 3. V_F & I_V @ $I_F = 10$ mA.
 4. V_F & I_V @ $I_F = 20$ mA.
 5. V_F @ $I_F = 20$ mA; I_V @ $I_F = 10$ mA
- HER = High Efficiency Red.

X-ON Electronics

Largest Supplier of Electrical and Electronic Components

Click to view similar products for [LED Circuit Board Indicators](#) category:

Click to view products by [Everlight](#) manufacturer:

Other Similar products are found below :

[568-0701-841F](#) [LTL-4221NH129](#) [LTL-42DGNMHDP1](#) [HLMP1521101](#) [HLMP1523802F](#) [HLMP1700101F](#) [HLMP1700104F](#) [BHA-1564-G](#)
[SMF-HM1530YD-305](#) [SSF-LXH409SYSUGW](#) [AM2520EHSGD](#) [HLMP1301104F](#) [HLMP1385101F](#) [HLMP1421101](#) [HLMP1503103F](#)
[HLMP1503104F](#) [HLMP1700102F](#) [HLMP1700106F](#) [HLMP1700107F](#) [HLMP1790101F](#) [HLMP1790103F](#) [LTL-4211NHBP](#) [5390H3](#) [551-](#)
[2802F](#) [552-0794-810F](#) [553-0222-812F](#) [HT3-BC-T](#) [564-0700-831F](#) [WP59BLGEW](#) [103-3101-1231-403](#) [5502407811F](#) [550-3007-810F](#) [551-](#)
[3307MF](#) [552080-1](#) [573-2399-100F](#) [592-2020-302F](#) [5932-927-2701-3F](#) [SMF-HM1530SRD-509](#) [SSF-LXH100MID](#) [SSF-LXH2103SRSDRP](#)
[SSF-LXH555USBW](#) [WP937SB/4YGW](#) [WP937EB2EGW](#) [551-0312-802F](#) [553-0110-802F](#) [561-5501-050F](#) [6202T3-5VLC](#) [LTL-307G08A-D](#)
[CMD57164](#) [568-2231-313F](#)