

Heavy Duty Light Meter with PC Interface

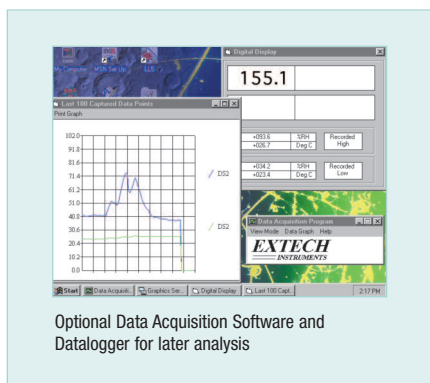
✓ Simultaneous display of Foot Candles or Lux
 Plus four lighting types - now includes Sodium light measurements

Features:

- Microprocessor assures maximum accuracy plus special functions
- Fc Range: 200.0, 2000, 5000Fc
 Lux Range: 2000, 20,000, 50,000Lux
- Basic accuracy of $\pm 4\%$ FS
- Large 1.4" (1999 count) LCD display
- % displays differential from reference point
- "ZERO" Re-Calibration
- Utilizes precision photo diode and color correction filter
- Cosine and color corrected measurements
- $\pm 4\%$ accuracy is enhanced by selecting lighting type (Tungsten/Daylight, Fluorescent, Sodium, Mercury)
- Record/Recall MIN, MAX and AVG readings
- Data Hold plus Auto shut off
- Built-in RS-232 serial interface, optional software
- Dimensions: 7 x 2.9 x 1.3" (178 x 74 x 33mm);
 Weight: 1.6lbs. (726g)
- Complete with 9V battery, light sensor with 45" (1.1m) cable, protective cover, and holster with stand

Interface Options:

- Optional Windows[®] Data Acquisition Software and serial cable enable user to display and capture readings on a PC, and set time intervals and alarms
- Optional battery operated Datalogger module stores over 8000 readings for later transfer to a PC



Optional Data Acquisition Software and Datalogger for later analysis

Ordering Information:

- 407026Foot Candle/Lux Meter
- 407026-NIST407026 with NIST Certificate
- 156119117V AC Adaptor
- 156221220V AC Adaptor
- 409997Large Soft Vinyl Pouch Carrying Case
- 140001Hard Vinyl Case with Handle (for Heavy Duty Series)
- 407001Data Acquisition Software & Serial Cable
- 407001-USBUSB Adaptor for 407001
- 380340Battery Operated Datalogger Module



X-ON Electronics

Largest Supplier of Electrical and Electronic Components

Click to view similar products for [Environmental Test Equipment](#) category:

Click to view products by [Extech](#) manufacturer:

Other Similar products are found below :

[CW40](#) [F150C10E3DRT](#) [F150LTC20](#) [F150CD10E2](#) [F150L75](#) [F150LRS](#) [S-11](#) [FLUKE-LDG](#) [382153](#) [FM100](#) [RH210](#) [382253](#) [MO290-P](#)
[GEO-CABLE-REEL-50M](#) [T197914](#) [RD300-L](#) [IR11BD](#) [IR11GM](#) [IR12GM](#) [IR21BD](#) [IR31CE](#) [IR32BC](#) [IR33BC](#) [MP7217TC](#) [NGM-1](#) [SGX-](#)
[7NH3](#) [UT381](#) [F150-SLC50](#) [AW-CO-1000](#) [AW-NmHc-100](#) [3.000.401](#) [AX-7535](#) [CS-9S6SS-A](#) [P 2800 A](#) [P 2801](#) [P 2802](#) [P 5039](#) [P 5130](#) [P](#)
[5055](#) [P 5060](#) [P 5065](#) [P 5086](#) [P 5090](#) [P 5110](#) [P 5115](#) [P 5135](#) [P 5140](#) [P 5145](#) [P 5150](#) [P 5160](#)