

# RM Cores (6295420121)

Part Number: 6295420121

95 RM CORE SET

RM (Rectangular Modulus) cores allow better shielding than E type geometries while also providing easier winding accessibility and better power dissipation than a pot core configuration. Fair-Rite's standard RM cores all have a solid center post and standard height, low profile and alternate materials are available upon request.

□ RM cores can be supplied with the center post gapped to a mechanical dimension or an  $A_L$  value.

[Catalog Drawing](#)

[3D Model](#)

Weight indicated is per pair or set.

Weight: 69 (g)

Dim	mm	mm tol	nominal inch	inch misc.
A	41.6	± 0.60	1.638	—
B	15.05	± 0.10	0.593	—
C	18.7	± 0.30	0.736	—
D	10.55	± 0.20	0.415	—
E	29.5	± 0.50	1.161	—
F	14.75	± 0.25	0.581	—
G	17	min	0.670	min
J	34.15	± 0.65	1.344	—

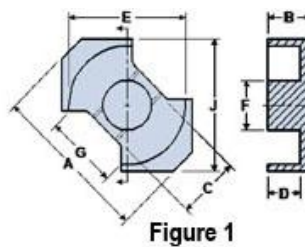



Figure 1

### Chart Legend

$\Sigma l / A$  : Core Constant,  $l_e$  : Effective Path Length,  $A_e$  : Effective Cross- Sectional Area,  $V_e$  : Effective Core Volume

$A_L$  : Inductance Factor 

Explanation of Part Numbers: Digits 1 & 2 = product class and 3 & 4 = material grade.

Electrical Properties	
$A_L$ (nH)	7500 ±25%
$A_e$ (cm <sup>2</sup> )	1.95
$\Sigma l / A$ (cm <sup>-1</sup> )	3.8
$l_e$ (cm)	7.38
$V_e$ (cm <sup>3</sup> )	14.37
$A_{min}$ (cm <sup>2</sup> )	1.709

$A_L$  value is measured at 1 kHz, B < 10 gauss.

## X-ON Electronics

Largest Supplier of Electrical and Electronic Components

*Click to view similar products for [Ferrite Cores & Accessories](#) category:*

*Click to view products by [Fair-Rite](#) manufacturer:*

Other Similar products are found below :

[B65512C0000T001](#) [B65522B0000T001](#) [B65549E4X23](#) [B65659F0003X023](#) [B65659F4X23](#) [B65665C0004X000](#) [B65679E3X22](#)

[B65705B0003X000](#) [B65804C2005X000](#) [B65812B3003X22](#) [B65814B2005X000](#) [B65840B1006D001](#) [B65840B1006D002](#)

[B65878E0012D001](#) [B66206A2001X000](#) [B66206J1106T1](#) [B66252BM1](#) [B66288F2204X000](#) [B66306C1010T2](#) [B66341G0000X127](#)

[B66390A1016T001](#) [B67348A1X27](#) [B62152P0007X030](#) [B65518D2001X000](#) [B65535B0003X000](#) [B65539C1003X1](#) [B65542A5000X](#)

[B65655B0009X000](#) [B65687A1000T001](#) [B65714K1020T001](#) [B65734B1000T001](#) [B65734B1000T1](#) [B65804B6010T1](#) [B65814N1008D002](#)

[B65816N1011D1](#) [B65844W1010D001](#) [B65848D1010D1](#) [B65848S2000X](#) [B65884E0012D001](#) [B66202A2010X000](#) [B66202B1106T001](#)

[B66206B1110T001](#) [B66208K1009T001](#) [B66208X1010T001](#) [B66291P0000X187](#) [B66387G1200X187](#) [B66461P0000X187](#) [B67410A72X27](#)

[UECESDFPL20150](#) [UECESDR14C2000](#)