

## EP Cores (6578100121)

Part Number: 6578100121

78 EP CORE SET

EP designs reduce the effect of residual air gap upon the effective permeability of the core, hence they minimize coil volume for a given inductance. EP cores also provide a high degree of isolation from adjacent components and are advantageously used in low power devices, matching and broadband transformers.

□ EP cores can be supplied with the center post gapped to a mechanical dimension or an  $A_L$  value.

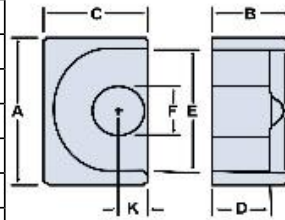
[Catalog Drawing](#)

[3D Model](#)

Weight indicates is per pair or set.

Weight: 1.4 (g)

Dim	mm	mm tol	nominal inch	inch misc.
A	11.5	± 0.30	0.453	—
B	5.1	± 0.20	0.201	—
C	7.7	± 0.20	0.303	—
D	3.8	± 0.20	0.15	—
E	9.4	± 0.20	0.37	—
F	3.3	± 0.20	0.13	—
K	1.95	min	0.076	—



### Chart Legend

$\Sigma l / A$  : Core Constant,  $l_e$  : Effective Path Length,  $A_e$  : Effective Cross- Sectional Area,  $V_e$  : Effective Core Volume

$A_L$  : Inductance Factor 

Explanation of Part Numbers: Digits 1 & 2 = product class and 3 & 4 = material grade.

Electrical Properties	
$A_L$ (nH)	1000 ±25%
$A_e$ (cm <sup>2</sup> )	0.11
$\Sigma l / A$ (cm <sup>-1</sup> )	16.8
$l_e$ (cm)	1.85
$V_e$ (cm <sup>3</sup> )	0.203
$A_{min}$ (cm <sup>2</sup> )	0.085

$A_L$  value is measured at 1 kHz, B < 10 gauss

## X-ON Electronics

Largest Supplier of Electrical and Electronic Components

*Click to view similar products for [Ferrite Cores & Accessories](#) category:*

*Click to view products by [Fair-Rite](#) manufacturer:*

Other Similar products are found below :

[B65512C0000T001](#) [B65522B0000T001](#) [B65549E4X23](#) [B65659F0003X023](#) [B65659F4X23](#) [B65665C0004X000](#) [B65679E3X22](#)

[B65705B0003X000](#) [B65804C2005X000](#) [B65812B3003X22](#) [B65814B2005X000](#) [B65840B1006D001](#) [B65840B1006D002](#)

[B65878E0012D001](#) [B66206A2001X000](#) [B66206J1106T1](#) [B66252BM1](#) [B66288F2204X000](#) [B66306C1010T2](#) [B66341G0000X127](#)

[B66390A1016T001](#) [B67348A1X27](#) [B62152P0007X030](#) [B65518D2001X000](#) [B65535B0003X000](#) [B65539C1003X1](#) [B65542A5000X](#)

[B65655B0009X000](#) [B65687A1000T001](#) [B65714K1020T001](#) [B65734B1000T001](#) [B65734B1000T1](#) [B65804B6010T1](#) [B65814N1008D002](#)

[B65816N1011D1](#) [B65844W1010D001](#) [B65848D1010D1](#) [B65848S2000X](#) [B65884E0012D001](#) [B66202A2010X000](#) [B66202B1106T001](#)

[B66206B1110T001](#) [B66208K1009T001](#) [B66208X1010T001](#) [B66291P0000X187](#) [B66387G1200X187](#) [B66461P0000X187](#) [B67410A72X27](#)

[UECESDFPL20150](#) [UECESDR14C2000](#)