

PQ Cores (6695353621)



Part Number: 6695353621

95 PQ CORE SET

PQ cores were developed for use in power applications. The large surface area to volume of the core aids in heat dissipation. PQ cores are employed both in filter and transformer designs for switch mode power supplies.

PQ cores can be supplied with the centerpost gapped to a mechanical dimension or an A_L value.

[Catalog Drawing](#)
[3D Model](#)

Weight indicated is per pair or set.

Weight: 73 (g)

Dim	mm	mm tol	nominal inch	inch misc.
A	35.1	± 0.60	1.382	—
B	17.4	± 0.20	0.685	—
C	26	± 0.50	1.024	—
D	12.5	± 0.20	0.492	—
E	32	± 0.50	1.26	—
F	14.35	± 0.25	0.565	—
G	23.5	min	0.926	min

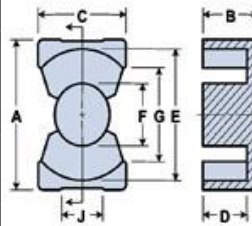



Chart Legend

$\Sigma l / A$: Core Constant, l_e : Effective Path Length, A_e : Effective Cross- Sectional Area, V_e :
Effective Core Volume
 A_L : Inductance Factor 

Explanation of Part Numbers: Digits 1 & 2 = product class and 3 & 4 = material grade.

Electrical Properties	
A_L (nH)	6200 ±25%
A_e (cm ²)	1.83
$\Sigma l / A$ (cm ⁻¹)	4.82
l_e (cm)	8.82
V_e (cm ³)	16.13
A_{min} (cm ²)	1.617

A_L value is measured at 1 kHz, B < 10 gauss.

X-ON Electronics

Largest Supplier of Electrical and Electronic Components

Click to view similar products for [Ferrite Cores & Accessories](#) category:

Click to view products by [Fair-Rite](#) manufacturer:

Other Similar products are found below :

[B65512C0000T001](#) [B65522B0000T001](#) [B65549E4X23](#) [B65659F0003X023](#) [B65659F4X23](#) [B65665C0004X000](#) [B65679E3X22](#)

[B65705B0003X000](#) [B65804C2005X000](#) [B65812B3003X22](#) [B65814B2005X000](#) [B65840B1006D001](#) [B65840B1006D002](#)

[B65878E0012D001](#) [B66206A2001X000](#) [B66206J1106T1](#) [B66252BM1](#) [B66288F2204X000](#) [B66306C1010T2](#) [B66341G0000X127](#)

[B66390A1016T001](#) [B67348A1X27](#) [B62152P0007X030](#) [B65518D2001X000](#) [B65535B0003X000](#) [B65539C1003X1](#) [B65542A5000X](#)

[B65655B0009X000](#) [B65687A1000T001](#) [B65714K1020T001](#) [B65734B1000T001](#) [B65734B1000T1](#) [B65804B6010T1](#) [B65814N1008D002](#)

[B65816N1011D1](#) [B65844W1010D001](#) [B65848D1010D1](#) [B65848S2000X](#) [B65884E0012D001](#) [B66202A2010X000](#) [B66202B1106T001](#)

[B66206B1110T001](#) [B66208K1009T001](#) [B66208X1010T001](#) [B66291P0000X187](#) [B66387G1200X187](#) [B66461P0000X187](#) [B67410A72X27](#)

[UECESDFPL20150](#) [UECESDR14C2000](#)