

## SMD High Current Molded Inductors - FCH0630 - Series

FCH0630-Series

**●Features:**

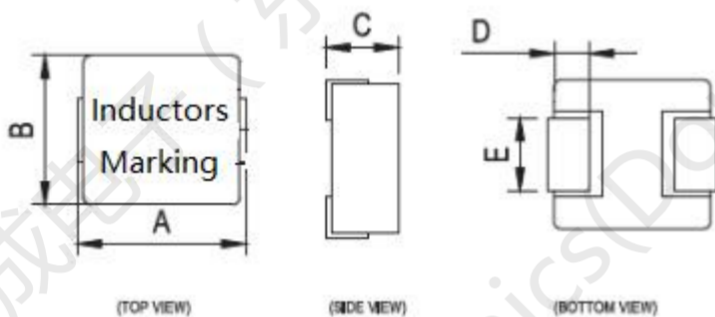
- Ultra low cost
- Shielded constructions
- High current rating up to DC 28Amp
- High frequency range up to 5MHz
- Very low DC resistance
- Low Noise
- RoHS compliant

**●Applications:**

- PDA/Notebook/Desktop/Server applications
- DC/DC converter

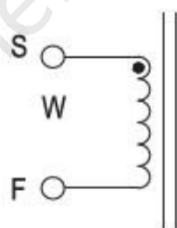


### 1.Shapes and Dimensions (形状及尺寸)

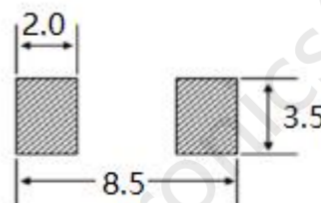


Type	A	B	C	D	E
FCH0630	7.5MAX	6.8 MAX	3.0 MAX	1.6±0.3	3.0±0.3

### 2. Schematic:



### 3. layout recommendation: (mm)



SMD High Current Molded Inductors -FCH0630- Series

4.FCH0630-Series:

Part Number (品名)	Inductance ( $\mu$ H) $\pm$ 20% (电感值)	DCR(m $\Omega$ ) (直流阻抗)		Isat DC Curren (A) (饱和电流)	Irms DC Curren (A) (温升电流)
		Typical	MAX	Typical	Typical
FCH0630-R10Y	0.1 $\pm$ 30%	0.55	0.74	30.0	28.0
FCH0630-R15M	0.15	0.70	1.20	28.0	25.0
FCH0630-R22M	0.22	2.5	2.8	26.0	23.0
FCH0630-R33M	0.33	2.50	3.00	25.0	21.0
FCH0630-R47M	0.47	3.4	4.1	20.0	19.0
FCH0630-R56M	0.56	4.8	6.8	19.5	18.0
FCH0630-R68M	0.68	4.7	5.4	19.0	17.0
FCH0630-R82M	0.82	5.6	7.5	18.0	16.0
FCH0630-1R0M	1.00	7.6	9.0	16.5	14.0
FCH0630-1R2M	1.20	8.0	10.5	14.0	12.2
FCH0630-1R5M	1.50	10.0	13.0	12.0	11.5
FCH0630-2R2M	2.20	15.0	18.0	10.0	8.0
FCH0630-2R7M	2.70	21.0	25.3	10.0	8.5
FCH0630-3R3M	3.30	22.0	30.0	9.5	7.0
FCH0630-4R7M	4.70	30.4	35.0	7.0	6.5
FCH0630-5R6M	5.60	37.4	42.0	6.0	5.5
FCH0630-6R8M	6.80	41.0	50.0	6.0	5.5
FCH0630-8R2M	8.20	64.0	68.0	5.5	5.0
FCH0630-100M	10.00	60.0	68.0	5.0	4.5
FCH0630-150M	15.00	90.0	115.0	4.0	3.5
FCH0630-220M	22.00	125.0	145.0	3.2	3.0
FCH0630-330M	33.00	220.0	253.0	2.5	2.1
FCH0630-470M	47.00	296.0	340.0	2.0	1.8
FCH0630-680M	68.00	506.0	581.9	2.0	1.5
FCH0630-101M	100.00	825.0	932.0	1.5	1.0

Remark:

<1>Inductance: 100KHz 0.1V

<2>Tolerance of inductance: $\pm$ 20%

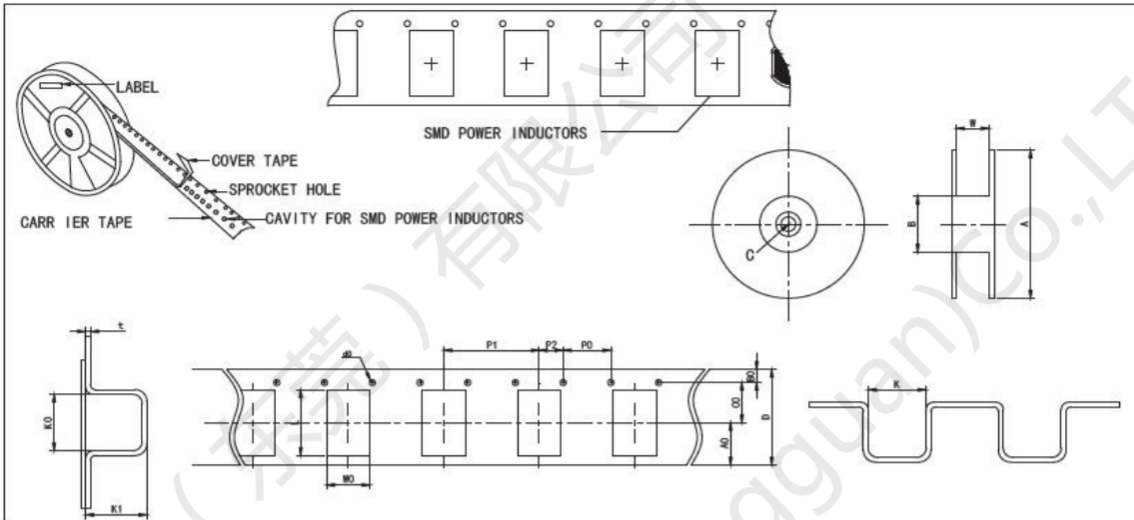
<3>Isat: The value of curret indicates that inductance drops 30%( Typcial ) from its initial value

<4>Irms:The value of current indicates that the temperature of the coil is increase 40 $^{\circ}$ C (Typical)

<5>Test condition: Ta= 25 $^{\circ}$ C

## SMD High Current Molded Inductors -FCH0630- Series

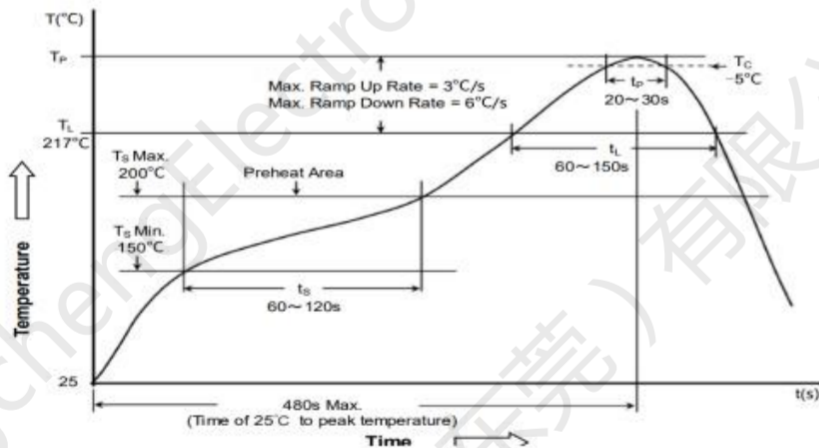
### 5.FCH0630-Series



●Reel Dimensions & Packing Unit(卷轴尺寸及包装数量)

Dimensions of Reel 卷轴尺寸				Packaging Unit 包装数
A	B	C	W	
330	100.0±1.00	13.0±1.0	16±0.20	1000pcs/r

6. Reflow Profile for SMT Components



	Package Thickness 封装厚度	Package Volume 封装体积		
		<350 mm <sup>3</sup>	350~2000 mm <sup>3</sup>	>2000 mm <sup>3</sup>
PB-Free Assembly 无铅装配	<1.6mm	260°C	260°C	260°C
	1.6~2.5mm	260°C	250°C	245°C
	≥2.5mm	250°C	245°C	245°C

※ Reflow is referred to standard IPC/JEDEC J-STD-020D.  
回流焊参照标准 IPC/JEDEC J-STD-020D。

## X-ON Electronics

Largest Supplier of Electrical and Electronic Components

*Click to view similar products for [Fixed Inductors](#) category:*

*Click to view products by [FANGCHENG](#) manufacturer:*

Other Similar products are found below :

[CR32NP-100KC](#) [70F224AI](#) [MHQ1005P10NJ](#) [MHQ1005P1N0S](#) [MHQ1005P2N4S](#) [MHQ1005P3N6S](#) [MHQ1005P5N1S](#) [MHQ1005P8N2J](#)  
[PE-53601NL](#) [PE-53602NL](#) [PG0936.113NLT](#) [9220-20](#) [9310-16](#) [PM06-2N7](#) [PM06-39NJ](#) [A01TK](#) [1206CS-471XJ](#) [HC2-R47-R](#) [HC8-1R2-R](#)  
[HCF1305-3R3-R](#) [1206CS-151XG](#) [RCH664NP-4R7M](#) [RCP1317NP-391L](#) [DH2280-4R7M](#) [DS1608C-106](#) [B10TJ](#) [B82498B3101J000](#) [ELJ-](#)  
[RE27NJF2](#) [1812CS-153XJ](#) [1812CS-183XJ](#) [1812CS-223XJ](#) [1812LS-104XJ](#) [1812LS-105XJ](#) [1812LS-124XJ](#) [1812LS-154XJ](#) [1812LS-223XJ](#)  
[1812LS-224XJ](#) [1812LS-563XJ](#) [1812LS-683XJ](#) [1812LS-824XJ](#) [NIN-FB101JTR110F](#) [NIN-FB471JTR62F](#) [NIN-FC1R5JTR220F](#) [NIN-](#)  
[HCR15JTRF](#) [NIN-HCR33JTRF](#) [NIN-HDR22JTRF](#) [NIN-HDR82JTRF](#) [NIN-HK2N7STRF](#) [NIN-PA150KTR370F](#) [NIN-PB100KTR550F](#)