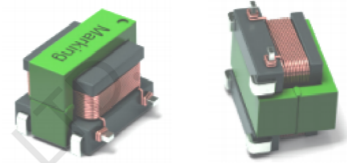
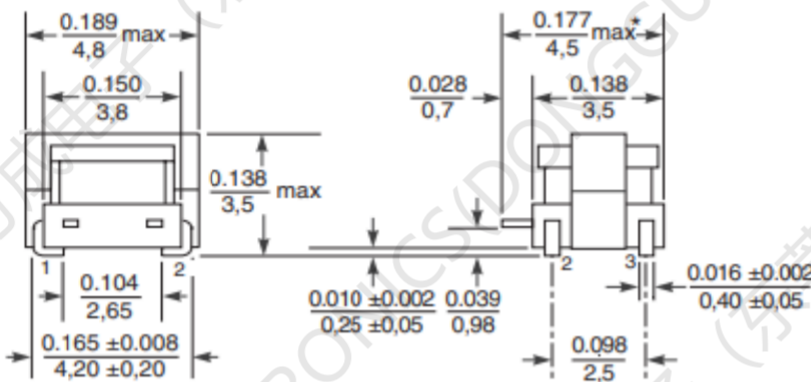


FC-SCT 4.2 –Series Current Sense Transformers

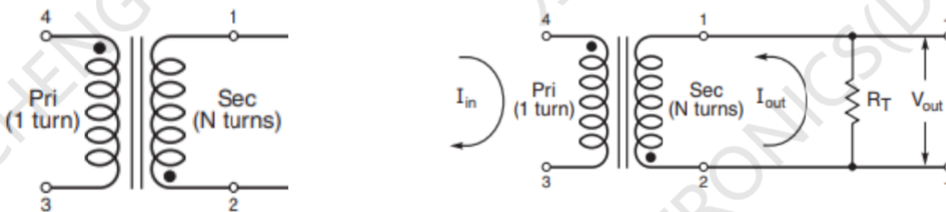
AEC-Q200 Grade 1 qualified (–40° C to +125° C ambient)
 Small surface mount current sensors
 Sensed current up to 7 A; Frequency range up to 1 MHz Very
 low primary DC resistance
 1500 Vrms, one minute isolation (hipot) between windings
 Can also be used in 48 V vehicle electrical systems



1. Dimensions:mm



2.Schematic:

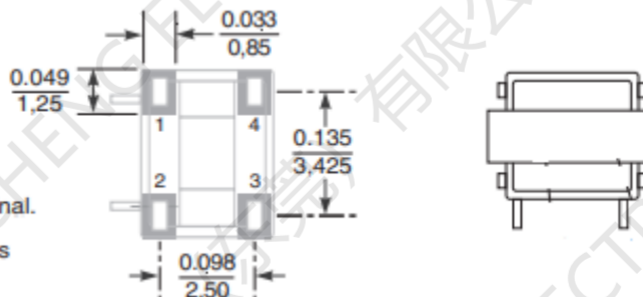


3. Recommended Land Pattern

Dimensions are in $\frac{\text{inches}}{\text{mm}}$

* Includes solder applied to side terminal.

Unless otherwise specified, tolerances are ± 0.004 in / 0,10 mm.



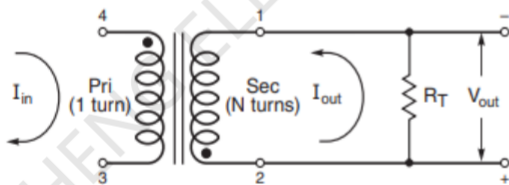
4. ELECTRIC CHARACTERICS)

Electrical Specifications @ 25°C — Operating Temperature -40°C to +125°C

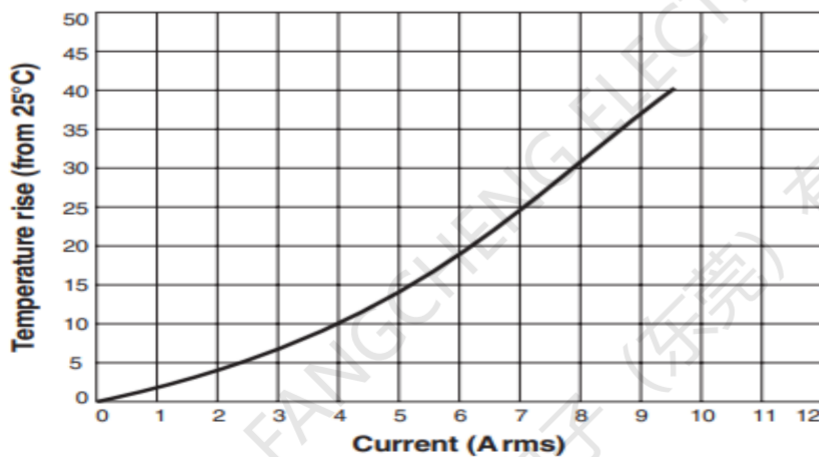
Part Number	Turns Ration	Current Rating _{2 NP} (A)	Secondary Inductance (uH MIN)	DCR (Ω typ)		Hipot (VDC)
				Primary (4-3)	Secondary (2-1)	Np-Ns
FC-SCT4.2-1:20	1:20	7	33	0.003	0.35	1500V
FC- SCT4.2-1:30	1:30	7	74	0.003	0.90	1500V
FC- SCT4.2-1:40	1:40	7	132	0.003	1.60	1500V
FC- SCT4.2-1:50	1:50	7	205	0.003	2.50	1500V
FC- SCT4.2-1:60	1:60	7	295	0.003	3.60	1500V
FC- SCT4.2-1:70	1:70	7	400	0.003	4.60	1500V
FC- SCT4.2-1:100	1:100	7	820	0.003	9.50	1500V
FC- SCT4.2-1:125	1:125	7	1280	0.003	13.0	1500V
FC- SCT4.2-1:150	1:150	7	1800	0.003	21.0	1500V

Inductance measured between secondary pins at 100 kHz, 0.1 Vrms,
 Ambient temperature -40° C to +125° C
 Storage temperature Component: -40° C to +85° C

5. Typical Circuit



6. Temperature Rise vs Current



X-ON Electronics

Largest Supplier of Electrical and Electronic Components

Click to view similar products for [FANGCHENG manufacturer:](#)

Other Similar products are found below :

[DEP23-220M](#) [FC-SLF1813-251-6A-LF](#) [FC-ALX 5030D-2R2MT](#) [DPE3119-100M](#) [FC-ALX 6030D-1R5MT](#) [FC-DEM1623-220M](#) [FC-SCT1010-1:150T-40A](#) [FC-PFC1060-850M-B-L](#) [FC-DEM1623-150M](#) [FC-ALX 6050D-5R6MT](#) [FC-ALX 6050D-6R8MT](#) [FC-ALX 6020D-R20MT](#) [FC-ALX 6030D-1R0MT](#) [DPE3119-150M](#) [FC-PT3215B-330L](#) [FC-ALX 5030D-1R2MT](#) [FC-SE2915-120M](#) [FC-ALX 4030D-R33MT](#) [FC-DLH2315-150M](#) [DEP23-470M](#) [FC-ALX6020D-1R1MT](#) [FC-ALX6020D-R90MT](#) [FC-ALX 6030D-1R2MT](#) [DEP17A-220](#) [FC-TCH1065-230Y-T](#) [FC-ALX 6030D-R68MT](#) [FC-SLF1285-5.0mH-2.0A-LF](#) [FC-ALX 5030D-R80MT](#) [DEP1410-220](#) [FC-DR1207-101MT](#) [FC-DLSF1010-5mH-3.5A-L](#) [FC-SLF1813-10mH-2.5A-LF](#) [FC-ST1390-R68M-50A-L](#) [FC-SLF2210-431-LF](#) [FC-DLF4030-141-120A-LF](#) [FC-SLF1810-901-LF](#) [FC-SCT1010-1:200T-40A](#) [FC-SCT1010-1:100T-40A](#) [FC-ALX 5030D-1R5MT](#) [FC-SCT1010-1:50T-40A](#) [FC-SCT1010-1:180T-40A](#) [FC-SCT1090-200T-50A](#) [FC-SCT1010-1:125T-40A](#) [FC-SCT1010-1:70T-40A](#) [FC-UU16-452-3.5A-LF](#) [FC-TSE050-5V-12V-T](#) [DEP17B-220M](#) [FC-HCM1190-R25-L](#) [FC-ST1390-R47M-50A-L](#) [DEP17A-100](#)