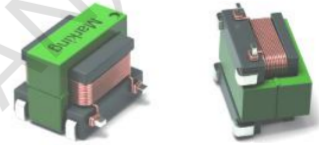
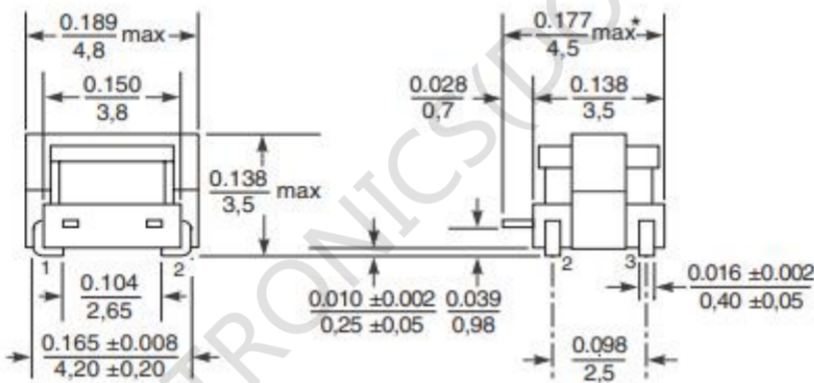


SCT 4.2 –Series Current Sense Transformers

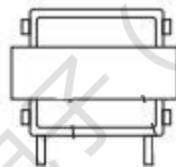
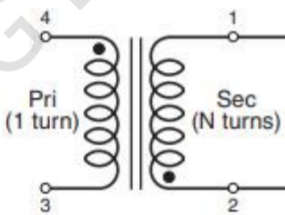
AEC-Q200 Grade 1 qualified (-40°C to +125°C ambient)
 Small surface mount current sensors
 Sensed current up to 20 A; Frequency range up to 1 MHz Very
 low primary DC resistance
 500 Vrms, one minute isolation (hipot) between windings
 Can also be used in 48 V vehicle electrical systems



1. Dimensions:mm

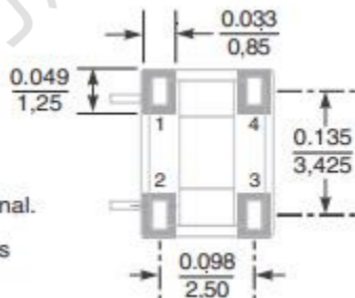


2.Schematic:



3. Recommended Land Pattern

Dimensions are in $\frac{\text{inches}}{\text{mm}}$



* Includes solder applied to side terminal.

Unless otherwise specified, tolerances are ± 0.004 in / 0,10 mm.

4. ELECTRIC CHARACTERISTICS

Electrical Specifications @ 25°C — Operating Temperature -40°C to +125°C

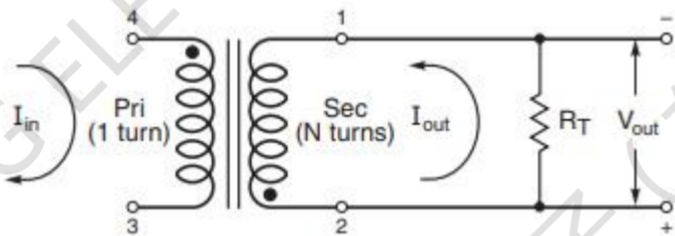
Part Number	Turns Ratio	Current Rating _{2 NP} (A)	Secondary Inductance (uH MIN)	DCR (Ω typ)		Hipot (V _{RMS})
				Primary (4-3)	Secondary (2-1)	Np-Ns
FC-SCT4.2-1:20	1:20	7	33	0.003	0.35	1500V
FC-SCT4.2-1:30	1:30	7	74	0.003	0.90	1500V
FC-SCT4.2-1:40	1:40	7	132	0.003	1.60	1500V
FC-SCT4.2-1:50	1:50	7	205	0.003	2.50	1500V
FC-SCT4.2-1:60	1:60	7	295	0.003	3.60	1500V
FC-SCT4.2-1:70	1:70	7	400	0.003	4.60	1500V
FC-SCT4.2-1:100	1:100	7	820	0.003	9.50	1500V
FC-SCT4.2-1:125	1:125	7	1280	0.003	13.0	1500V
FC-SCT4.2-1:150	1:150	7	1800	0.003	21.0	1500V

Inductance measured between secondary pins at 100 kHz, 0.1 Vrms,

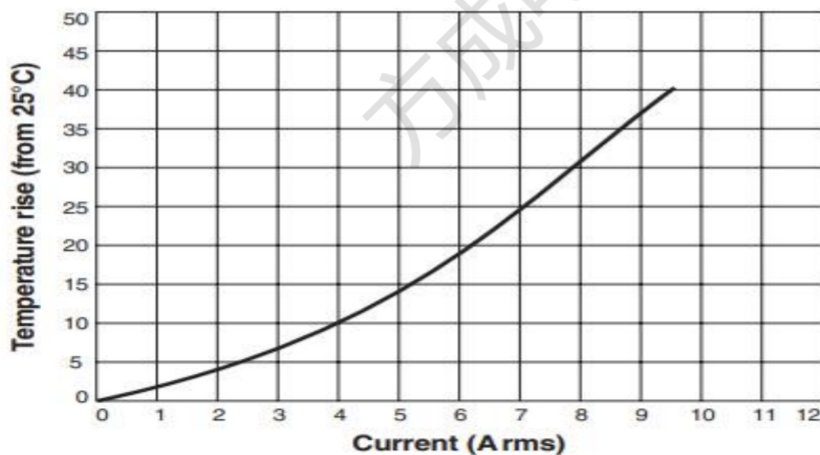
Ambient temperature -40°C to +125°C

Storage temperature Component: -40°C to +85°C

5. Typical Circuit



6. Temperature Rise vs Current



X-ON Electronics

Largest Supplier of Electrical and Electronic Components

Click to view similar products for [FANGCHENG manufacturer](#):

Other Similar products are found below :

[DLSF1010-12mH-L-S](#) [FC20100310](#) [FC20150210](#) [FC20330210](#) [FC20470210](#) [FC20680210](#) [FC-ACT25-50A-1000T-1T](#) [FC-CT9825-100T-40A](#) [FC-CT9825-200T-40A](#) [FC-DL2018D-5.0mH-20A-L](#) [FC-DLF1010-101B-LF](#) [FC-DLF1015-161B-LF](#) [FC-DLF4030-141-120A-LF](#) [FC-DLFH2520-102Y-LF](#) [FC-DLFH2520H-102Y-LF](#) [FC-DLSF1010-5mH-3.5A-L](#) [FC-DLSF2015W-30mH-1.5A-LF](#) [FC-DLSF2020L-30mH-1.5A-LF](#) [FC-DLSF2515-1.0mH/30A-L](#) [FC-DSL1212-L-10.0mH-3A](#) [FC-HLF2010H-50uH-20A-LF](#) [FC-HLF2018-15mH-10A-LF](#) [FC-HLF2018-5mH-25A-LF](#) [FC-LCM1513-301](#) [FC-LCM1513-551](#) [FC-LCM1513-701](#) [FC-LCM3225-102](#) [FC-LCM3225-421](#) [FC-LCM3225-501](#) [FC-LCM3225-701](#) [FC-LCM4532-102](#) [FC-LCM4532-152](#) [FC-LCM4532-421](#) [FC-LCM4532-701](#) [FC-LCM7060-132](#) [FC-LCM7060-501](#) [FC-LF1608-3.5mH-6.0A-L](#) [FC-LSFW4532-102S](#) [FC-SCM1040-150M-LF](#) [FC-SCT1010-1:125T-40A](#) [FC-SCT1010-1:150T-40A](#) [FC-SCT1010-1:180T-40A](#) [FC-SCT1010-1:200T-40A](#) [FC-SCT1010-1:50T-40A](#) [FC-SCT1010-1:70T-40A](#) [FC-SCT1090-100T-50A](#) [FC-SCT1090-200T-50A](#) [FC-SCT1090-300T-50A](#) [FC-SCT2010-100T](#) [FC-SCT2010-200T](#)