

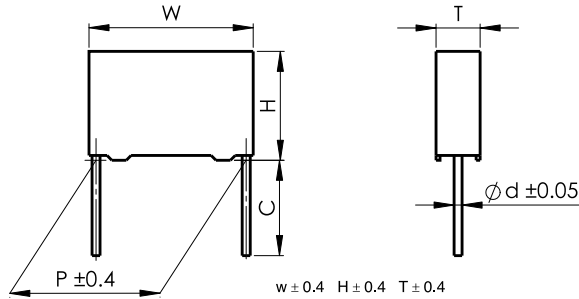


C82
MMKP82 series

塑料外壳双面金属化聚丙烯膜电容器

Double sided metallized polypropylene film capacitor (Box-type)

■ 外形图 Outline Drawing



■ 特点

- 双面金属化聚丙烯膜
- 损耗小，内部温升小
- 负电容量温度系数
- 优异的阻燃性能

■ 主要用途

- 广泛应用于高压高频脉冲电路中
- 电子镇流器和节能灯中
- 吸收和SCR整流电路

■ 技术要求 Specifications

■ Features

- Doublesided metallized polypropylene film
- Low loss and small inherent temperature rise
- Negative temperature coefficient of capacitance
- Excellent active and passive flame resistant abilities

■ Typical Applications

- Widely used in high voltage, high frequency and pulse circuit
- Electronic ballasts and compact lamps
- SNUBBER and SCR commutating circuits

| | | | | | | |
|--|---|--------------|--------|--------|--------|--------|
| 引用标准 Reference Standard | GB/T 10190(IEC 60384-16) | | | | | |
| 气候类别 Climatic Category | 40/105/56 | | | | | |
| 额定温度 Rated Temperature | 85°C for U_R (dc); 75°C for U_R (ac) | | | | | |
| 工作温度 Operating Temperature Range | -40°C ~ 105°C (+85°C to +105°C: decreasing factor 1.25% per °C for U_R (dc)) (+75°C to +105°C: decreasing factor 1.35% per °C for U_R (ac)) | | | | | |
| 额定电压 Rated Voltage | 250V, 400V, 630V, 1 000V, 1 600V, 2 000V | | | | | |
| 电容量范围 Capacitance Range | 0.00022μF ~ 3.9μF | | | | | |
| 电容量偏差 Capacitance Tolerance | ± 2%(G), ± 3%(H), ± 5%(J), ± 10%(K), ± 20%(M) | | | | | |
| 耐电压 Voltage Proof | 1.6 U_R (5s) | | | | | |
| 损耗角正切 Dissipation Factor | ≤ 10 × 10 ⁻⁴ (1kHz, 20°C) | | | | | |
| 绝缘电阻 Insulation Resistance | R ≥ 100 000MΩ, C_N ≤ 0.33μF R C_N ≥ 30 000, C_N > 0.33μF (20°C , 100V, 1min) | | | | | |
| 最大脉冲爬升速率 Maximum Pulse Rise Time(dV/dt): 若实际工作电压 U 比额定电压 U_R 低, 电容器可工作在更高的 dV/dt 场合, 这样 dv/dt 允许值应为右表值乘以 U_R/U 。 If the working voltage(U) is lower than the rated voltage(U_R), the capacitor can be worked at a higher dV/dt. In this case, the maximum allowed dV/dt is obtain by multiplying the right value with U_R/U . | U_R (V) | dV/dt (V/μs) | | | | |
| | | P=7.5 | P=10.0 | P=15.0 | P=22.5 | P=27.5 |
| | 250 | 1 200 | 1 000 | 550 | 250 | 200 |
| | 400 | 1 800 | 1 500 | 900 | 500 | 300 |
| | 630 | 3 200 | 3 200 | 2 500 | 1 500 | 900 |
| | 1 000 | 6 000 | 6 000 | 3 300 | 2 100 | 1 000 |
| 1 600 | --- | --- | 6 000 | 3 000 | 2 000 | |
| 2 000 | --- | --- | 10 000 | 5 000 | 2 200 | |

产品编码说明 Part number system

■ 18位产品代码如下：

The 18 digits part number is formed as follow:

| | | | | | | | | | | | | | | | | | |
|---|---|---|---|---|---|---|---|---|----|----|----|----|----|----|----|----|----|
| 1 | 2 | 3 | 4 | 5 | 6 | 7 | 8 | 9 | 10 | 11 | 12 | 13 | 14 | 15 | 16 | 17 | 18 |
| C | 8 | 2 | | | | | | | | | | | | | | | |

| | | | |
|---------|--|----------------|--|
| 第1~3位 | 型号代码 C82= MMKP82 | Digit 1 to 3 | Series code C82= MMKP82 |
| 第4~5位 | 直流额定电压 2E=250V 2G=400V 2J=630V 3A=1 000V 3C=1 600V 3D=2 000V | Digit 4 to 5 | D.C. rated voltage 2E=250V 2G=400V 2J=630V 3A=1 000V 3C=1 600V 3D=2 000V |
| 第6~8位 | 标称容量 举例：103=10 × 10 ³ pF=0.01μF | Digit 6 to 8 | Rated capacitance value For example: 103=10 × 10 ³ pF=0.01μF |
| 第9位 | 容量偏差 G= ± 2%,H = ± 3%,J= ± 5% K= ± 10%, M= ± 20% | Digit 9 | Capacitance tolerance G= ± 2%,H = ± 3%,J= ± 5% K= ± 10%, M= ± 20% |
| 第10位 | 引线脚距P 3=7.5mm 4=10.0mm 6=15.0mm 9=22.5mm B=27.5mm | Digit 10 | Pitch 3=7.5mm 4=10.0mm 6=15.0mm 9=22.5mm B=27.5mm |
| 第11位 | 内部特征码 | Digit 11 | Internal use |
| 第12~15位 | 引线加工和包装代码 | Digit 12 to 15 | Lead form and packaging code |
| 第16~18位 | 内部特征码 | Digit 16 to 18 | Internal use |

■ Table 1 引线加工和包装代码 lead form and packaging code

| 第 12 位 Digit 12 | | 第 13 位 Digit 13 | | 第 14 位 Digit 14 | | 第 15 位 Digit 15 | |
|-----------------|---|-----------------|---|-----------------|------------------|-----------------|--|
| 代码 Code | 说明 explanation | 代码 Code | 说明 explanation | 代码 Code | 说明 explanation | 代码 Code | 说明 explanation |
| A | 弹带包装 ammo-pack | 3 | F=7.5mm | 0 | 表示直脚 straight | 1 | 产品在连续的两个载带孔之间 each cap. among two consecutive holes P3=12.7mm,H=18.5mm (For pitch=7.5mm) |
| | | 4 6 | F=10.0mm F=15.0mm | | | 5 | P3=25.4mm;H=18.5mm (For pitch=10/15mm) (Detail parameter refer to pag 17) |
| C | 直脚 straight lead “C” in the figure above | 代码 Code | 说明 explanation | 0 | | 0 | 引线长度偏差 ± 0.5mm 或标准长度 Length tolerance ± 0.5mm Or standard length |
| | | 00 | 标准的引线长度 (18mm~26mm) standard lead length | | | | |
| | | 45 | 引线长度 4.5mm lead length 4.5mm | | | | |



■ 外形尺寸 Dimensions (mm)

| 250Vdc(180Vac) | | | | | | |
|------------------------|------|------|------|------|-----|-------------------|
| C _N (μF) | W | H | T | P | d | Part number |
| 0.0068 | 10.5 | 9.0 | 4.0 | 7.5 | 0.6 | C822E682-30****++ |
| 0.0082 | 10.5 | 9.0 | 4.0 | 7.5 | 0.6 | C822E822-30****++ |
| 0.010 | 10.5 | 9.0 | 4.0 | 7.5 | 0.6 | C822E103-30****++ |
| 0.012 | 10.5 | 9.0 | 4.0 | 7.5 | 0.6 | C822E123-30****++ |
| 0.015 | 10.5 | 9.0 | 4.0 | 7.5 | 0.6 | C822E153-30****++ |
| 0.018 | 10.5 | 9.0 | 4.0 | 7.5 | 0.6 | C822E183-30****++ |
| 0.022 | 10.5 | 9.0 | 4.0 | 7.5 | 0.6 | C822E223-30****++ |
| 0.027 | 10.5 | 11.0 | 5.0 | 7.5 | 0.6 | C822E273-30****++ |
| 0.033 | 10.5 | 11.0 | 5.0 | 7.5 | 0.6 | C822E333-30****++ |
| 0.039 | 10.5 | 12.0 | 6.0 | 7.5 | 0.6 | C822E393-30****++ |
| 0.047 | 10.5 | 12.0 | 6.0 | 7.5 | 0.6 | C822E473-30****++ |
| 0.027 | 13.0 | 9.0 | 4.0 | 10.0 | 0.6 | C822E273-40****++ |
| 0.033 | 13.0 | 9.0 | 4.0 | 10.0 | 0.6 | C822E333-40****++ |
| 0.039 | 13.0 | 9.0 | 4.0 | 10.0 | 0.6 | C822E393-40****++ |
| 0.047 | 13.0 | 11.0 | 5.0 | 10.0 | 0.6 | C822E473-40****++ |
| 0.056 | 13.0 | 11.0 | 5.0 | 10.0 | 0.6 | C822E563-40****++ |
| 0.068 | 13.0 | 12.0 | 6.0 | 10.0 | 0.6 | C822E683-40****++ |
| 0.082 | 13.0 | 12.0 | 6.0 | 10.0 | 0.6 | C822E823-40****++ |
| 0.068 | 17.5 | 11.0 | 5.0 | 15.0 | 0.8 | C822E683-60****++ |
| 0.082 | 17.5 | 11.0 | 5.0 | 15.0 | 0.8 | C822E823-60****++ |
| 0.10 | 17.5 | 11.0 | 5.0 | 15.0 | 0.8 | C822E104-60****++ |
| 0.12 | 17.5 | 12.0 | 6.0 | 15.0 | 0.8 | C822E124-60****++ |
| 0.15 | 17.5 | 12.0 | 6.0 | 15.0 | 0.8 | C822E154-60****++ |
| 0.18 | 17.5 | 13.5 | 7.5 | 15.0 | 0.8 | C822E184-60****++ |
| 0.22 | 17.5 | 13.5 | 7.5 | 15.0 | 0.8 | C822E224-60****++ |
| 0.27 | 17.5 | 14.5 | 8.5 | 15.0 | 0.8 | C822E274-60****++ |
| 0.33 | 17.5 | 16.0 | 10.0 | 15.0 | 0.8 | C822E334-60****++ |
| 0.39 | 17.5 | 16.0 | 10.0 | 15.0 | 0.8 | C822E394-60****++ |
| 0.22 | 26.5 | 15.0 | 6.0 | 22.5 | 0.8 | C822E224-90****++ |
| 0.27 | 26.5 | 15.0 | 6.0 | 22.5 | 0.8 | C822E274-90****++ |
| 0.33 | 26.5 | 15.0 | 6.0 | 22.5 | 0.8 | C822E334-90****++ |
| 0.39 | 26.5 | 16.0 | 7.0 | 22.5 | 0.8 | C822E394-90****++ |
| 0.47 | 26.5 | 16.0 | 7.0 | 22.5 | 0.8 | C822E474-90****++ |
| 0.56 | 26.5 | 17.0 | 8.5 | 22.5 | 0.8 | C822E564-90****++ |
| 0.68 | 26.5 | 18.5 | 10.0 | 22.5 | 0.8 | C822E684-90****++ |
| 0.82 | 26.5 | 18.5 | 10.0 | 22.5 | 0.8 | C822E824-90****++ |
| 1.0 | 26.5 | 22.0 | 12.0 | 22.5 | 0.8 | C822E105-90****++ |
| 0.82 | 32.0 | 18.0 | 9.0 | 27.5 | 0.8 | C822E824-B0****++ |
| 1.0 | 32.0 | 20.0 | 11.0 | 27.5 | 0.8 | C822E105-B0****++ |
| 1.2 | 32.0 | 20.0 | 11.0 | 27.5 | 0.8 | C822E125-B0****++ |
| 1.5 | 32.0 | 22.0 | 13.0 | 27.5 | 0.8 | C822E155-B0****++ |
| 1.8 | 32.0 | 24.5 | 15.0 | 27.5 | 0.8 | C822E185-B0****++ |
| 2.2 | 32.0 | 24.5 | 15.0 | 27.5 | 0.8 | C822E225-B0****++ |
| 2.7 | 32.0 | 33.0 | 18.0 | 27.5 | 0.8 | C822E275-B0****++ |
| 3.3 | 32.0 | 33.0 | 18.0 | 27.5 | 0.8 | C822E335-B0****++ |
| 3.9 | 32.0 | 33.0 | 18.0 | 27.5 | 0.8 | C822E395-B0****++ |

| 400Vdc(250Vac) [@] | | | | | | |
|-----------------------------|------|------|------|------|-----|-------------------|
| C _N (μF) | W | H | T | P | d | Part number |
| 0.0027 | 10.5 | 9.0 | 4.0 | 7.5 | 0.6 | C822G272-30****++ |
| 0.0033 | 10.5 | 9.0 | 4.0 | 7.5 | 0.6 | C822G332-30****++ |
| 0.0039 | 10.5 | 9.0 | 4.0 | 7.5 | 0.6 | C822G392-30****++ |
| 0.0047 | 10.5 | 9.0 | 4.0 | 7.5 | 0.6 | C822G472-30****++ |
| 0.0056 | 10.5 | 9.0 | 4.0 | 7.5 | 0.6 | C822G562-30****++ |
| 0.0068 | 10.5 | 9.0 | 4.0 | 7.5 | 0.6 | C822G682-30****++ |
| 0.0082 | 10.5 | 9.0 | 4.0 | 7.5 | 0.6 | C822G822-30****++ |
| 0.010 | 10.5 | 9.0 | 4.0 | 7.5 | 0.6 | C822G103-30****++ |
| 0.012 | 10.5 | 9.0 | 4.0 | 7.5 | 0.6 | C822G123-30****++ |
| 0.015 | 10.5 | 11.0 | 5.0 | 7.5 | 0.6 | C822G153-30****++ |
| 0.018 | 10.5 | 11.0 | 5.0 | 7.5 | 0.6 | C822G183-30****++ |
| 0.022 | 10.5 | 12.0 | 6.0 | 7.5 | 0.6 | C822G223-30****++ |
| 0.027 | 10.5 | 12.0 | 6.0 | 7.5 | 0.6 | C822G273-30****++ |
| 0.010 | 13.0 | 9.0 | 4.0 | 10.0 | 0.6 | C822G103-40****++ |
| 0.012 | 13.0 | 9.0 | 4.0 | 10.0 | 0.6 | C822G123-40****++ |
| 0.015 | 13.0 | 9.0 | 4.0 | 10.0 | 0.6 | C822G153-40****++ |
| 0.018 | 13.0 | 9.0 | 4.0 | 10.0 | 0.6 | C822G183-40****++ |
| 0.022 | 13.0 | 9.0 | 4.0 | 10.0 | 0.6 | C822G223-40****++ |
| 0.027 | 13.0 | 11.0 | 5.0 | 10.0 | 0.6 | C822G273-40****++ |
| 0.033 | 13.0 | 11.0 | 5.0 | 10.0 | 0.6 | C822G333-40****++ |
| 0.039 | 13.0 | 12.0 | 6.0 | 10.0 | 0.6 | C822G393-40****++ |
| 0.047 | 13.0 | 12.0 | 6.0 | 10.0 | 0.6 | C822G473-40****++ |
| 0.033 | 17.5 | 11.0 | 5.0 | 15.0 | 0.8 | C822G333-60****++ |
| 0.039 | 17.5 | 11.0 | 5.0 | 15.0 | 0.8 | C822G393-60****++ |
| 0.047 | 17.5 | 11.0 | 5.0 | 15.0 | 0.8 | C822G473-60****++ |
| 0.056 | 17.5 | 11.0 | 5.0 | 15.0 | 0.8 | C822G563-60****++ |
| 0.068 | 17.5 | 12.0 | 6.0 | 15.0 | 0.8 | C822G683-60****++ |
| 0.082 | 17.5 | 12.0 | 6.0 | 15.0 | 0.8 | C822G823-60****++ |
| 0.10 | 17.5 | 13.5 | 7.5 | 15.0 | 0.8 | C822G104-60****++ |
| 0.12 | 17.5 | 13.5 | 7.5 | 15.0 | 0.8 | C822G124-60****++ |
| 0.15 | 17.5 | 14.5 | 8.5 | 15.0 | 0.8 | C822G154-60****++ |
| 0.18 | 17.5 | 16.0 | 10.0 | 15.0 | 0.8 | C822G184-60****++ |
| 0.22 | 17.5 | 16.0 | 10.0 | 15.0 | 0.8 | C822G224-60****++ |
| 0.27 | 17.5 | 19.0 | 11.0 | 15.0 | 0.8 | C822G274-60****++ |
| 0.12 | 26.5 | 15.0 | 6.0 | 22.5 | 0.8 | C822G124-90****++ |
| 0.15 | 26.5 | 15.0 | 6.0 | 22.5 | 0.8 | C822G154-90****++ |
| 0.18 | 26.5 | 15.0 | 6.0 | 22.5 | 0.8 | C822G184-90****++ |
| 0.22 | 26.5 | 16.0 | 7.0 | 22.5 | 0.8 | C822G224-90****++ |
| 0.27 | 26.5 | 17.0 | 8.5 | 22.5 | 0.8 | C822G274-90****++ |
| 0.33 | 26.5 | 17.0 | 8.5 | 22.5 | 0.8 | C822G334-90****++ |
| 0.39 | 26.5 | 18.5 | 10.0 | 22.5 | 0.8 | C822G394-90****++ |
| 0.47 | 26.5 | 18.5 | 10.0 | 22.5 | 0.8 | C822G474-90****++ |
| 0.56 | 26.5 | 22.0 | 12.0 | 22.5 | 0.8 | C822G564-90****++ |
| 0.68 | 26.5 | 22.0 | 12.0 | 22.5 | 0.8 | C822G684-90****++ |
| 0.39 | 32.0 | 18.0 | 9.0 | 27.5 | 0.8 | C822G394-B0****++ |
| 0.47 | 32.0 | 18.0 | 9.0 | 27.5 | 0.8 | C822G474-B0****++ |
| 0.56 | 32.0 | 20.0 | 11.0 | 27.5 | 0.8 | C822G564-B0****++ |
| 0.68 | 32.0 | 20.0 | 11.0 | 27.5 | 0.8 | C822G684-B0****++ |
| 0.82 | 32.0 | 22.0 | 13.0 | 27.5 | 0.8 | C822G824-B0****++ |
| 1.0 | 32.0 | 24.5 | 15.0 | 27.5 | 0.8 | C822G105-B0****++ |
| 1.2 | 32.0 | 24.5 | 15.0 | 27.5 | 0.8 | C822G125-B0****++ |
| 1.5 | 32.0 | 33.0 | 18.0 | 27.5 | 0.8 | C822G155-B0****++ |
| 1.8 | 32.0 | 33.0 | 18.0 | 27.5 | 0.8 | C822G185-B0****++ |

备注: 1. “-”表示容量偏差。“-”=capacitance tolerance code, M=±20%,K=±10%,J=±5%,H=±3%,G=±2%
 2. “****”表示引线加工和包装代码(见表1)。“****”=lead form and packing code (refer to table 1)
 3. “@”不用作跨线,请参见抗干扰电容器(Pag.109)
 “@” Not suitable for across-the-line applications. Pls refer to Interference Suppression Capacitors(Pag.109)

■ 外形尺寸 Dimensions (mm)

| 630Vdc(400Vac) | | | | | | |
|------------------------|------|------|-----|------|-----|--------------------|
| C _N (μF) | W | H | T | P | d | Part number |
| 0.00068 | 10.5 | 9.0 | 4.0 | 7.5 | 0.6 | C822J681-30****+++ |
| 0.00082 | 10.5 | 9.0 | 4.0 | 7.5 | 0.6 | C822J821-30****+++ |
| 0.0010 | 10.5 | 9.0 | 4.0 | 7.5 | 0.6 | C822J102-30****+++ |
| 0.0012 | 10.5 | 9.0 | 4.0 | 7.5 | 0.6 | C822J122-30****+++ |
| 0.0015 | 10.5 | 9.0 | 4.0 | 7.5 | 0.6 | C822J152-30****+++ |
| 0.0018 | 10.5 | 9.0 | 4.0 | 7.5 | 0.6 | C822J182-30****+++ |
| 0.0022 | 10.5 | 9.0 | 4.0 | 7.5 | 0.6 | C822J222-30****+++ |
| 0.0027 | 10.5 | 9.0 | 4.0 | 7.5 | 0.6 | C822J272-30****+++ |
| 0.0033 | 10.5 | 9.0 | 4.0 | 7.5 | 0.6 | C822J332-30****+++ |
| 0.0039 | 10.5 | 9.0 | 4.0 | 7.5 | 0.6 | C822J392-30****+++ |
| 0.0047 | 10.5 | 9.0 | 4.0 | 7.5 | 0.6 | C822J472-30****+++ |
| 0.0056 | 10.5 | 9.0 | 4.0 | 7.5 | 0.6 | C822J562-30****+++ |
| 0.0068 | 10.5 | 11.0 | 5.0 | 7.5 | 0.6 | C822J682-30****+++ |
| 0.0082 | 10.5 | 11.0 | 5.0 | 7.5 | 0.6 | C822J822-30****+++ |
| 0.010 | 10.5 | 12.0 | 6.0 | 7.5 | 0.6 | C822J103-30****+++ |
| 0.012 | 10.5 | 12.0 | 6.0 | 7.5 | 0.6 | C822J123-30****+++ |
| 0.0039 | 13.0 | 9.0 | 4.0 | 10.0 | 0.6 | C822J392-40****+++ |
| 0.0047 | 13.0 | 9.0 | 4.0 | 10.0 | 0.6 | C822J472-40****+++ |
| 0.0056 | 13.0 | 9.0 | 4.0 | 10.0 | 0.6 | C822J562-40****+++ |
| 0.0068 | 13.0 | 9.0 | 4.0 | 10.0 | 0.6 | C822J682-40****+++ |
| 0.0082 | 13.0 | 9.0 | 4.0 | 10.0 | 0.6 | C822J822-40****+++ |
| 0.010 | 13.0 | 11.0 | 5.0 | 10.0 | 0.6 | C822J103-40****+++ |
| 0.012 | 13.0 | 11.0 | 5.0 | 10.0 | 0.6 | C822J123-40****+++ |
| 0.015 | 13.0 | 12.0 | 6.0 | 10.0 | 0.6 | C822J153-40****+++ |
| 0.018 | 13.0 | 12.0 | 6.0 | 10.0 | 0.6 | C822J183-40****+++ |
| 0.010 | 17.5 | 11.0 | 5.0 | 15.0 | 0.8 | C822J103-60****+++ |
| 0.012 | 17.5 | 11.0 | 5.0 | 15.0 | 0.8 | C822J123-60****+++ |
| 0.015 | 17.5 | 11.0 | 5.0 | 15.0 | 0.8 | C822J153-60****+++ |
| 0.018 | 17.5 | 11.0 | 5.0 | 15.0 | 0.8 | C822J183-60****+++ |
| 0.022 | 17.5 | 11.0 | 5.0 | 15.0 | 0.8 | C822J223-60****+++ |
| 0.027 | 17.5 | 11.0 | 5.0 | 15.0 | 0.8 | C822J273-60****+++ |
| 0.033 | 17.5 | 12.0 | 6.0 | 15.0 | 0.8 | C822J333-60****+++ |

| 630Vdc(400Vac) | | | | | | |
|------------------------|------|------|------|------|-----|--------------------|
| C _N (μF) | W | H | T | P | d | Part number |
| 0.039 | 17.5 | 12.0 | 6.0 | 15.0 | 0.8 | C822J393-60****+++ |
| 0.047 | 17.5 | 12.0 | 6.0 | 15.0 | 0.8 | C822J473-60****+++ |
| 0.056 | 17.5 | 13.5 | 7.5 | 15.0 | 0.8 | C822J563-60****+++ |
| 0.068 | 17.5 | 14.5 | 8.5 | 15.0 | 0.8 | C822J683-60****+++ |
| 0.082 | 17.5 | 14.5 | 8.5 | 15.0 | 0.8 | C822J823-60****+++ |
| 0.10 | 17.5 | 16.0 | 10.0 | 15.0 | 0.8 | C822J104-60****+++ |
| 0.12 | 17.5 | 19.0 | 11.0 | 15.0 | 0.8 | C822J124-60****+++ |
| 0.047 | 26.5 | 15.0 | 6.0 | 22.5 | 0.8 | C822J473-90****+++ |
| 0.056 | 26.5 | 15.0 | 6.0 | 22.5 | 0.8 | C822J563-90****+++ |
| 0.068 | 26.5 | 15.0 | 6.0 | 22.5 | 0.8 | C822J683-90****+++ |
| 0.082 | 26.5 | 15.0 | 6.0 | 22.5 | 0.8 | C822J823-90****+++ |
| 0.10 | 26.5 | 15.0 | 6.0 | 22.5 | 0.8 | C822J104-90****+++ |
| 0.12 | 26.5 | 16.0 | 7.0 | 22.5 | 0.8 | C822J124-90****+++ |
| 0.15 | 26.5 | 17.0 | 8.5 | 22.5 | 0.8 | C822J154-90****+++ |
| 0.18 | 26.5 | 17.0 | 8.5 | 22.5 | 0.8 | C822J184-90****+++ |
| 0.22 | 26.5 | 18.5 | 10.0 | 22.5 | 0.8 | C822J224-90****+++ |
| 0.27 | 26.5 | 22.0 | 12.0 | 22.5 | 0.8 | C822J274-90****+++ |
| 0.33 | 26.5 | 22.0 | 12.0 | 22.5 | 0.8 | C822J334-90****+++ |
| 0.39 | 26.5 | 22.0 | 12.0 | 22.5 | 0.8 | C822J394-90****+++ |
| 0.15 | 32.0 | 18.0 | 9.0 | 27.5 | 0.8 | C822J154-B0****+++ |
| 0.18 | 32.0 | 18.0 | 9.0 | 27.5 | 0.8 | C822J184-B0****+++ |
| 0.22 | 32.0 | 18.0 | 9.0 | 27.5 | 0.8 | C822J224-B0****+++ |
| 0.27 | 32.0 | 18.0 | 9.0 | 27.5 | 0.8 | C822J274-B0****+++ |
| 0.33 | 32.0 | 20.0 | 11.0 | 27.5 | 0.8 | C822J334-B0****+++ |
| 0.39 | 32.0 | 20.0 | 11.0 | 27.5 | 0.8 | C822J394-B0****+++ |
| 0.47 | 32.0 | 22.0 | 13.0 | 27.5 | 0.8 | C822J474-B0****+++ |
| 0.56 | 32.0 | 22.0 | 13.0 | 27.5 | 0.8 | C822J564-B0****+++ |
| 0.68 | 32.0 | 24.5 | 15.0 | 27.5 | 0.8 | C822J684-B0****+++ |
| 0.82 | 32.0 | 28.0 | 14.0 | 27.5 | 0.8 | C822J824-B0****+++ |
| 1.0 | 32.0 | 33.0 | 18.0 | 27.5 | 0.8 | C822J105-B0****+++ |
| 1.2 | 32.0 | 33.0 | 18.0 | 27.5 | 0.8 | C822J125-B0****+++ |

备注: 1. “-”表示容量偏差。 “-”=capacitance tolerance code, M=±20%,K=±10%,J=±5%,H=±3%,G=±2%
2. “****”表示引线加工和包装代码(见table 1)。“****”=lead form and packing code(refer to table 1)



C82
MMKP82 series

■ 外形尺寸 Dimensions (mm)

| 1 000Vdc(600Vac) | | | | | | |
|------------------------|------|------|------|------|-----|-------------------|
| C _N (μF) | W | H | T | P | d | Part number |
| 0.00047 | 10.5 | 9.0 | 4.0 | 7.5 | 0.6 | C823A471-30****++ |
| 0.00056 | 10.5 | 9.0 | 4.0 | 7.5 | 0.6 | C823A561-30****++ |
| 0.00068 | 10.5 | 9.0 | 4.0 | 7.5 | 0.6 | C823A681-30****++ |
| 0.00082 | 10.5 | 9.0 | 4.0 | 7.5 | 0.6 | C823A821-30****++ |
| 0.0010 | 10.5 | 9.0 | 4.0 | 7.5 | 0.6 | C823A102-30****++ |
| 0.0012 | 10.5 | 11.0 | 5.0 | 7.5 | 0.6 | C823A122-30****++ |
| 0.0015 | 10.5 | 11.0 | 5.0 | 7.5 | 0.6 | C823A152-30****++ |
| 0.0018 | 10.5 | 11.0 | 5.0 | 7.5 | 0.6 | C823A182-30****++ |
| 0.0022 | 10.5 | 11.0 | 5.0 | 7.5 | 0.6 | C823A222-30****++ |
| 0.0027 | 10.5 | 12.0 | 6.0 | 7.5 | 0.6 | C823A272-30****++ |
| 0.0033 | 10.5 | 12.0 | 6.0 | 7.5 | 0.6 | C823A332-30****++ |
| 0.0010 | 13.0 | 9.0 | 4.0 | 10.0 | 0.6 | C823A102-40****++ |
| 0.0012 | 13.0 | 9.0 | 4.0 | 10.0 | 0.6 | C823A122-40****++ |
| 0.0015 | 13.0 | 9.0 | 4.0 | 10.0 | 0.6 | C823A152-40****++ |
| 0.0018 | 13.0 | 9.0 | 4.0 | 10.0 | 0.6 | C823A182-40****++ |
| 0.0022 | 13.0 | 9.0 | 4.0 | 10.0 | 0.6 | C823A222-40****++ |
| 0.0027 | 13.0 | 9.0 | 4.0 | 10.0 | 0.6 | C823A272-40****++ |
| 0.0033 | 13.0 | 9.0 | 4.0 | 10.0 | 0.6 | C823A332-40****++ |
| 0.0039 | 13.0 | 11.0 | 5.0 | 10.0 | 0.6 | C823A392-40****++ |
| 0.0047 | 13.0 | 11.0 | 5.0 | 10.0 | 0.6 | C823A472-40****++ |
| 0.0056 | 13.0 | 12.0 | 6.0 | 10.0 | 0.6 | C823A562-40****++ |
| 0.0068 | 13.0 | 12.0 | 6.0 | 10.0 | 0.6 | C823A682-40****++ |
| 0.0082 | 17.5 | 11.0 | 5.0 | 15.0 | 0.8 | C823A822-60****++ |
| 0.010 | 17.5 | 11.0 | 5.0 | 15.0 | 0.8 | C823A103-60****++ |
| 0.012 | 17.5 | 11.0 | 5.0 | 15.0 | 0.8 | C823A123-60****++ |
| 0.015 | 17.5 | 11.0 | 5.0 | 15.0 | 0.8 | C823A153-60****++ |
| 0.018 | 17.5 | 13.5 | 7.5 | 15.0 | 0.8 | C823A183-60****++ |
| 0.022 | 17.5 | 13.5 | 7.5 | 15.0 | 0.8 | C823A223-60****++ |
| 0.027 | 17.5 | 14.5 | 8.5 | 15.0 | 0.8 | C823A273-60****++ |
| 0.033 | 17.5 | 14.5 | 8.5 | 15.0 | 0.8 | C823A333-60****++ |
| 0.039 | 17.5 | 16.0 | 10.0 | 15.0 | 0.8 | C823A393-60****++ |
| 0.047 | 17.5 | 19.0 | 11.0 | 15.0 | 0.8 | C823A473-60****++ |
| 0.027 | 26.5 | 15.0 | 6.0 | 22.5 | 0.8 | C823A273-90****++ |
| 0.033 | 26.5 | 15.0 | 6.0 | 22.5 | 0.8 | C823A333-90****++ |
| 0.039 | 26.5 | 15.0 | 6.0 | 22.5 | 0.8 | C823A393-90****++ |
| 0.047 | 26.5 | 16.0 | 7.0 | 22.5 | 0.8 | C823A473-90****++ |
| 0.056 | 26.5 | 16.0 | 7.0 | 22.5 | 0.8 | C823A563-90****++ |
| 0.068 | 26.5 | 17.0 | 8.5 | 22.5 | 0.8 | C823A683-90****++ |
| 0.082 | 26.5 | 18.5 | 10.0 | 22.5 | 0.8 | C823A823-90****++ |
| 0.10 | 26.5 | 18.5 | 10.0 | 22.5 | 0.8 | C823A104-90****++ |
| 0.12 | 26.5 | 22.0 | 12.0 | 22.5 | 0.8 | C823A124-90****++ |
| 0.15 | 26.5 | 22.0 | 12.0 | 22.5 | 0.8 | C823A154-90****++ |
| 0.10 | 32.0 | 18.0 | 9.0 | 27.5 | 0.8 | C823A104-B0****++ |
| 0.12 | 32.0 | 20.0 | 11.0 | 27.5 | 0.8 | C823A124-B0****++ |
| 0.15 | 32.0 | 20.0 | 11.0 | 27.5 | 0.8 | C823A154-B0****++ |
| 0.18 | 32.0 | 22.0 | 13.0 | 27.5 | 0.8 | C823A184-B0****++ |
| 0.22 | 32.0 | 22.0 | 13.0 | 27.5 | 0.8 | C823A224-B0****++ |
| 0.27 | 32.0 | 24.5 | 15.0 | 27.5 | 0.8 | C823A274-B0****++ |
| 0.33 | 32.0 | 28.0 | 14.0 | 27.5 | 0.8 | C823A334-B0****++ |
| 0.39 | 32.0 | 33.0 | 18.0 | 27.5 | 0.8 | C823A394-B0****++ |
| 0.47 | 32.0 | 33.0 | 18.0 | 27.5 | 0.8 | C823A474-B0****++ |

| 1 600Vdc(650Vac) | | | | | | |
|------------------------|------|------|------|------|-----|-------------------|
| C _N (μF) | W | H | T | P | d | Part number |
| 0.00068 | 17.5 | 11.0 | 5.0 | 15.0 | 0.8 | C823C681-60****++ |
| 0.00082 | 17.5 | 11.0 | 5.0 | 15.0 | 0.8 | C823C821-60****++ |
| 0.0010 | 17.5 | 11.0 | 5.0 | 15.0 | 0.8 | C823C102-60****++ |
| 0.0012 | 17.5 | 11.0 | 5.0 | 15.0 | 0.8 | C823C122-60****++ |
| 0.0015 | 17.5 | 11.0 | 5.0 | 15.0 | 0.8 | C823C152-60****++ |
| 0.0018 | 17.5 | 11.0 | 5.0 | 15.0 | 0.8 | C823C182-60****++ |
| 0.0022 | 17.5 | 11.0 | 5.0 | 15.0 | 0.8 | C823C222-60****++ |
| 0.0027 | 17.5 | 11.0 | 5.0 | 15.0 | 0.8 | C823C272-60****++ |
| 0.0033 | 17.5 | 11.0 | 5.0 | 15.0 | 0.8 | C823C332-60****++ |
| 0.0039 | 17.5 | 11.0 | 5.0 | 15.0 | 0.8 | C823C392-60****++ |
| 0.0047 | 17.5 | 11.0 | 5.0 | 15.0 | 0.8 | C823C472-60****++ |
| 0.0056 | 17.5 | 11.0 | 5.0 | 15.0 | 0.8 | C823C562-60****++ |
| 0.0068 | 17.5 | 11.0 | 5.0 | 15.0 | 0.8 | C823C682-60****++ |
| 0.0082 | 17.5 | 12.0 | 6.0 | 15.0 | 0.8 | C823C822-60****++ |
| 0.010 | 17.5 | 12.0 | 6.0 | 15.0 | 0.8 | C823C103-60****++ |
| 0.012 | 17.5 | 13.5 | 7.5 | 15.0 | 0.8 | C823C123-60****++ |
| 0.015 | 17.5 | 13.5 | 7.5 | 15.0 | 0.8 | C823C153-60****++ |
| 0.018 | 17.5 | 14.5 | 8.5 | 15.0 | 0.8 | C823C183-60****++ |
| 0.022 | 17.5 | 14.5 | 8.5 | 15.0 | 0.8 | C823C223-60****++ |
| 0.027 | 17.5 | 16.0 | 10.0 | 15.0 | 0.8 | C823C273-60****++ |
| 0.033 | 17.5 | 19.0 | 11.0 | 15.0 | 0.8 | C823C333-60****++ |
| 0.015 | 26.5 | 15.0 | 6.0 | 22.5 | 0.8 | C823C153-90****++ |
| 0.018 | 26.5 | 15.0 | 6.0 | 22.5 | 0.8 | C823C183-90****++ |
| 0.022 | 26.5 | 15.0 | 6.0 | 22.5 | 0.8 | C823C223-90****++ |
| 0.027 | 26.5 | 15.0 | 6.0 | 22.5 | 0.8 | C823C273-90****++ |
| 0.033 | 26.5 | 16.0 | 7.0 | 22.5 | 0.8 | C823C333-90****++ |
| 0.039 | 26.5 | 17.0 | 8.5 | 22.5 | 0.8 | C823C393-90****++ |
| 0.047 | 26.5 | 18.5 | 10.0 | 22.5 | 0.8 | C823C473-90****++ |
| 0.056 | 26.5 | 18.5 | 10.0 | 22.5 | 0.8 | C823C563-90****++ |
| 0.068 | 26.5 | 22.0 | 12.0 | 22.5 | 0.8 | C823C683-90****++ |
| 0.082 | 26.5 | 22.0 | 12.0 | 22.5 | 0.8 | C823C823-90****++ |
| 0.039 | 32.0 | 18.0 | 9.0 | 27.5 | 0.8 | C823C393-B0****++ |
| 0.047 | 32.0 | 18.0 | 9.0 | 27.5 | 0.8 | C823C473-B0****++ |
| 0.056 | 32.0 | 18.0 | 9.0 | 27.5 | 0.8 | C823C563-B0****++ |
| 0.068 | 32.0 | 18.0 | 9.0 | 27.5 | 0.8 | C823C683-B0****++ |
| 0.082 | 32.0 | 20.0 | 11.0 | 27.5 | 0.8 | C823C823-B0****++ |
| 0.10 | 32.0 | 20.0 | 11.0 | 27.5 | 0.8 | C823C104-B0****++ |
| 0.12 | 32.0 | 22.0 | 13.0 | 27.5 | 0.8 | C823C124-B0****++ |
| 0.15 | 32.0 | 24.5 | 15.0 | 27.5 | 0.8 | C823C154-B0****++ |
| 0.18 | 32.0 | 24.5 | 15.0 | 27.5 | 0.8 | C823C184-B0****++ |
| 0.22 | 32.0 | 33.0 | 18.0 | 27.5 | 0.8 | C823C224-B0****++ |
| 0.27 | 32.0 | 33.0 | 18.0 | 27.5 | 0.8 | C823C274-B0****++ |
| 0.33 | 32.0 | 33.0 | 18.0 | 27.5 | 0.8 | C823C334-B0****++ |

| 2 000Vdc(700Vac) | | | | | | |
|------------------------|------|------|------|------|-----|-------------------|
| C _N (μF) | W | H | T | P | d | Part number |
| 0.00022 | 17.5 | 11.0 | 5.0 | 15.0 | 0.8 | C823D221-60****++ |
| 0.00027 | 17.5 | 11.0 | 5.0 | 15.0 | 0.8 | C823D271-60****++ |
| 0.00033 | 17.5 | 11.0 | 5.0 | 15.0 | 0.8 | C823D331-60****++ |
| 0.00039 | 17.5 | 11.0 | 5.0 | 15.0 | 0.8 | C823D391-60****++ |
| 0.00047 | 17.5 | 11.0 | 5.0 | 15.0 | 0.8 | C823D471-60****++ |
| 0.00056 | 17.5 | 11.0 | 5.0 | 15.0 | 0.8 | C823D561-60****++ |
| 0.00068 | 17.5 | 11.0 | 5.0 | 15.0 | 0.8 | C823D681-60****++ |
| 0.00082 | 17.5 | 11.0 | 5.0 | 15.0 | 0.8 | C823D821-60****++ |
| 0.0010 | 17.5 | 11.0 | 5.0 | 15.0 | 0.8 | C823D102-60****++ |
| 0.0012 | 17.5 | 11.0 | 5.0 | 15.0 | 0.8 | C823D122-60****++ |
| 0.0015 | 17.5 | 11.0 | 5.0 | 15.0 | 0.8 | C823D152-60****++ |
| 0.0018 | 17.5 | 11.0 | 5.0 | 15.0 | 0.8 | C823D182-60****++ |
| 0.0022 | 17.5 | 11.0 | 5.0 | 15.0 | 0.8 | C823D222-60****++ |
| 0.0027 | 17.5 | 11.0 | 5.0 | 15.0 | 0.8 | C823D272-60****++ |
| 0.0033 | 17.5 | 12.0 | 6.0 | 15.0 | 0.8 | C823D332-60****++ |
| 0.0039 | 17.5 | 12.0 | 6.0 | 15.0 | 0.8 | C823D392-60****++ |
| 0.0047 | 17.5 | 12.0 | 6.0 | 15.0 | 0.8 | C823D472-60****++ |
| 0.0056 | 17.5 | 13.5 | 7.5 | 15.0 | 0.8 | C823D562-60****++ |
| 0.0068 | 17.5 | 13.5 | 7.5 | 15.0 | 0.8 | C823D682-60****++ |
| 0.0082 | 17.5 | 14.5 | 8.5 | 15.0 | 0.8 | C823D822-60****++ |
| 0.010 | 17.5 | 16.0 | 10.0 | 15.0 | 0.8 | C823D103-60****++ |
| 0.012 | 17.5 | 16.0 | 10.0 | 15.0 | 0.8 | C823D123-60****++ |
| 0.015 | 17.5 | 19.0 | 11.0 | 15.0 | 0.8 | C823D153-60****++ |
| 0.0010 | 26.5 | 15.0 | 6.0 | 22.5 | 0.8 | C823D102-90****++ |
| 0.0012 | 26.5 | 15.0 | 6.0 | 22.5 | 0.8 | C823D122-90****++ |
| 0.0015 | 26.5 | 15.0 | 6.0 | 22.5 | 0.8 | C823D152-90****++ |
| 0.0018 | 26.5 | 15.0 | 6.0 | 22.5 | 0.8 | C823D182-90****++ |
| 0.0022 | 26.5 | 15.0 | 6.0 | 22.5 | 0.8 | C823D222-90****++ |
| 0.0027 | 26.5 | 15.0 | 6.0 | 22.5 | 0.8 | C823D272-90****++ |
| 0.0033 | 26.5 | 15.0 | 6.0 | 22.5 | 0.8 | C823D332-90****++ |
| 0.0039 | 26.5 | 15.0 | 6.0 | 22.5 | 0.8 | C823D392-90****++ |
| 0.0047 | 26.5 | 15.0 | 6.0 | 22.5 | 0.8 | C823D472-90****++ |
| 0.0056 | 26.5 | 15.0 | 6.0 | 22.5 | 0.8 | C823D562-90****++ |
| 0.0068 | 26.5 | 15.0 | 6.0 | 22.5 | 0.8 | C823D682-90****++ |
| 0.0082 | 26.5 | 15.0 | 6.0 | 22.5 | 0.8 | C823D822-90****++ |
| 0.010 | 26.5 | 15.0 | 6.0 | 22.5 | 0.8 | C823D103-90****++ |
| 0.012 | 26.5 | 15.0 | 6.0 | 22.5 | 0.8 | C823D123-90****++ |
| 0.015 | 26.5 | 16.0 | 7.0 | 22.5 | 0.8 | C823D153-90****++ |
| 0.018 | 26.5 | 16.0 | 7.0 | 22.5 | 0.8 | C823D183-90****++ |
| 0.022 | 26.5 | 17.0 | 8.5 | 22.5 | 0.8 | C823D223-90****++ |
| 0.027 | 26.5 | 18.5 | 10.0 | 22.5 | 0.8 | C823D273-90****++ |
| 0.033 | 26.5 | 18.5 | 10.0 | 22.5 | 0.8 | C823D333-90****++ |
| 0.039 | 26.5 | 22.0 | 12.0 | 22.5 | 0.8 | C823D393-90****++ |
| 0.047 | 26.5 | 22.0 | 12.0 | 22.5 | 0.8 | C823D473-90****++ |
| 0.022 | 32.0 | 18.0 | 9.0 | 27.5 | 0.8 | C823D223-B0****++ |
| 0.027 | 32.0 | 18.0 | 9.0 | 27.5 | 0.8 | C823D273-B0****++ |
| 0.033 | 32.0 | 18.0 | 9.0 | 27.5 | 0.8 | C823D333-B0****++ |
| 0.039 | 32.0 | 20.0 | 11.0 | 27.5 | 0.8 | C823D393-B0****++ |
| 0.047 | 32.0 | 20.0 | 11.0 | 27.5 | 0.8 | C823D473-B0****++ |
| 0.056 | 32.0 | 22.0 | 13.0 | 27.5 | 0.8 | C823D563-B0****++ |
| 0.068 | 32.0 | 22.0 | 13.0 | 27.5 | 0.8 | C823D683-B0****++ |
| 0.082 | 32.0 | 24.5 | 15.0 | 27.5 | 0.8 | C823D823-B0****++ |
| 0.10 | 32.0 | 28.0 | 14.0 | 27.5 | 0.8 | C823D104-B0****++ |
| 0.12 | 32.0 | 33.0 | 18.0 | 27.5 | 0.8 | C823D124-B0****++ |
| 0.15 | 32.0 | 33.0 | 18.0 | 27.5 | 0.8 | C823D154-B0****++ |

备注: 1. “-”表示容量偏差。 “-”=capacitance tolerance code, M=±20%,K=±10%,J=±5%,H=±3%,G=±2%
 2. “****”表示引线加工和包装代码(见table 1)。“****”=lead form and packing code (refer to table 1)

X-ON Electronics

Largest Supplier of Electrical and Electronic Components

Click to view similar products for [Film Capacitors](#) category:

Click to view products by [FARATRONIC](#) manufacturer:

Other Similar products are found below :

[703-6G](#) [82DC4100CK60J](#) [82EC1100DQ50K](#) [MMWAF150KME](#) [PCY2130F30153](#) [QXJ2E474KTPT](#) [QXL2B333KTPT](#) [QXM2G104K](#)
[DPM16S56K-1F](#) [EEC2G505HQA406](#) [B32234-.033@250V-K](#) [B81133-C1104-M3](#) [MTC355L1](#) [217-0716-001](#) [PA225L30](#) [CB182K0184J--](#)
[KP1830-247/061-G](#) [274ACF4400WA0J](#) [274ACF5150WA0J](#) [SCD105K122A3-22](#) [SCD205K122A3-24](#) [PCX2339F65224](#) [PCX2339F65334](#)
[2222 368 55105](#) [2222 370 21683](#) [QXL2E473KTPT](#) [445450-1](#) [MKT182022263473](#) [WMC08P22](#) [46KN410000N1K](#) [46KR368050M1M](#) [ECQ-](#)
[W4223KZ](#) [EEC2G805HQA415](#) [PA103L30](#) [82DC4100AA60K](#) [82EC2150DQ50K](#) [VEA105K50](#) [82IC2150DQ50J](#) [82EC2220DQ50J](#)
[MTC55L4](#) [MTC56L4](#) [730P205X9400](#) [PA104L30](#) [PA224L30](#) [82DC3220AA60J](#) [82EC4100DQ70J](#) [WYP-104M](#) [82CC4220AA70J](#)
[82EC3100Z370J](#) [B32656S8105K566](#)