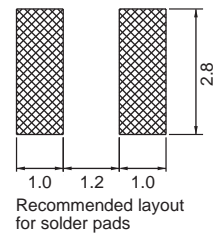
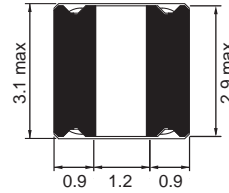
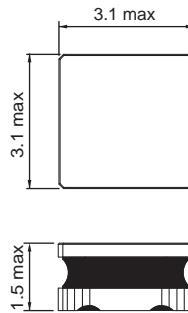
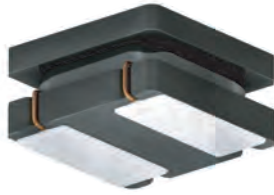


1212 FPS

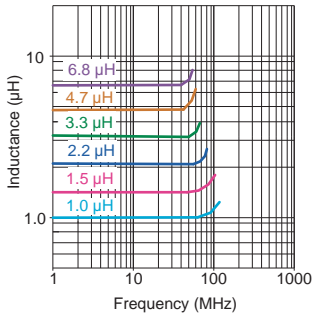


Shielded

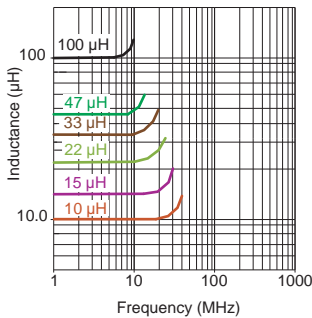
Engineer's Kit : EK-1212FPS-X



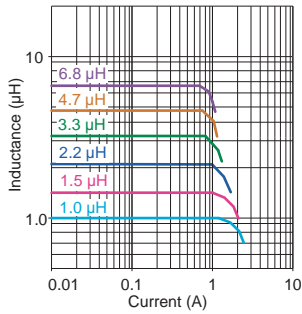
Typical Ls vs Frequency (f)



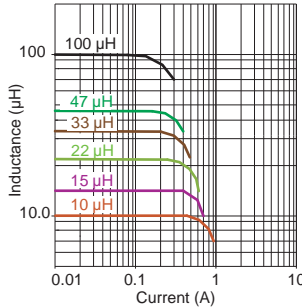
Typical Ls vs Frequency (f)



Typical Ls vs Current (I)



Typical Ls vs Current (I)



| Part No | Inductance L (µH) | f _L (MHz) | Tol ± (%) | SRF min (MHz) | DCR (Ω) | | Rated DC Current (A) | | | |
|-----------------|----------------------|-------------------------|--------------|---------------------|---------|-------|----------------------|------|------------------|------|
| | | | | | typ | max | I _{sat} | | I _{rms} | |
| 1212FPS-1R0X-01 | 1.0 | 1MHz, 0.1V | 20,30 | 145 | 0.040 | 0.048 | 2.35 | 2.10 | 2.35 | 2.10 |
| 1212FPS-1R5X-01 | 1.5 | 1MHz, 0.1V | 20,30 | 130 | 0.055 | 0.066 | 2.00 | 1.80 | 2.10 | 1.90 |
| 1212FPS-2R2X-01 | 2.2 | 1MHz, 0.1V | 20,30 | 90 | 0.060 | 0.072 | 1.65 | 1.48 | 1.80 | 1.60 |
| 1212FPS-3R3X-01 | 3.3 | 1MHz, 0.1V | 20,30 | 75 | 0.093 | 0.112 | 1.40 | 1.21 | 1.60 | 1.45 |
| 1212FPS-4R7X-01 | 4.7 | 1MHz, 0.1V | 20,30 | 65 | 0.113 | 0.136 | 1.20 | 1.08 | 1.40 | 1.25 |
| 1212FPS-6R8X-01 | 6.8 | 1MHz, 0.1V | 20,30 | 50 | 0.176 | 0.211 | 1.05 | 0.90 | 1.10 | 0.90 |
| 1212FPS-100X-01 | 10 | 1MHz, 0.1V | 20,30 | 45 | 0.234 | 0.276 | 0.88 | 0.75 | 1.00 | 0.87 |
| 1212FPS-150X-01 | 15 | 1MHz, 0.1V | 20,30 | 33 | 0.352 | 0.422 | 0.68 | 0.58 | 0.80 | 0.65 |
| 1212FPS-220X-01 | 22 | 1MHz, 0.1V | 20,30 | 28 | 0.510 | 0.622 | 0.58 | 0.47 | 0.60 | 0.55 |
| 1212FPS-330X-01 | 33 | 1MHz, 0.1V | 20,30 | 22 | 0.799 | 0.959 | 0.46 | 0.39 | 0.50 | 0.45 |
| 1212FPS-470X-01 | 47 | 1MHz, 0.1V | 20,30 | 18 | 1.172 | 1.406 | 0.38 | 0.32 | 0.45 | 0.40 |
| 1212FPS-101X-01 | 100 | 1MHz, 0.1V | 20,30 | 11 | 2.433 | 2.920 | 0.27 | 0.23 | 0.29 | 0.25 |

Core Material : Ferrite

Revision date : 25 Aug 2020

SPQ : Taped / Reel 2000 [-01]

Chip Inductors for Power Applications

X-ON Electronics

Largest Supplier of Electrical and Electronic Components

Click to view similar products for [Fixed Inductors](#) category:

Click to view products by [Fastron](#) manufacturer:

Other Similar products are found below :

[CR32NP-100KC](#) [CR43NP-680KC](#) [CR54NP-820KC](#) [CR54NP-8R5MC](#) [CTX32CT-100](#) [70F224AI](#) [MGDQ4-00004-P](#) [MHL1ECTTP18NJ](#)
[MHL1JCTTD12NJ](#) [PE-51506NL](#) [PE-53601NL](#) [PE-53602NL](#) [PE-53630NL](#) [PE-53824SNLT](#) [PE-62892NL](#) [PE-92100NL](#) [PG0434.801NLT](#)
[PG0936.113NLT](#) [9310-16](#) [PM06-2N7](#) [PM06-39NJ](#) [A01TK](#) [1206CS-471XJ](#) [HC2-2R2TR](#) [HC2LP-R47-R](#) [HC3-2R2-R](#) [1206CS-151XG](#)
[RCH664NP-140L](#) [RCH664NP-4R7M](#) [RCH8011NP-221L](#) [RCP1317NP-332L](#) [RCP1317NP-391L](#) [RCR1010NP-470M](#) [RCR110DNP-331L](#)
[DH2280-4R7M](#) [DS1608C-106](#) [ASPI-4020HI-R10M-T](#) [B10TJ](#) [B82477P4333M](#) [B82498B3101J000](#) [B82498B3680J000](#) [ELJ-RE27NJF2](#)
[1812CS-153XJ](#) [1812CS-183XJ](#) [1812CS-223XJ](#) [1812LS-104XJ](#) [1812LS-105XJ](#) [1812LS-124XJ](#) [1812LS-154XJ](#) [1812LS-223XJ](#)