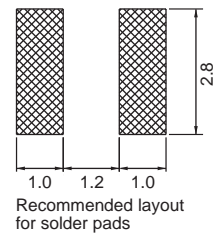
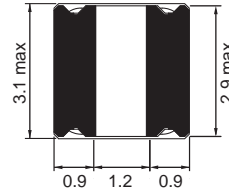
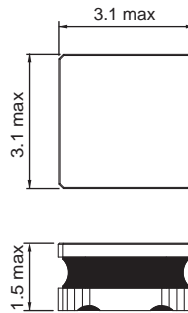
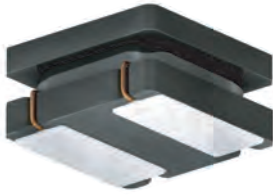
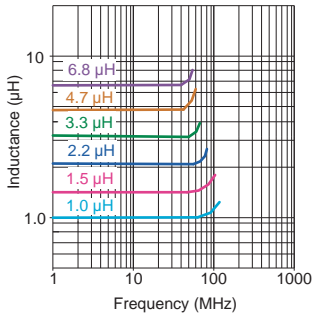


1212 FPS

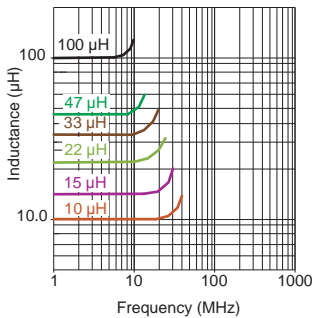
Shielded



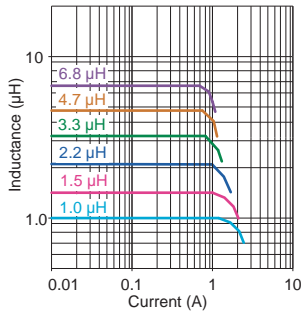
Typical Ls vs Frequency (f)



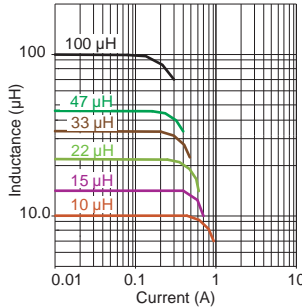
Typical Ls vs Frequency (f)



Typical Ls vs Current (I)



Typical Ls vs Current (I)



Part No	Inductance	f _L	ToI	SRF _{min}	DCR (Ω)		Rated DC Current (A)			
	L (μH)				(MHz)	± (%)	(MHz)	typ	max	I _{sat}
1212FPS-1R0X-01	1.0	1/0.1V	20,30	145	0.040	0.048	2.35	2.10	2.35	2.10
1212FPS-1R5X-01	1.5	1/0.1V	20,30	130	0.055	0.066	2.00	1.80	2.10	1.90
1212FPS-2R2X-01	2.2	1/0.1V	20,30	90	0.060	0.072	1.65	1.48	1.80	1.60
1212FPS-3R3X-01	3.3	1/0.1V	20,30	75	0.093	0.112	1.40	1.21	1.60	1.45
1212FPS-4R7X-01	4.7	1/0.1V	20,30	65	0.113	0.136	1.20	1.08	1.40	1.25
1212FPS-6R8X-01	6.8	1/0.1V	20,30	50	0.176	0.211	1.05	0.90	1.10	0.90
1212FPS-100X-01	10	1/0.1V	20,30	45	0.234	0.276	0.88	0.75	1.00	0.87
1212FPS-150X-01	15	1/0.1V	20,30	33	0.352	0.422	0.68	0.58	0.80	0.65
1212FPS-220X-01	22	1/0.1V	20,30	28	0.510	0.622	0.58	0.47	0.60	0.55
1212FPS-330X-01	33	1/0.1V	20,30	22	0.799	0.959	0.46	0.39	0.50	0.45
1212FPS-470X-01	47	1/0.1V	20,30	18	1.172	1.406	0.38	0.32	0.45	0.40
1212FPS-101X-01	100	1/0.1V	20,30	11	2.433	2.920	0.27	0.23	0.29	0.25

Core Material : Ferrite

Revision date : 07 Sep 2018

SPQ : Taped / Reel 2000 [-01]

Chip Inductors for Power Applications

X-ON Electronics

Largest Supplier of Electrical and Electronic Components

Click to view similar products for [Fixed Inductors](#) category:

Click to view products by [Fastron](#) manufacturer:

Other Similar products are found below :

[MLZ1608M6R8WTD25](#) [MLZ1608N6R8LT000](#) [MLZ1608N3R3LTD25](#) [MLZ1608N3R3LT000](#) [MLZ1608N150LT000](#)

[MLZ1608M150WTD25](#) [MLZ1608M3R3WTD25](#) [MLZ1608M3R3WT000](#) [MLZ1608M150WT000](#) [MLZ1608A1R5WT000](#)

[MLZ1608N1R5LT000](#) [B82432C1333K000](#) [PCMB053T-1R0MS](#) [PCMB053T-1R5MS](#) [PCMB104T-1R5MS](#) [CR32NP-100KC](#) [CR32NP-](#)

[151KC](#) [CR32NP-180KC](#) [CR32NP-181KC](#) [CR32NP-1R5MC](#) [CR32NP-390KC](#) [CR32NP-3R9MC](#) [CR32NP-680KC](#) [CR32NP-820KC](#)

[CR32NP-8R2MC](#) [CR43NP-390KC](#) [CR43NP-560KC](#) [CR43NP-680KC](#) [CR54NP-181KC](#) [CR54NP-470LC](#) [CR54NP-820KC](#) [CR54NP-8R5MC](#)

[MGDQ4-00004-P](#) [MGDU1-00016-P](#) [MHL1ECTTP18NJ](#) [MHL1JCTTD12NJ](#) [PE-51506NL](#) [PE-53601NL](#) [PE-53630NL](#) [PE-53824SNLT](#) [PE-](#)

[62892NL](#) [PE-92100NL](#) [PG0434.801NLT](#) [PG0936.113NLT](#) [PM06-2N7](#) [PM06-39NJ](#) [HC2LP-R47-R](#) [HC2-R47-R](#) [HC3-2R2-R](#) [HC8-1R2-R](#)