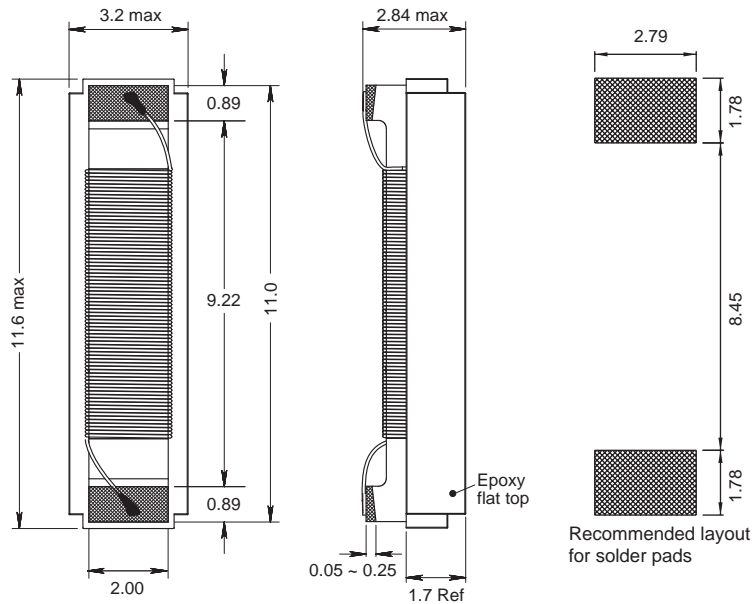
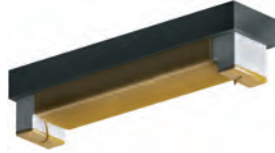
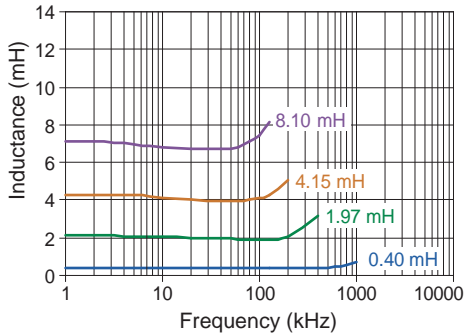


4408 AF

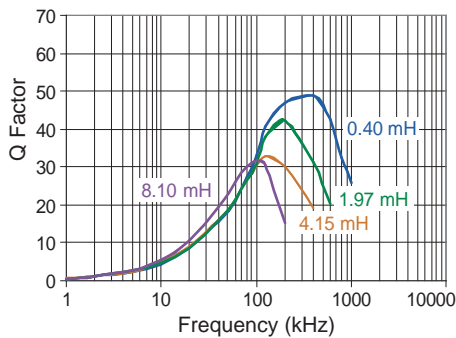
Transponder Coil



Typical Ls vs Frequency (f)



Typical Q vs Frequency (f)



| Part No | Inductance | f _L | Tol | Q | f _Q | SRF | DCR | Sensitivity |
|----------------|------------|----------------|-------|-----|----------------|-----------|---------|-------------|
| | L (mH) | (kHz) | ± (%) | min | (kHz) | ref (kHz) | max (Ω) | (mV/μT) |
| 4408AF-371K-YY | 0.37 | 125 | 10 | 27 | 125 | 1200 | 6.4 | 9 |
| 4408AF-401K-YY | 0.40 | 125 | 10 | 27 | 125 | 1100 | 6.8 | 9 |
| 4408AF-421K-YY | 0.42 | 125 | 10 | 27 | 125 | 1100 | 8.1 | 9 |
| 4408AF-511K-YY | 0.51 | 125 | 10 | 27 | 125 | 1000 | 8.5 | 11 |
| 4408AF-701K-YY | 0.70 | 125 | 10 | 30 | 125 | 821 | 12 | 15 |
| 4408AF-901K-YY | 0.90 | 125 | 10 | 28 | 125 | 760 | 13.9 | 19 |
| 4408AF-112K-YY | 1.08 | 125 | 10 | 31 | 125 | 710 | 15 | 19 |
| 4408AF-122K-YY | 1.20 | 125 | 10 | 30 | 125 | 710 | 18 | 24 |
| 4408AF-132K-YY | 1.34 | 125 | 10 | 30 | 125 | 700 | 20 | 25 |
| 4408AF-202K-YY | 1.97 | 125 | 10 | 30 | 125 | 630 | 29.7 | 32 |
| 4408AF-242K-YY | 2.38 | 125 | 10 | 32 | 125 | 560 | 30.8 | 40 |
| 4408AF-272K-YY | 2.66 | 125 | 10 | 35 | 125 | 530 | 35.2 | 40 |
| 4408AF-292K-YY | 2.89 | 125 | 10 | 35 | 125 | 530 | 35.2 | 41 |
| 4408AF-332K-YY | 3.30 | 125 | 10 | 35 | 125 | 450 | 48 | 46 |
| 4408AF-342K-YY | 3.45 | 125 | 10 | 29 | 125 | 430 | 60 | 48 |
| 4408AF-412K-YY | 4.15 | 125 | 10 | 29 | 125 | 400 | 70 | 57 |
| 4408AF-472K-YY | 4.70 | 125 | 10 | 29 | 125 | 380 | 70 | 63 |
| 4408AF-482K-YY | 4.80 | 125 | 10 | 29 | 125 | 380 | 80 | 64 |
| 4408AF-492K-YY | 4.90 | 125 | 10 | 29 | 125 | 380 | 80 | 66 |
| 4408AF-562K-YY | 5.60 | 125 | 10 | 28 | 125 | 350 | 80 | 75 |
| 4408AF-682K-YY | 6.80 | 125 | 10 | 28 | 125 | 345 | 95 | 98 |
| 4408AF-702K-YY | 7.00 | 125 | 10 | 30 | 125 | 340 | 100 | 99 |
| 4408AF-712K-YY | 7.10 | 125 | 10 | 30 | 125 | 340 | 100 | 100 |
| 4408AF-722K-YY | 7.20 | 125 | 10 | 30 | 125 | 335 | 86.4 | 104 |
| 4408AF-812K-YY | 8.10 | 125 | 10 | 28 | 125 | 310 | 125 | 119 |
| 4408AF-902K-YY | 9.00 | 125 | 10 | 28 | 125 | 310 | 111.6 | 141 |
| 4408AF-952K-YY | 9.50 | 125 | 10 | 28 | 125 | 310 | 111.6 | 172 |
| 4408AF-103K-YY | 10.0 | 125 | 10 | 30 | 125 | 310 | 111.6 | 175 |
| 4408AF-133K-YY | 13.5 | 125 | 10 | 30 | 125 | 200 | 130 | 246 |
| 4408AF-163K-YY | 16.2 | 125 | 10 | 30 | 125 | 200 | 175 | 364 |

Core Material : Ceramic & Ferrite

Revision date : 03 Sep 2020

SPQ : Taped / Reel 1000 [-08]
3000 [-04]

Remarks: - Unlisted inductance values available upon request.
- 2% and 5% tolerance available upon request.

X-ON Electronics

Largest Supplier of Electrical and Electronic Components

Click to view similar products for [Fixed Inductors](#) category:

Click to view products by [Fastron](#) manufacturer:

Other Similar products are found below :

[CR32NP-100KC](#) [CR43NP-680KC](#) [CR54NP-820KC](#) [CR54NP-8R5MC](#) [CTX32CT-100](#) [70F224AI](#) [MGDQ4-00004-P](#) [MHL1ECTTP18NJ](#)
[MHL1JCTTD12NJ](#) [PE-51506NL](#) [PE-53601NL](#) [PE-53602NL](#) [PE-53630NL](#) [PE-53824SNLT](#) [PE-62892NL](#) [PE-92100NL](#) [PG0434.801NLT](#)
[PG0936.113NLT](#) [9310-16](#) [PM06-2N7](#) [PM06-39NJ](#) [A01TK](#) [1206CS-471XJ](#) [HC2-2R2TR](#) [HC2LP-R47-R](#) [HC3-2R2-R](#) [1206CS-151XG](#)
[RCH664NP-140L](#) [RCH664NP-4R7M](#) [RCH8011NP-221L](#) [RCP1317NP-332L](#) [RCP1317NP-391L](#) [RCR1010NP-470M](#) [RCR110DNP-331L](#)
[DH2280-4R7M](#) [DS1608C-106](#) [ASPI-4020HI-R10M-T](#) [B10TJ](#) [B82477P4333M](#) [B82498B3101J000](#) [B82498B3680J000](#) [ELJ-RE27NJF2](#)
[1812CS-153XJ](#) [1812CS-183XJ](#) [1812CS-223XJ](#) [1812LS-104XJ](#) [1812LS-105XJ](#) [1812LS-124XJ](#) [1812LS-154XJ](#) [1812LS-223XJ](#)