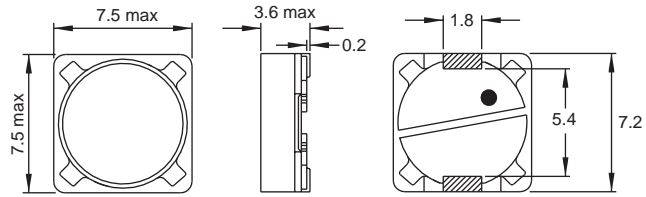
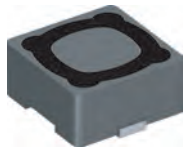
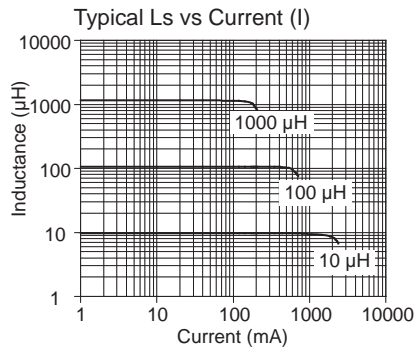
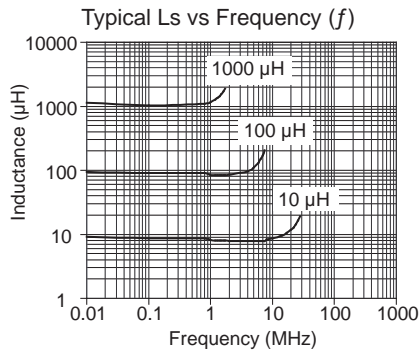
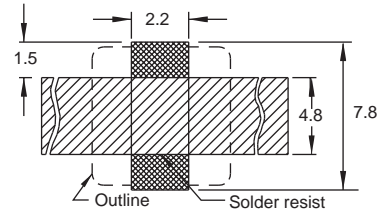


PIS 2812

Shielded



Recommended Layout for solder pads
* In order to prevent short circuit, a solder resist is recommended



Part No	Inductance	f _L	Tol	DCR max	Rated DC Current
	L (µH)				
PIS2812-1R0M-04	1.0	1	20	50	3.50
PIS2812-3R3M-04	3.3	1	20	70	3.00
PIS2812-5R6M-04	5.6	1	20	82	2.57
PIS2812-100M-04	10	1	20	80	1.68
PIS2812-120M-04	12	1	20	98	1.52
PIS2812-150M-04	15	1	20	130	1.33
PIS2812-180M-04	18	1	20	140	1.20
PIS2812-220M-04	22	1	20	190	1.07
PIS2812-270M-04	27	1	20	210	0.96
PIS2812-330M-04	33	1	20	240	0.91
PIS2812-390M-04	39	1	20	320	0.77
PIS2812-470M-04	47	1	20	360	0.76
PIS2812-560M-04	56	1	20	470	0.68
PIS2812-680M-04	68	1	20	520	0.61
PIS2812-820M-04	82	1	20	690	0.57
PIS2812-101M-04	100	1	20	790	0.50
PIS2812-121M-04	120	1	20	890	0.49
PIS2812-151M-04	150	1	20	1270	0.43
PIS2812-181M-04	180	1	20	1450	0.39
PIS2812-221M-04	220	1	20	1650	0.35
PIS2812-271M-04	270	1	20	2310	0.32
PIS2812-331M-04	330	1	20	2620	0.28
PIS2812-391M-04	390	1	20	2940	0.26
PIS2812-471M-04	470	1	20	4180	0.24
PIS2812-561M-04	560	1	20	4670	0.22
PIS2812-681M-04	680	1	20	5730	0.19
PIS2812-821M-04	820	1	20	6540	0.18
PIS2812-102M-04	1000	1	20	9440	0.16

Revision date : 02 Sept 2016

Core Material : Ferrite, magnetically shielded.

SPQ : Taped / Reel 1200 [-04]

Remarks : - Additional gluing to PCB board is recommended.
- I - see description in Inductors Technical Data.

X-ON Electronics

Largest Supplier of Electrical and Electronic Components

Click to view similar products for [Multilayer Ceramic Capacitors MLCC - SMD/SMT](#) category:

Click to view products by [Fastron](#) manufacturer:

Other Similar products are found below :

[M39014/01-1467](#) [M39014/02-1218V](#) [M39014/02-1225V](#) [M39014/02-1262V](#) [M39014/02-1301](#) [M39014/22-0631](#) [1210J5000102JCT](#)
[1210J2K00102KXT](#) [1210J5000103KXT](#) [1210J5000223KXT](#) [D55342E07B379BR-TR](#) [D55342E07B523DR-T/R](#) [1812J1K00103KXT](#)
[1812J1K00473KXT](#) [1812J2K00680JCT](#) [1812J4K00102MXT](#) [1812J5000102JCT](#) [1812J5000103JCT](#) [1812J5000682JCT](#) [NIN-FB391JTRF](#)
[NIN-FC2R7JTRF](#) [NPIS27H102MTRF](#) [C1206C101J1GAC](#) [C1608C0G1E472JT000N](#) [C2012C0G2A472J](#) [2220J2K00101JCT](#)
[KHC201E225M76N0T00](#) [LRC-LRF1206LF-01R025FTR1K](#) [1812J1K00222JCT](#) [1812J2K00102KXT](#) [1812J2K00222KXT](#)
[1812J2K00472KXT](#) [2-1622820-7-CUT-TAPE](#) [2220J3K00102KXT](#) [2225J2500824KXT](#) [CCR07CG103KM](#) [CGA2B2C0G1H010C](#)
[CGA2B2C0G1H040C](#) [CGA2B2C0G1H050C](#) [CGA2B2C0G1H060D](#) [CGA2B2C0G1H070D](#) [CGA2B2C0G1H151J](#) [CGA2B2C0G1H1R5C](#)
[CGA2B2C0G1H2R2C](#) [CGA2B2C0G1H3R3C](#) [CGA2B2C0G1H680J](#) [CGA2B2C0G1H6R8D](#) [CGA2B2X8R1H221K](#) [CGA2B2X8R1H472K](#)
[CGA3E1X7R1C474K](#)