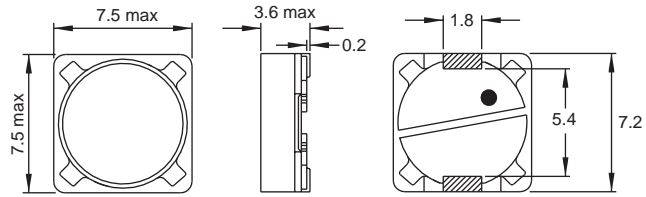
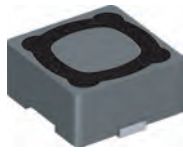
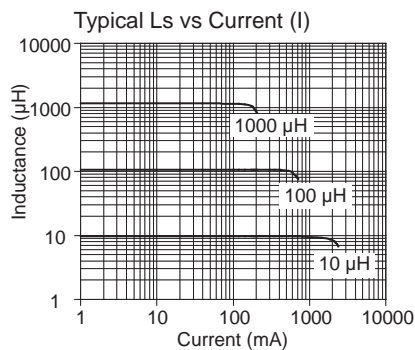
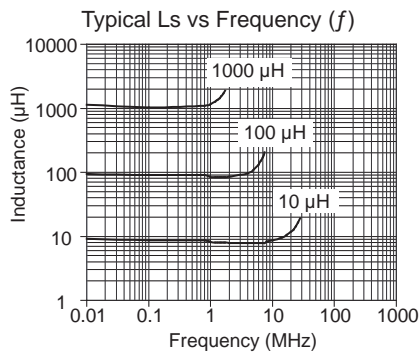
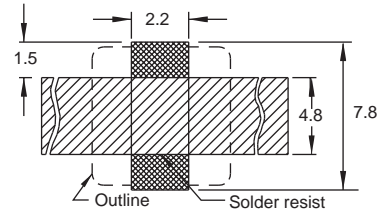


PIS 2812

Shielded



Recommended Layout for solder pads
* In order to prevent short circuit, a solder resist is recommended



Part No	Inductance	f _L (kHz)	Tol ± (%)	DCR max (mΩ)	Rated DC Current I (A)
	L (µH)				
PIS2812-1R0M-04	1.0	1	20	50	3.50
PIS2812-3R3M-04	3.3	1	20	70	3.00
PIS2812-5R6M-04	5.6	1	20	82	2.57
PIS2812-100M-04	10	1	20	80	1.68
PIS2812-120M-04	12	1	20	98	1.52
PIS2812-150M-04	15	1	20	130	1.33
PIS2812-180M-04	18	1	20	140	1.20
PIS2812-220M-04	22	1	20	190	1.07
PIS2812-270M-04	27	1	20	210	0.96
PIS2812-330M-04	33	1	20	240	0.91
PIS2812-390M-04	39	1	20	320	0.77
PIS2812-470M-04	47	1	20	360	0.76
PIS2812-560M-04	56	1	20	470	0.68
PIS2812-680M-04	68	1	20	520	0.61
PIS2812-820M-04	82	1	20	690	0.57
PIS2812-101M-04	100	1	20	790	0.50
PIS2812-121M-04	120	1	20	890	0.49
PIS2812-151M-04	150	1	20	1270	0.43
PIS2812-181M-04	180	1	20	1450	0.39
PIS2812-221M-04	220	1	20	1650	0.35
PIS2812-271M-04	270	1	20	2310	0.32
PIS2812-331M-04	330	1	20	2620	0.28
PIS2812-391M-04	390	1	20	2940	0.26
PIS2812-471M-04	470	1	20	4180	0.24
PIS2812-561M-04	560	1	20	4670	0.22
PIS2812-681M-04	680	1	20	5730	0.19
PIS2812-821M-04	820	1	20	6540	0.18
PIS2812-102M-04	1000	1	20	9440	0.16

Revision date : 02 Sept 2016

Core Material : Ferrite, magnetically shielded.

SPQ : Taped / Reel 1200 [-04]

Remarks : - Additional gluing to PCB board is recommended.
- I - see description in Inductors Technical Data.

X-ON Electronics

Largest Supplier of Electrical and Electronic Components

Click to view similar products for [Fixed Inductors](#) category:

Click to view products by [Fastron](#) manufacturer:

Other Similar products are found below :

[MLZ1608M6R8WTD25](#) [MLZ1608N6R8LT000](#) [MLZ1608N3R3LTD25](#) [MLZ1608N3R3LT000](#) [MLZ1608N150LT000](#)

[MLZ1608M150WTD25](#) [MLZ1608M3R3WTD25](#) [MLZ1608M3R3WT000](#) [MLZ1608M150WT000](#) [MLZ1608A1R5WT000](#)

[MLZ1608N1R5LT000](#) [B82432C1333K000](#) [PCMB053T-1R0MS](#) [PCMB053T-1R5MS](#) [PCMB104T-1R5MS](#) [CR32NP-100KC](#) [CR32NP-](#)

[151KC](#) [CR32NP-180KC](#) [CR32NP-181KC](#) [CR32NP-1R5MC](#) [CR32NP-390KC](#) [CR32NP-3R9MC](#) [CR32NP-680KC](#) [CR32NP-820KC](#)

[CR32NP-8R2MC](#) [CR43NP-390KC](#) [CR43NP-560KC](#) [CR43NP-680KC](#) [CR54NP-181KC](#) [CR54NP-470LC](#) [CR54NP-820KC](#) [CR54NP-8R5MC](#)

[MGDQ4-00004-P](#) [MGDU1-00016-P](#) [MHL1ECTTP18NJ](#) [MHL1JCTTD12NJ](#) [PE-51506NL](#) [PE-53601NL](#) [PE-53630NL](#) [PE-53824SNLT](#) [PE-](#)

[62892NL](#) [PE-92100NL](#) [PG0434.801NLT](#) [PG0936.113NLT](#) [PM06-2N7](#) [PM06-39NJ](#) [HC2LP-R47-R](#) [HC2-R47-R](#) [HC3-2R2-R](#) [HC8-1R2-R](#)