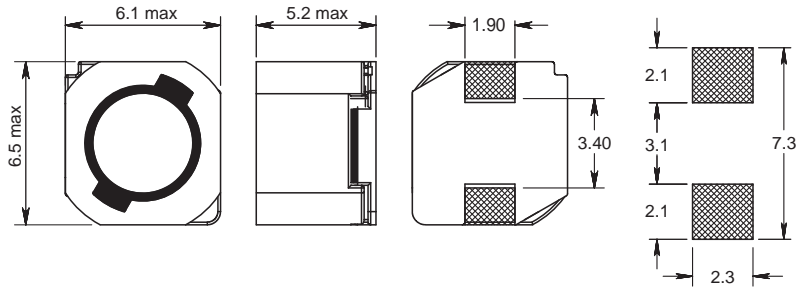
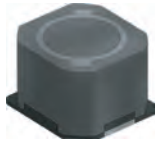
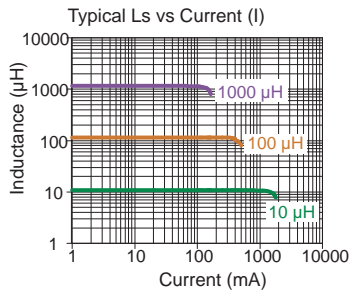
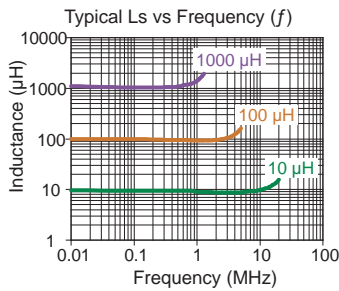


# PISA 2416

Magnetically Shielded



Recommended layout for solder pads



Part No	Inductance L (µH)	f <sub>L</sub> (kHz)	Tol ± (%)	DCR max (Ω)	Rated DC Current I (A)
PISA2416-4R7M-04	4.7	1	20	0.09	2.40
PISA2416-100M-04	10	1	20	0.12	1.35
PISA2416-120M-04	12	1	20	0.13	1.20
PISA2416-150M-04	15	1	20	0.18	1.10
PISA2416-180M-04	18	1	20	0.24	1.00
PISA2416-220M-04	22	1	20	0.27	0.91
PISA2416-270M-04	27	1	20	0.3	0.82
PISA2416-330M-04	33	1	20	0.33	0.75
PISA2416-390M-04	39	1	20	0.37	0.69
PISA2416-470M-04	47	1	20	0.52	0.62
PISA2416-560M-04	56	1	20	0.56	0.58
PISA2416-680M-04	68	1	20	0.63	0.52
PISA2416-820M-04	82	1	20	0.71	0.47
PISA2416-101M-04	100	1	20	1.03	0.43
PISA2416-121M-04	120	1	20	1.15	0.39
PISA2416-151M-04	150	1	20	1.68	0.35
PISA2416-181M-04	180	1	20	1.87	0.32
PISA2416-221M-04	220	1	20	2.08	0.29
PISA2416-271M-04	270	1	20	2.37	0.26
PISA2416-331M-04	330	1	20	2.67	0.23
PISA2416-391M-04	390	1	20	2.94	0.22
PISA2416-471M-04	470	1	20	3.93	0.2
PISA2416-561M-04	560	1	20	5.43	0.18
PISA2416-681M-04	680	1	20	7.32	0.17
PISA2416-821M-04	820	1	20	8.24	0.15
PISA2416-102M-04	1000	1	20	9.26	0.14

**Core Material** : Ferrite  
**Base Material** : Plastic

Revision date : 25 Jul 2018

**SPQ** : Taped / Reel 1000 [-04]

**Remarks :**

- Additional gluing to PCB board is recommended.
- I - see description in Inductors Technical Data.

## X-ON Electronics

Largest Supplier of Electrical and Electronic Components

*Click to view similar products for [Fixed Inductors](#) category:*

*Click to view products by [Fastron](#) manufacturer:*

Other Similar products are found below :

[MLZ1608M6R8WTD25](#) [MLZ1608N6R8LT000](#) [MLZ1608N3R3LTD25](#) [MLZ1608N3R3LT000](#) [MLZ1608N150LT000](#)

[MLZ1608M150WTD25](#) [MLZ1608M3R3WTD25](#) [MLZ1608M3R3WT000](#) [MLZ1608M150WT000](#) [MLZ1608A1R5WT000](#)

[MLZ1608N1R5LT000](#) [B82432C1333K000](#) [PCMB053T-1R0MS](#) [PCMB053T-1R5MS](#) [PCMB104T-1R5MS](#) [CR32NP-100KC](#) [CR32NP-](#)

[151KC](#) [CR32NP-180KC](#) [CR32NP-181KC](#) [CR32NP-1R5MC](#) [CR32NP-390KC](#) [CR32NP-3R9MC](#) [CR32NP-680KC](#) [CR32NP-820KC](#)

[CR32NP-8R2MC](#) [CR43NP-390KC](#) [CR43NP-560KC](#) [CR43NP-680KC](#) [CR54NP-181KC](#) [CR54NP-470LC](#) [CR54NP-820KC](#) [CR54NP-8R5MC](#)

[MGDQ4-00004-P](#) [MGDU1-00016-P](#) [MHL1ECTTP18NJ](#) [MHL1JCTTD12NJ](#) [PE-51506NL](#) [PE-53601NL](#) [PE-53630NL](#) [PE-53824SNLT](#) [PE-](#)

[62892NL](#) [PE-92100NL](#) [PG0434.801NLT](#) [PG0936.113NLT](#) [PM06-2N7](#) [PM06-39NJ](#) [HC2LP-R47-R](#) [HC2-R47-R](#) [HC3-2R2-R](#) [HC8-1R2-R](#)