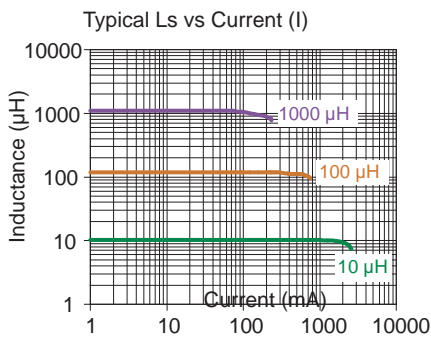
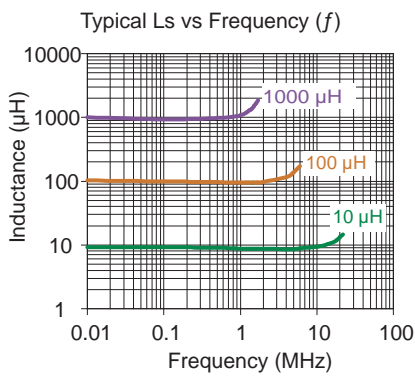
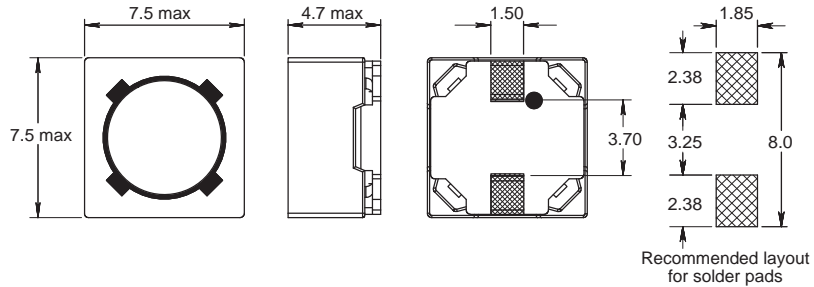
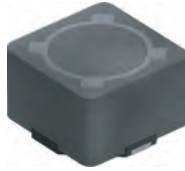


PISA 2816

Magnetically Shielded



Part No	Inductance	f _L	Tol	DCR	Rated DC
	L (µH)	(kHz)	± (%)	max (mΩ)	Current I (A)
PISA2816-2R2M-04	2.2	1	20	45	2.20
PISA2816-3R3M-04	3.3	1	20	45	2.00
PISA2816-4R7M-04	4.7	1	20	45	2.00
PISA2816-100M-04	10	1	20	52	1.84
PISA2816-120M-04	12	1	20	58	1.71
PISA2816-150M-04	15	1	20	81	1.47
PISA2816-180M-04	18	1	20	91	1.31
PISA2816-220M-04	22	1	20	110	1.23
PISA2816-270M-04	27	1	20	150	1.12
PISA2816-330M-04	33	1	20	170	0.96
PISA2816-390M-04	39	1	20	230	0.91
PISA2816-470M-04	47	1	20	260	0.88
PISA2816-560M-04	56	1	20	350	0.75
PISA2816-680M-04	68	1	20	380	0.69
PISA2816-820M-04	82	1	20	430	0.61
PISA2816-101M-04	100	1	20	610	0.60
PISA2816-121M-04	120	1	20	660	0.52
PISA2816-151M-04	150	1	20	880	0.46
PISA2816-181M-04	180	1	20	980	0.42
PISA2816-221M-04	220	1	20	1170	0.36
PISA2816-271M-04	270	1	20	1640	0.34
PISA2816-331M-04	330	1	20	1860	0.32
PISA2816-391M-04	390	1	20	2850	0.29
PISA2816-471M-04	470	1	20	3010	0.26
PISA2816-561M-04	560	1	20	3620	0.23
PISA2816-681M-04	680	1	20	4630	0.22
PISA2816-821M-04	820	1	20	5200	0.20
PISA2816-102M-04	1000	1	20	6000	0.18

Core Material : Ferrite

Revision date : 25 Jul 2018

Base Material : Plastic

SPQ : Taped / Reel 1000 [-04]

Remarks : - Additional gluing to PCB board is recommended.
- 1 - see description in Inductors Technical Data.

SMD Power Inductors

X-ON Electronics

Largest Supplier of Electrical and Electronic Components

Click to view similar products for [Fixed Inductors](#) category:

Click to view products by [Fastron](#) manufacturer:

Other Similar products are found below :

[CR32NP-100KC](#) [CR43NP-680KC](#) [CR54NP-820KC](#) [CR54NP-8R5MC](#) [CTX32CT-100](#) [70F224AI](#) [MGDQ4-00004-P](#) [MHL1ECTTP18NJ](#)
[MHL1JCTTD12NJ](#) [PE-51506NL](#) [PE-53601NL](#) [PE-53602NL](#) [PE-53630NL](#) [PE-53824SNLT](#) [PE-62892NL](#) [PE-92100NL](#) [PG0434.801NLT](#)
[PG0936.113NLT](#) [9310-16](#) [PM06-2N7](#) [PM06-39NJ](#) [A01TK](#) [1206CS-471XJ](#) [HC2-2R2TR](#) [HC2LP-R47-R](#) [HC3-2R2-R](#) [1206CS-151XG](#)
[RCH664NP-140L](#) [RCH664NP-4R7M](#) [RCH8011NP-221L](#) [RCP1317NP-332L](#) [RCP1317NP-391L](#) [RCR1010NP-470M](#) [RCR110DNP-331L](#)
[DH2280-4R7M](#) [DS1608C-106](#) [ASPI-4020HI-R10M-T](#) [B10TJ](#) [B82477P4333M](#) [B82498B3101J000](#) [B82498B3680J000](#) [ELJ-RE27NJF2](#)
[1812CS-153XJ](#) [1812CS-183XJ](#) [1812CS-223XJ](#) [1812LS-104XJ](#) [1812LS-105XJ](#) [1812LS-124XJ](#) [1812LS-154XJ](#) [1812LS-223XJ](#)