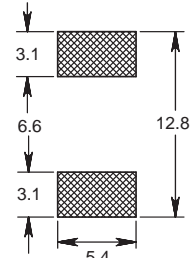
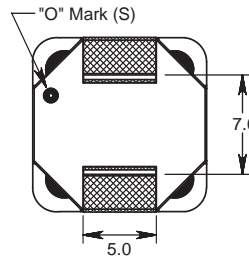
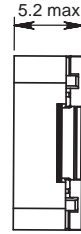
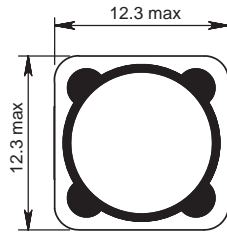
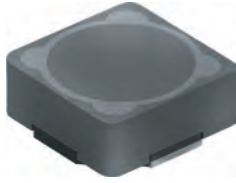


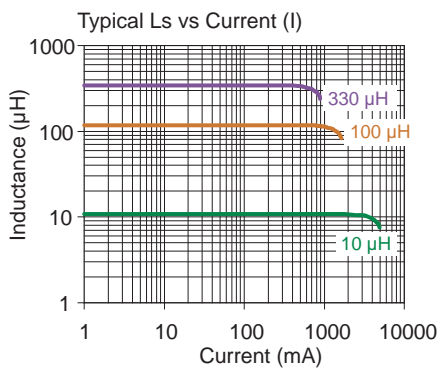
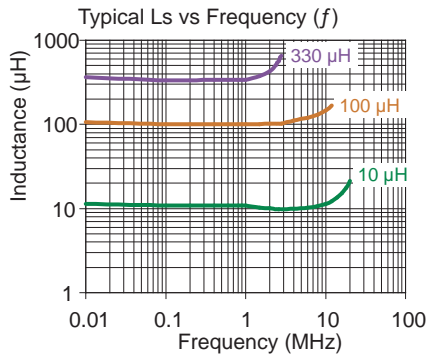
# PISA 4716

Magnetically Shielded



Recommended layout for solder pads

SMD Power Inductors



Part No	Inductance	f <sub>L</sub>	Tol	DCR	Rated DC
	L (µH)	(kHz) ± (%)	± (%)	max (mΩ)	Current I (A)
PISA4716-3R3M-04	3.3	100	20	15	7.0
PISA4716-3R9M-04	3.9	100	20	15	6.5
PISA4716-4R7M-04	4.7	100	20	18	5.7
PISA4716-5R6M-04	5.6	100	20	30	5.7
PISA4716-6R8M-04	6.8	100	20	23	4.9
PISA4716-8R2M-04	8.2	100	20	26	4.6
PISA4716-100M-04	10	100	20	28	4.5
PISA4716-120M-04	12	100	20	38	4.0
PISA4716-150M-04	15	100	20	50	3.2
PISA4716-180M-04	18	100	20	57	3.1
PISA4716-220M-04	22	100	20	66	2.9
PISA4716-270M-04	27	100	20	80	2.8
PISA4716-330M-04	33	100	20	97	2.7
PISA4716-390M-04	39	100	20	132	2.1
PISA4716-470M-04	47	100	20	150	1.9
PISA4716-560M-04	56	100	20	190	1.8
PISA4716-680M-04	68	100	20	220	1.5
PISA4716-820M-04	82	100	20	260	1.3
PISA4716-101M-04	100	100	20	308	1.2
PISA4716-121M-04	120	100	20	380	1.1
PISA4716-151M-04	150	100	20	530	0.95
PISA4716-181M-04	180	100	20	620	0.85
PISA4716-221M-04	220	100	20	700	0.8
PISA4716-271M-04	270	100	20	876	0.6
PISA4716-331M-04	330	100	20	990	0.5

Core Material : Ferrite

Revision date : 25 Jul 2018

Base Material : Plastic

SPQ : Taped / Reel 500 [-04]

Remarks :- Additional gluing to PCB board is recommended.  
- I - see description in Inductors Technical Data.

## X-ON Electronics

Largest Supplier of Electrical and Electronic Components

*Click to view similar products for [Fixed Inductors](#) category:*

*Click to view products by [Fastron](#) manufacturer:*

Other Similar products are found below :

[CR32NP-100KC](#) [CR43NP-680KC](#) [CR54NP-820KC](#) [CR54NP-8R5MC](#) [CTX32CT-100](#) [70F224AI](#) [MGDQ4-00004-P](#) [MHL1ECTTP18NJ](#)  
[MHL1JCTTD12NJ](#) [PE-51506NL](#) [PE-53601NL](#) [PE-53602NL](#) [PE-53630NL](#) [PE-53824SNLT](#) [PE-62892NL](#) [PE-92100NL](#) [PG0434.801NLT](#)  
[PG0936.113NLT](#) [9310-16](#) [PM06-2N7](#) [PM06-39NJ](#) [A01TK](#) [1206CS-471XJ](#) [HC2-2R2TR](#) [HC2LP-R47-R](#) [HC3-2R2-R](#) [1206CS-151XG](#)  
[RCH664NP-140L](#) [RCH664NP-4R7M](#) [RCH8011NP-221L](#) [RCP1317NP-332L](#) [RCP1317NP-391L](#) [RCR1010NP-470M](#) [RCR110DNP-331L](#)  
[DH2280-4R7M](#) [DS1608C-106](#) [ASPI-4020HI-R10M-T](#) [B10TJ](#) [B82477P4333M](#) [B82498B3101J000](#) [B82498B3680J000](#) [ELJ-RE27NJF2](#)  
[1812CS-153XJ](#) [1812CS-183XJ](#) [1812CS-223XJ](#) [1812LS-104XJ](#) [1812LS-105XJ](#) [1812LS-124XJ](#) [1812LS-154XJ](#) [1812LS-223XJ](#)