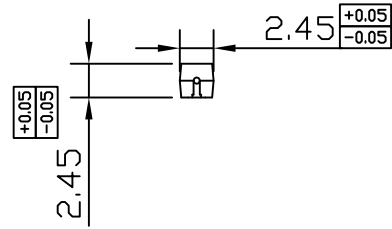
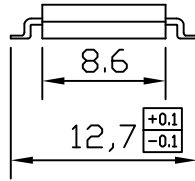
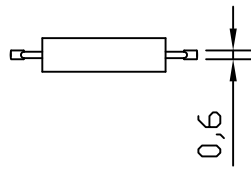


Unit:mm

客户



订购信息: Order Information

型号 Type	干簧管灵敏度 AT Range	触点方式 Contact Form
FRS-09A13SMDH0710		
		常开 (A)
注: 卷盘包装: 2500个/盘 @500pcs/reel		

卷盘包装尺寸

Dimensions for tape and reel

技术参数 SPECIFICATION

开关触点 Contact Form		常开 (A)
最大开关功率 Contact Rating - max.	W	10
最大开关电压 Switching Voltage - max.	V	100
最大开关电流 Switching Current - max.	A	0.5
最大载流电流 Carry Current - max.	A	0.5
最大接触电阻 Contact Resistance - max.	mΩ	150
最小击穿电压 Breakdown Voltage - min.	V	110/150
绝缘电阻 Insulation Resistance - min.	MΩ	10000
工作温度 Operating Temperature	°C	-40~105

深圳市法思特传感器有限公司
SHENZHEN FAST SENSOR CO., LTD.

TITLE
塑封贴片干簧管
Molded SMD Reed Switch

PART NO. FRS-09A13SMDH 系列
SCALE 2:1 REV. 00
www.szfast.com

Drawn by ZXL / 2016-01-01 Reviewed by LJ / 2016-01-01 Approved by LY / 2016-01-01

X-ON Electronics

Largest Supplier of Electrical and Electronic Components

Click to view similar products for [Board Mount Hall Effect/Magnetic Sensors](#) category:

Click to view products by [FAST Sensors](#) manufacturer:

Other Similar products are found below :

[HGPRDT005A](#) [AH1894-FA-7](#) [AH277AZ4-AG1](#) [AV-10448](#) [SS41C](#) [AH1894-Z-7](#) [TLE4946-1L](#) [TLE4976L](#) [SS85CA](#) [BU52003GUL-E2](#)
[AH277AZ4-BG1](#) [AH3376-P-B](#) [TLE4941](#) [TLE4945-2L](#) [AH3360-FT4-7](#) [TLE4941-1](#) [AH374-P-A](#) [SS41-JL](#) [AH1913-W-7](#) [AH3373-P-B](#)
[MA732GQ-Z](#) [MA330GQ-Z](#) [S-57K1NBL2A-M3T2U](#) [S-57P1NBL9S-M3T4U](#) [S-576ZNL2B-L3T2U](#) [S-576ZNL2B-A6T8U](#) [S-57P1NBL0S-](#)
[M3T4U](#) [S-57A1NSL1A-M3T2U](#) [S-57K1RBL1A-M3T2U](#) [S-57P1NBH9S-M3T4U](#) [S-57P1NBH0S-M3T4U](#) [S-57A1NSH1A-M3T2U](#) [S-](#)
[57A1NSH2A-M3T2U](#) [S-57K1NBH1A-M3T2U](#) [S-57A1NNL1A-M3T2U](#) [S-5701BC11B-L3T2U5](#) [S-57GNNL3S-A6T8U](#) [S-57TZ1L1S-](#)
[A6T8U](#) [S-57GSNL3S-A6T8U](#) [S-5716ANDH0-I4T1U](#) [S-57GSNL5S-L3T2U](#) [S-57GDNL3S-L3T2U](#) [S-57GNNL3S-L3T2U](#) [S-57RBNL8S-](#)
[L3T2U](#) [S-57RBNL9S-A6T8U](#) [S-57RB1L8S-L3T2U](#) [S-57GDNL5S-L3T2U](#) [S-57RBNL9S-L3T2U](#) [S-57TZ1L1S-L3T2U](#) [S-57TZNL1S-](#)
[A6T8U](#)