



## Multiflex FCEN: very flexible and robust



FCEN is a very flexible, multi-purpose conduit that is made of galvanised steel. The areas of application are extensive. On rolling stock it can be used to protect cables in underfloor, roof and wall applications, CCTV, passenger information systems, door locking systems. The robust, galvanised steel construction makes it suitable for protecting cables in rail stations which are exposed to rodent and vandalism.

### Material & Construction:

**Construction:** Galvanised steel core, square-locked.

**Temperature:** -55 °C to +300 °C.

**Colour:** Metal coloured.

### Classification according to NEN-EN-IEC 61386:

**Compression resistance:** Class 4, Heavy (1250 N).

**Impact resistance:** Class 4, Heavy (6 J).

**Tensile strength:** Class 4, Heavy (1000 N).

**Protection class:** IP 40.



Square locked

**ANACONDA  
MULTIFLEX**

FCEN	Diametre		Bending radius		Small Coil		Standard Coil		Large Coil		Weight (Kg/m)
	Size (mm)	Inside (mm)	Outside (mm)	Static (mm)	Dynamic (mm)	Metre	Article No.	Metre	Article No.	Metre	
12	10,0	13,0	30	45	-	-	25	370.012.2	50	370.012.5	0,15
16	13,0	16,0	45	60	10	370.016.1	25	370.016.2	50	370.016.5	0,20
20	17,0	20,5	50	70	10	370.020.1	25	370.020.2	50	370.020.5	0,26
25	21,2	25,0	60	80	10	370.025.1	25	370.025.2	50	370.025.5	0,30
32	28,1	32,0	70	90	10	370.032.1	25	370.032.2	-	-	0,42
40	37,7	43,0	90	120	10	370.040.1	25	370.040.2	-	-	0,60
50	48,4	54,0	110	140	10	370.050.1	25	370.050.2	-	-	0,90

**CONDUIT  
TYPE  
FCEN**

The fittings for Multiflex FCEN are outlined on page 1-03.



Size Multitite	DN	10	12	16	18	20	25	32	40	50	-	-	-
Fittings	ISO	M10	M12 / M16	M16 / M20	M20	M20	M25	M32	M40	M50 / M63	-	-	-
	PG	7	9	11 / 13,5	13,5	16	21	29	36	48	-	-	-
	NPT	-	-	1/2"	-	1/2"	3/4"	1"	-	-	-	-	-



## Anaconda IP 40 nickel plated brass fittings for Multiflex FCEN

These nickel plated brass Anamet fittings are similar to the standard fittings for Multitite type FCE, but the caps are adjusted to be used with Multiflex type FCEN. The 2-piece fittings are universal, offer excellent corrosion protection in combination with a good appearance. In addition to the mentioned straight fittings, other types or custom made solutions are also possible.



### Material & Construction:

**Construction:** Nickel plated brass fitting, consisting of 2 parts (cap and body).

**Material:** Cap and body are nickel plated brass.

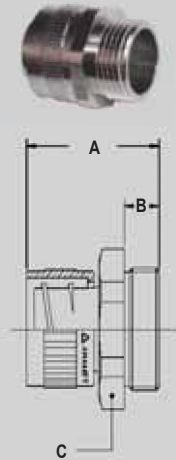
**Temperature:** -55 °C till +260 °C continuous.

**Protection class:** IP 40.

**Colour:** Metal.

ANACONDA  
MULTIFLEX

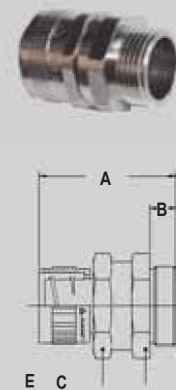
FITTINGS FOR  
TYPE FCEN  
IP 40



### ISO straight fitting, fixed, male, nickel plated brass.



Thread ISO	FCEN Size (DN)	Min. Internal Bore (mm)	Dimensions in mm					Standard Package	Article Number	Weight (Kg/100)
			A	B	C	D	E			
M12 x 1,5	12	8,5	26	10	18	-	-	10	256.012.0	1,8
M16 x 1,5	12	8,5	26	10	18	-	-	10	256.015.0	2,0
M16 x 1,5	16	11,2	27	10	20	-	-	10	256.016.0	2,3
M20 x 1,5	16	11,2	27	10	22	-	-	10	256.017.0	2,6
M20 x 1,5	20	15,2	27	10	24	-	-	10	256.020.0	3,0
M25 x 1,5	25	19,2	32	12	30	-	-	5	256.025.0	5,4
M32 x 1,5	32	25,9	35	13	38	-	-	5	256.032.0	8,1
M40 x 1,5	40	34,8	41	14	48	-	-	2	256.040.0	15,0
M50 x 1,5	50	44,8	45	15	60	-	-	2	256.050.0	22,4
M63 x 1,5	50	44,8	46	16	70	-	-	2	256.060.0	28,6



### ISO straight fitting, swivel, male, nickel plated brass.



Thread ISO	FCEN Size (DN)	Min. Internal Bore (mm)	Dimensions in mm					Standard Package	Article Number	Weight (Kg/100)
			A	B	C	D	E			
M12 x 1,5	12	8,5	34	10	18	-	18	10	256.112.0	2,4
M16 x 1,5	12	8,5	34	10	18	-	18	10	256.115.0	3,1
M16 x 1,5	16	11,2	36	10	20	-	20	10	256.116.0	3,9
M20 x 1,5	16	11,2	36	10	20	-	22	10	256.117.0	4,2
M20 x 1,5	20	15,2	37	10	24	-	24	10	256.120.0	4,9
M25 x 1,5	25	19,2	43	12	30	-	30	5	256.125.0	8,8
M32 x 1,5	32	25,9	47	13	38	-	38	5	256.132.0	13,3
M40 x 1,5	40	34,8	56	14	48	-	48	2	256.140.0	25,1
M50 x 1,5	50	44,8	60	15	60	-	60	2	256.150.0	36,7
M63 x 1,5	50	44,8	61	16	60	-	70	2	256.160.0	47,1



## Anaconda Compact nickel plated brass fittings for Multiflex FCEN

The nickel plated fittings series "compact" developed for Anaconda Sealite conduits, can be used also for FCEN conduits replacing the standard galvanised steel ferrule and polyamide clamping ring with a special brass connection set for FCEN, hereunder illustrated. These compact fittings have a shorter thread and are lighter in weight than the standard Anaconda fittings, but their quality remains very high. All ferrules have been machine turned to ensure a neat fit while the high quality finish of the nickel plated brass fittings protects them against corrosion and gives them a nice appearance. Only a few options are mentioned below, but all versions of the compact fittings (straight, 45° and 90°) up to size 32 can be used with the FCEN connection set as



well as the standard Anaconda fittings up to size 32 in all executions and thread sizes.

### Material & Construction:

**Construction:** Nickel plated brass fitting, consisting of 4 parts (counter nut, clamping ring, ferrule and body).

**Material:** Counter nut and body are nickel plated brass. Clamping ring and ferrule are brass passivated. O-rings are from NBR (black for ISO metric and blue for Pg).

**Temperature:** -55 °C till +260 °C continuous (cable-hose-fittings are -40°C till +100°C).

**Protection class:** IP 40.

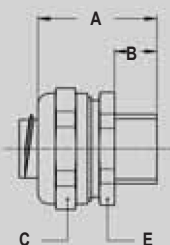
**Colour:** Metal.

### Connection set, nickel plated brass, for combination with Multiflex type FCEN.



Thread	FCEN Size (mm)	Min. Internal Bore (mm)	Fitting thread size			Standard Package	Article Number	Weight (Kg/100)
			ISO	Pg	NPT			
-	12	8,3	M16 x 1,5	Pg 11	1/2" NPT	10	817.112.0	1,8
-	16	11,2	M16 x 1,5	Pg 11	1/2" NPT	10	817.116.0	2,2
-	20	15,2	M20 x 1,5	Pg 16	1/2" NPT	10	817.120.0	2,6
-	25	19,2	M25 x 1,5	Pg 21	3/4" NPT	5	817.125.0	3,8
-	32	25,9	M32 x 1,5	Pg 29	1" NPT	5	817.132.0	4,2

### ISO straight compact fitting, male, nickel plated brass (including brass connection set).

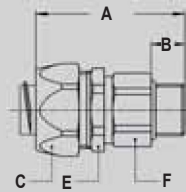


Thread ISO	FCEN Size (mm)	Min. Internal Bore (mm)	Dimensions in mm					Standard Package	Article Number	Weight (Kg/100)
			A	B	C	D	E			
M16 x 1,5	12	8,3	30	10	26	-	24	10	712.015.3	4,2
M20 x 1,5	12	8,3	30	10	26	-	24	10	712.014.3	4,4
M16 x 1,5	16	11,2	30	10	26	-	24	10	712.016.3	4,2
M20 x 1,5	16	11,2	30	10	26	-	24	10	712.017.3	4,4
M20 x 1,5	20	15,2	32	10	29	-	27	10	712.020.3	5,0
M25 x 1,5	25	19,2	33	10	35	-	33	5	712.025.3	7,4
M32 x 1,5	32	25,9	36	12	45	-	44	5	712.032.3	13,9

ANACONDA  
MULTIFLEX

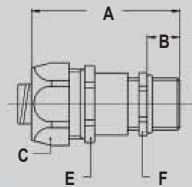
FITTINGS FOR  
TYPE FCEN  
IP 40

**ISO straight swivel fitting, male, nickel plated brass  
(including brass connection set).**



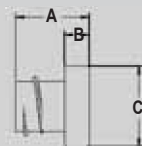
Thread	FCEN Size (mm)	Min. Internal Bore (mm)	Dimensions in mm					Standard Package	Article Number	Weight (Kg/100)
			A	B	C	E	F			
M16 x 1,5	12	8,3	48	10	26	24	21	10	813.015.3	8,1
M16 x 1,5	16	10,7	48	10	26	24	21	10	813.016.3	8,1
M20 x 1,5	20	13,9	49	10	29	27	25	10	813.020.3	10,2
M25 x 1,5	25	17,4	49	10	35	33	31	5	813.025.3	13,8
M32 x 1,5	32	23,4	55	12	45	42	38	5	813.032.3	32,5

**ISO cable-hose fitting, male, nickel plated brass  
(including brass connection set).**



Thread	FCEN Size (mm)	Clamping Range (mm)	Dimensions in mm					Standard Package	Article Number	Weight (Kg/100)
			A	B	C	E	F			
M16 x 1,5	16	3 - 10	64	12	26	24	20	10	812.716.3	8,2
M20 x 1,5	16	6 - 11	57	12	26	24	22	10	812.717.3	9,5
M20 x 1,5	20	7 - 14	64	12	29	27	24	10	812.720.3	10,2
M25 x 1,5	20	10 - 14	62	12	29	27	27	10	812.722.3	11,7
M25 x 1,5	25	9 - 18	77	15	35	33	30	5	812.725.3	17,0
M32 x 1,5	25	13 - 18	70	15	35	33	34	5	812.728.3	19,6
M32 x 1,5	32	13 - 25	88	15	45	43	40	5	812.732.3	31,0

**End cap, nickel plated brass.**



Thread	FCEN Size (mm)	Min. Internal Bore (mm)	Dimensions in mm					Standard Package	Article Number	Weight (Kg/100)
			A	B	C	D	E			
-	12	8,5	18	6	17	-	-	10	264.112.0	0,4
-	16	11,2	18	6	20	-	-	10	264.116.0	0,8
-	20	15,2	19	6	24	-	-	10	264.120.0	1,2
-	25	19,2	21	7	30	-	-	5	264.125.0	1,8
-	32	25,9	22	8	38	-	-	5	264.132.0	2,9

**ANACONDA  
MULTIFLEX**

**FITTINGS FOR  
TYPE FCEN  
IP 40**

## X-ON Electronics

Largest Supplier of Electrical and Electronic Components

*Click to view similar products for [Conduit Fittings & Accessories](#) category:*

*Click to view products by [ANAMET EUROPE](#) manufacturer:*

Other Similar products are found below :

[S53.35A](#) [260-416](#) [DM0240-1/2A](#) [817.612.0](#) [55506625](#) [1.511.2001.50](#) [1.533.1601.50](#) [1.533.2001.50](#) [52005810](#) [817.716.0](#) [712.015.0](#) [216-420](#) [2276](#) [2663-P](#) [C2070-P](#) [3582V](#) [2643-P](#) [4975](#) [2644-P](#) [90480](#) [2404-P](#) [1047561](#) [2723-P](#) [55506355](#) [1.513.1101.14](#) [55502461](#) [55502462](#) [55502463](#) [55502464](#) [55502473](#) [166-22214](#) [166-22215](#) [166-24800](#) [166-25801](#) [166-30318](#) [SHR-C1](#) [2037 12-20 LGR](#) [2037 16-24 LGR](#) [HP50SS](#) [55502470](#) [SH PA6 BL ND10](#) [5308 946](#) [295.012.0](#) [2955 M16](#) [2955 M25](#) [2955 M32](#) [2955 M40](#) [297.212.0](#) [297.240.0](#) [298.012.0](#)