



晶体管
TRANSISTOR
C9012B

主要参数 MAIN CHARACTERISTICS

I _C	-500mA
V _{CEO}	- 20V
P _C	625mW

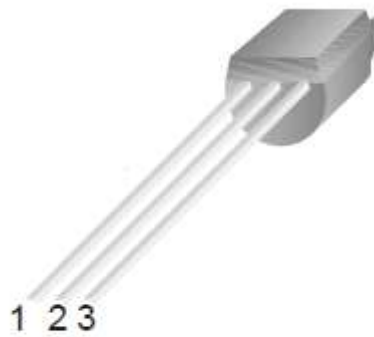
产品特性 FEATURES

硅外延	Epitaxial silicon
高开关速度	High switching speed
与 C9013B 互补	Complementary to C9013B
RoHS 产品	RoHS product

用途 APPLICATIONS

高频开关电源	High frequency switch power supply
一般功率放大电路	Commonly power amplifier circuit
高频功率变换	High frequency power transform

封装形式 Package



TO-92

1. Emitter 2. Base 3. Collector

绝对最大额定值 ABSOLUTE RATINGS (T_c=25°C)

项目 Parameter	符号 Symbol	数值 Value	单位 Unit
集电极—基极直流电压 Collector- Base Voltage (I _E =0)	V _{CB0}	-40	V
集电极—发射极直流电压 Collector- Emitter Voltage (I _B =0)	V _{CEO}	-20	V
发射极—基极直流电压 Emitter-Base Voltage (I _C =0)	V _{EB0}	-5	V
最大集电极直流电流 Collector Current (DC)	I _C	-500	mA
最大集电极耗散功率 Total Dissipation (TO-92)	P _C	625	mW
最高结温 Junction Temperature	T _j	150	°C
贮存温度 Storage Temperature	T _{stg}	-55~+150	°C

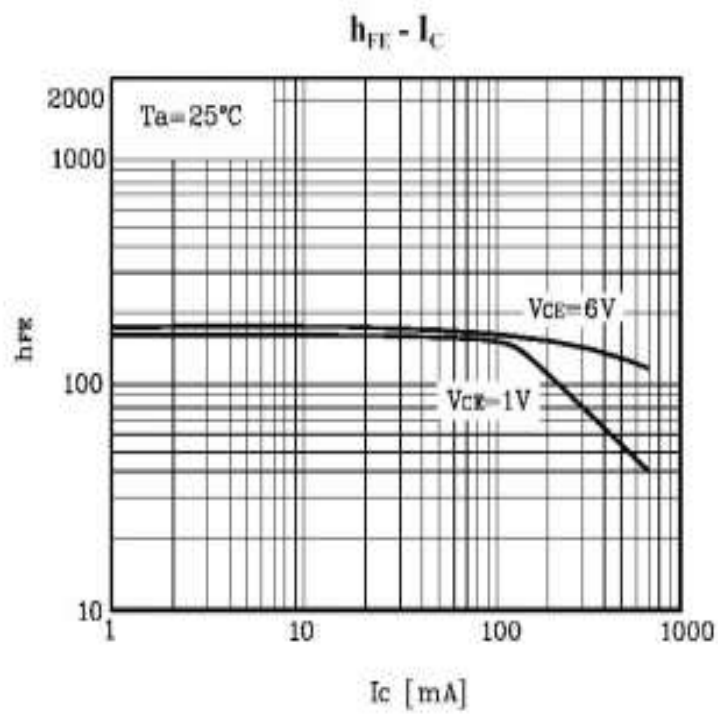
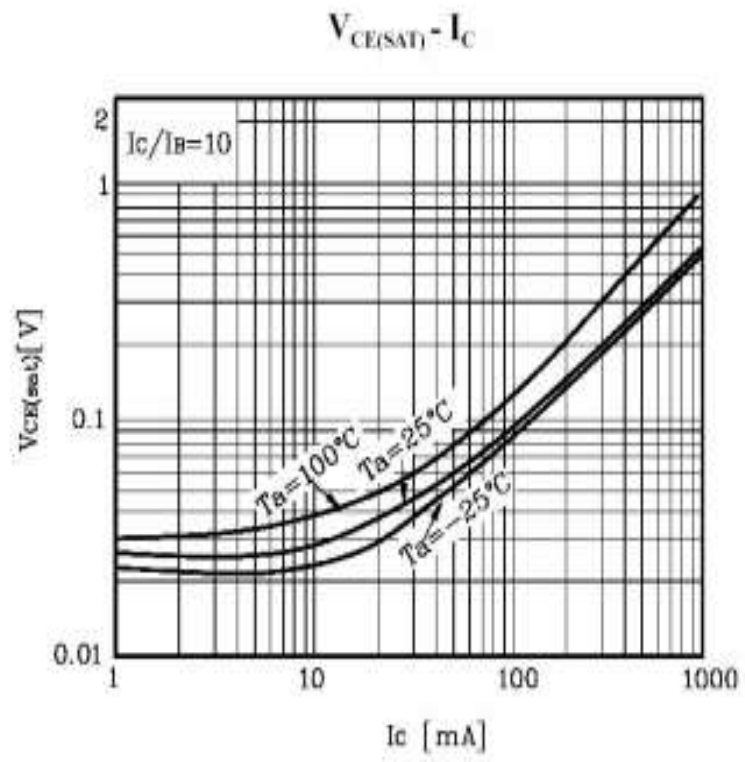
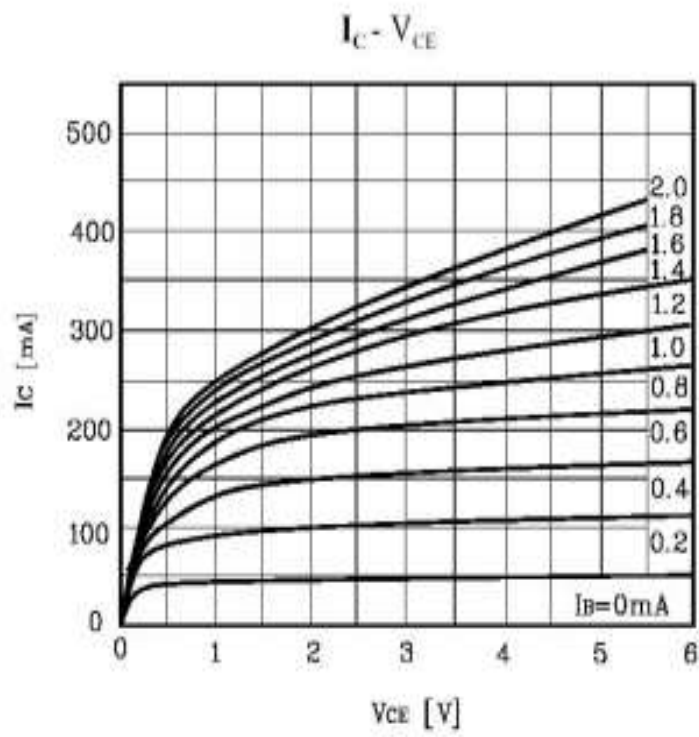
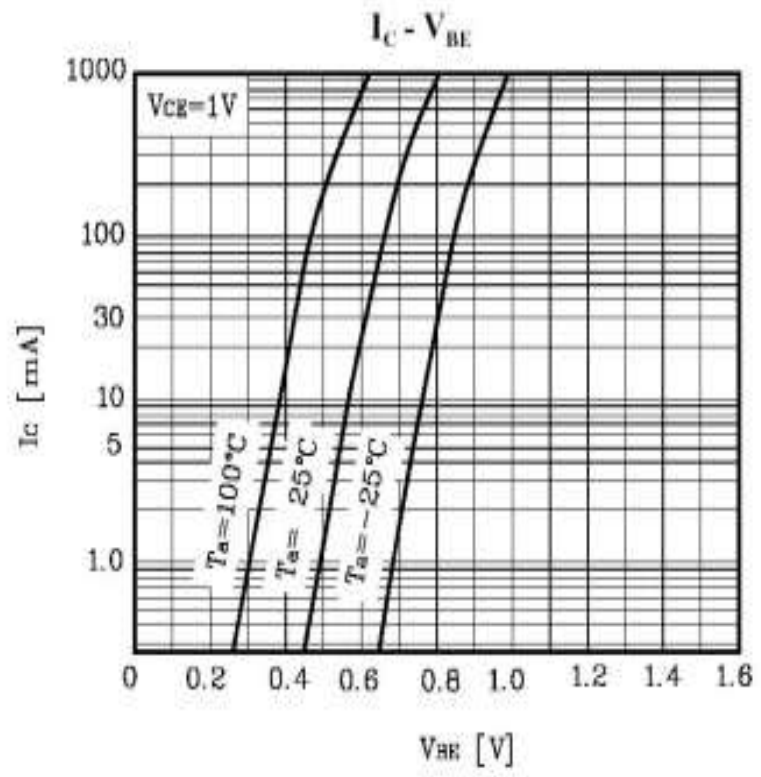
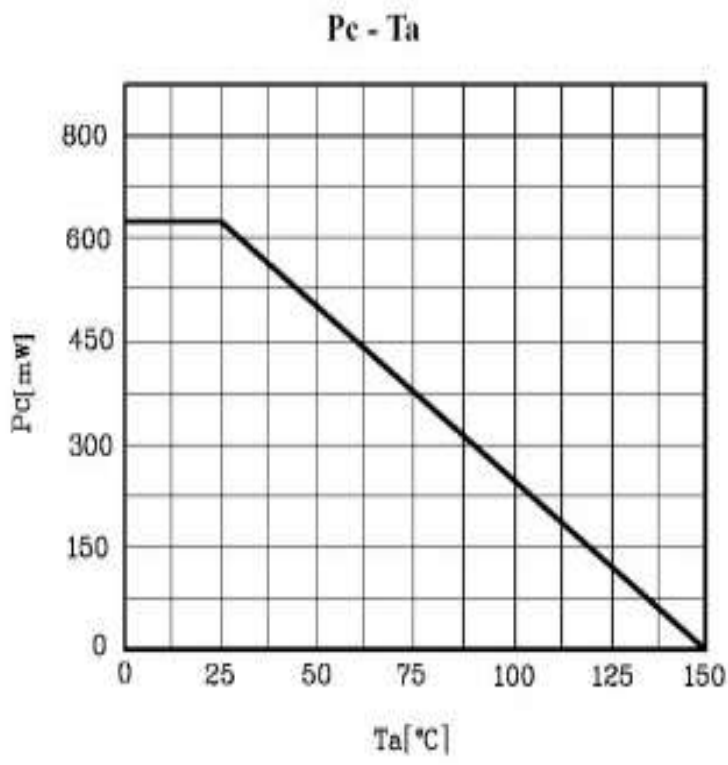
电特性 ELECTRICAL CHARACTERISTICS

项目 Parameter	测试条件 Tests conditions	最小值 (min)	典型值 (typ)	最大值 (max)	单位 Unit
V(BR) _{CBO}	I _C =-100μA, I _E =0	-40	-	-	V
V(BR) _{CEO}	I _C =-1mA, I _B =0	-20	-	-	V
V(BR) _{EBO}	I _E =-100μA, I _C =0	-5	-	-	V
I _{CBO}	V _{CB} =-25V, I _E =0	-	-	-0.1	μA
I _{EBO}	V _{EB} =-3V, I _C =0	-	-	-0.1	μA
H _{fe} (1)	V _{CE} =-1V, I _C =-50mA	64	-	276	-
H _{fe} (2)	V _{CE} =-1V, I _C =-500mA	40	-	-	-
V _{CE(sat)}	I _C =-500mA, I _B =-50mA	-	-0.18	-0.6	V
V _{BE(sat)}	I _C =-500mA, I _B =-50mA	-	-0.95	-1.2	V

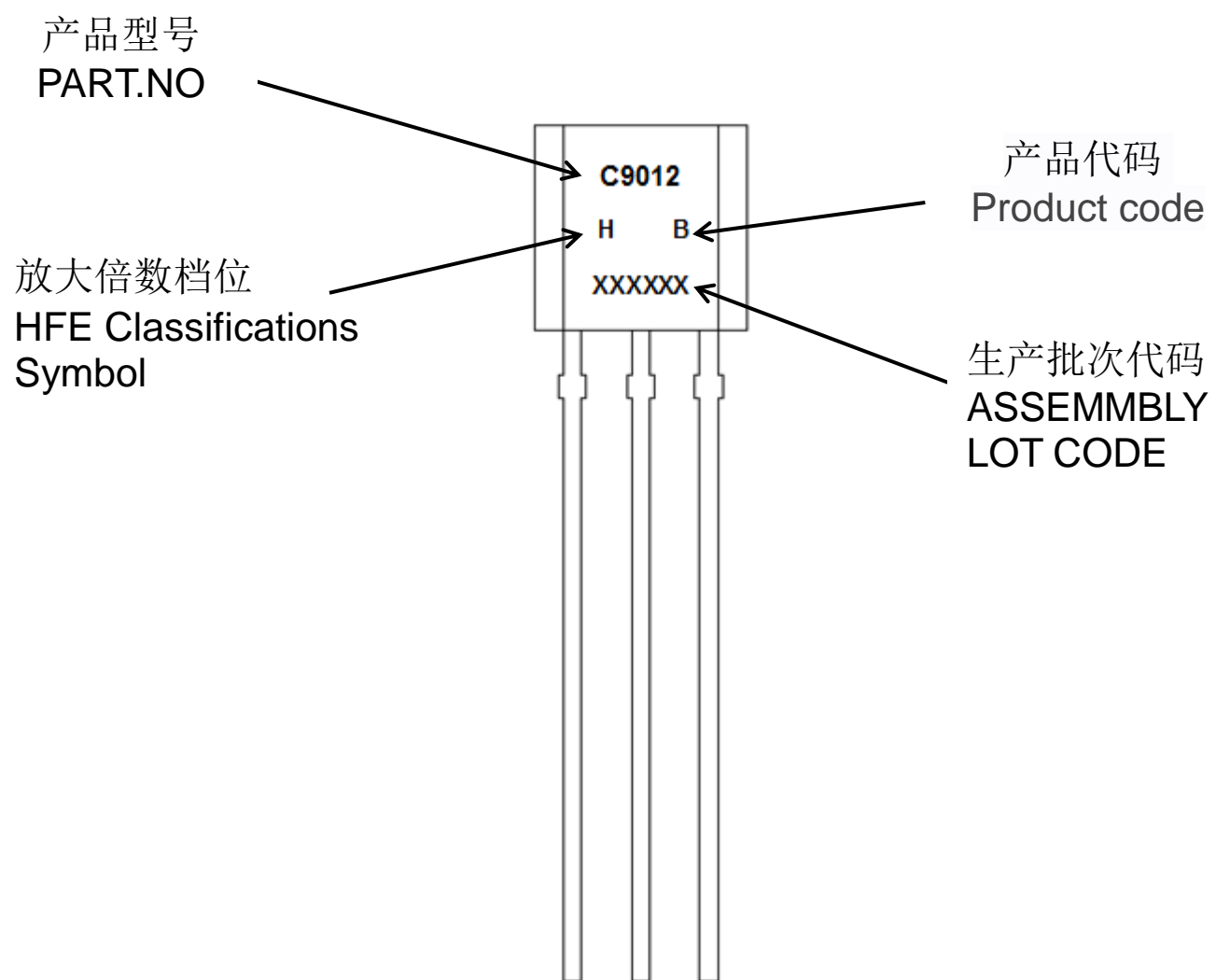
放大倍数 HFE Classifications

HFE Classifications	D	E	F	G	H	I
HFE Range	64-91	78-112	96-135	112-166	144-202	188-276

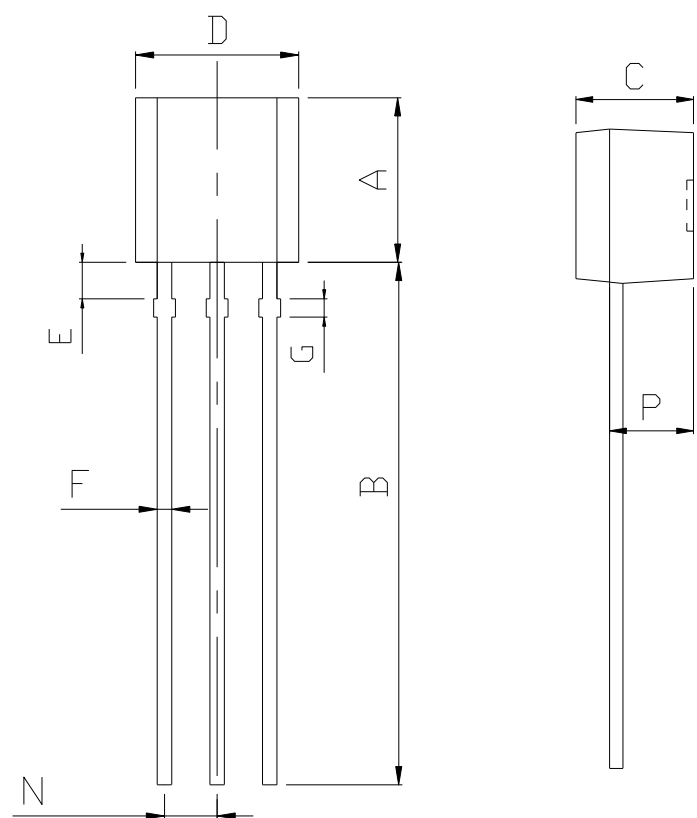
典型特性曲线 Electrical Characteristics



印记 **Marking:**

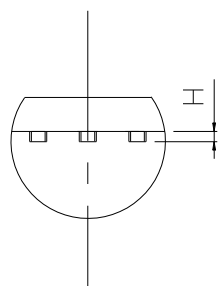


外形尺寸: Package Dimension:



DIM	MILLIMETERS
A	4.55±0.20
B	14.50±0.30
C	3.54±0.20
D	4.56±0.20
E	1.30±0.20
F	0.46±0.20
G	0.50±0.10
H	0.32±0.10
N	1.30±0.20
P	2.52±0.20

(Units: mm)



X-ON Electronics

Largest Supplier of Electrical and Electronic Components

Click to view similar products for [Bipolar Transistors - BJT category](#):

Click to view products by [FeiHong manufacturer](#):

Other Similar products are found below :

[619691C](#) [MCH4017-TL-H](#) [MJ15024/WS](#) [MJ15025/WS](#) [BC546/116](#) [BC556/FSC](#) [BC557/116](#) [BSW67A](#) [HN7G01FU-A\(T5L,F,T](#)
[NJVMJD148T4G](#) [NSVMMBT6520LT1G](#) [NTE187A](#) [NTE195A](#) [NTE2302](#) [NTE2330](#) [NTE2353](#) [NTE316](#) [IMX9T110](#) [NTE63](#) [NTE65](#)
[C4460](#) [SBC846BLT3G](#) [2SA1419T-TD-H](#) [2SA1721-O\(TE85L,F\)](#) [2SA1727TLP](#) [2SA2126-E](#) [2SB1202T-TL-E](#) [2SB1204S-TL-E](#) [2SC5488A-](#)
[TL-H](#) [2SD2150T100R](#) [SP000011176](#) [FMC5AT148](#) [2N2369ADCSM](#) [2SB1202S-TL-E](#) [2SC2412KT146S](#) [2SC4618TLN](#) [2SC5490A-TL-H](#)
[2SD1816S-TL-E](#) [2SD1816T-TL-E](#) [CMXT2207 TR](#) [CPH6501-TL-E](#) [MCH4021-TL-E](#) [BC557B](#) [TTC012\(Q\)](#) [BULD128DT4](#) [JANTX2N3810](#)
[Jantx2N5416](#) [US6T6TR](#) [KSF350](#) [068071B](#)