

■立式固定电感器
Type Color Code Inductors
◆特征
Feature

- * 体积小，占用安装空间小，适合自动安装的卷（编）带包装；

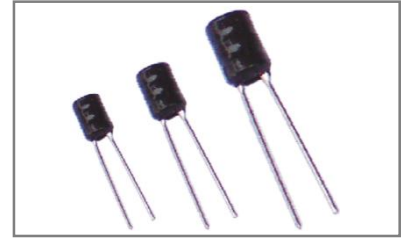
Small volume, small installation space, suitable for automatic installation of coil (ribbon) packaging;

- * 分布电容小；自共振频率高特殊导针结构，不易产生开路现象。

Small distributed capacitance; The special guide pin structure with high self resonance frequency is not easy to produce open circuit.

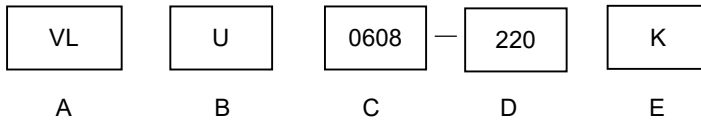
- * 工业生产标准尺寸及多种脚型产品。

Standard size, various lead configuration.


◆应用
Application

- * 一般用途品

General purpose goods

◆型号表示法
Part Number


A:

| 产品类别 Product Type | |
|-------------------|------------------------------------|
| 代号 Code | 类别 Type |
| VL | 立式固定电感器 Vertical fixed inductor |

B:

| 封装形式 | |
|---------------------------|---------------------------|
| Envelopment configuration | |
| U | UL 套管 UL sleeve |
| P | 磁屏蔽 Magnetic shielding |
| 空格 | 无封装 NO Encapsulation |

C:

| 本体尺寸代码 | | |
|------------------------|-----------|-----------|
| Nominal Body Size Code | | |
| 类型 | 外径 | 体长 |
| Type | Dmax (mm) | Lmax (mm) |
| 0406 | 5.5 | 9.0 |
| 0608 | 8.0 | 12.0 |
| 0810 | 10.0 | 12.5 |
| 0912 | 11.0 | 14.5 |
| 1012 | 12.5 | 14.5 |

D:

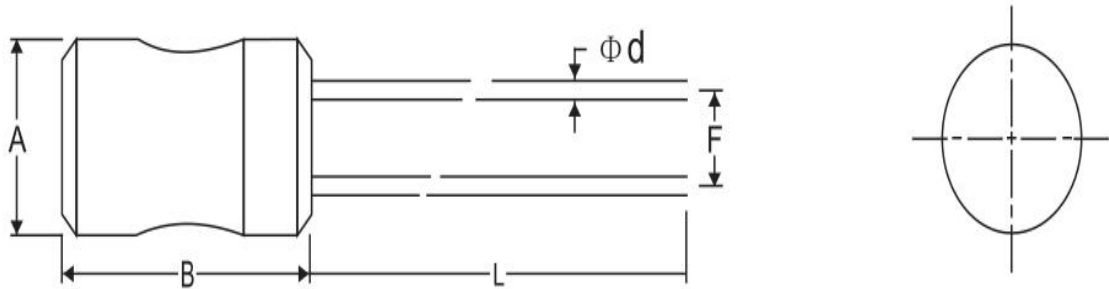
E:

| 标称电感量 Nominal Inductance(μH) |
|--|
| 前两位数字为有效数字, 后一位数字表示零的个数 First two digits are signify cant and the thirddigit is number of zeros .例如: For example: |
| 101=100 μH |
| 5R6=5.6 μH |
| R22=0.22 μH |

| 感量偏差 Tolerance | |
|-------------------|------------|
| J | $\pm 5\%$ |
| K | $\pm 10\%$ |
| M | $\pm 20\%$ |

◆外型尺寸

Size code,



| 类型 Yype | 尺寸 Dimensions(mm) | | | | |
|------------|----------------------|--------|------------|--------------------|---------------|
| | A(Max) | B(Max) | L | ΦD | F |
| 0406 | 5.5 | 8.5 | 15 \pm 2 | 0.5 \pm 0.1 | 2.0 \pm 0.5 |
| 0507 | 6.5 | 9.0 | 15 \pm 2 | 0.5 \pm 0.1 | 2.5 \pm 0.5 |
| 0608 | 8.0 | 11.0 | 15 \pm 2 | 0.6 \pm 0.1 | 3.0 \pm 0.5 |
| 0810 | 10.0 | 12.5 | 15 \pm 2 | 0.6/0.65 \pm 0.1 | 5.0 \pm 0.5 |
| 0912 | 11.0 | 14.5 | 15 \pm 2 | 0.65/0.8 \pm 0.1 | 5.0 \pm 0.5 |
| 1010 | 12.0 | 12.5 | 15 \pm 2 | 0.8 \pm 0.1 | 5.0 \pm 0.5 |
| 1012 | 12.0 | 14.5 | 15 \pm 2 | 0.8 \pm 0.1 | 5.0 \pm 0.5 |
| 1215 | 14.5 | 16.5 | 15 \pm 2 | 0.8 \pm 0.1 | 7.5 \pm 0.5 |
| 1415 | 16.5 | 17.0 | 15 \pm 2 | 0.8 \pm 0.1 | 7.5 \pm 0.5 |

#特殊要求的产品可以根据客户要求生产

The products can be customized according to customer requirement

◆电性能参数及测试条件
Electrical Characteristics&Test Conditions

| 型号 Part Number | 电感量 L (μH) | 公差 Tolerance | 测试频率 Test Freq | 直流电阻 DCR (Ω) Max | Lsat (A) |
|-------------------|---------------|-----------------|-------------------|---------------------|----------|
| 0406 | 1.0-1000 | J/K/M | 1KHZ 1.0V | 0.025-9.0 | 0.15-2.0 |
| 0507 | 1.0-2000 | J/K/M | 1KHZ 1.0V | 0.03-10.0 | 0.18-2.0 |
| 0608 | 1.0-10000 | J/K/M | 1KHZ 1.0V | 0.015-40.0 | 0.04-2.0 |
| 0810 | 1.0-10000 | J/K/M | 1KHZ 1.0V | 0.013-19.0 | 0.1-8.5 |
| 0912 | 1.0-15000 | J/K/M | 1KHZ 1.0V | 0.015-17.5 | 0.1-5.2 |
| 1010 | 1.0-6800 | J/K/M | 1KHZ 1.0V | 0.0165-9.8 | 0.2-6.1 |
| 1212 | 1.0-2200 | J/K/M | 1KHZ 1.0V | 0.02-3.5 | 0.35-5.5 |
| 1215 | 10-2200 | J/K/M | 1KHZ 1.0V | 0.025-2.5 | 0.7-9.8 |
| 1415 | 22-330 | J/K/M | 1KHZ 1.0V | 0.13-5.2 | 1.0-8.0 |

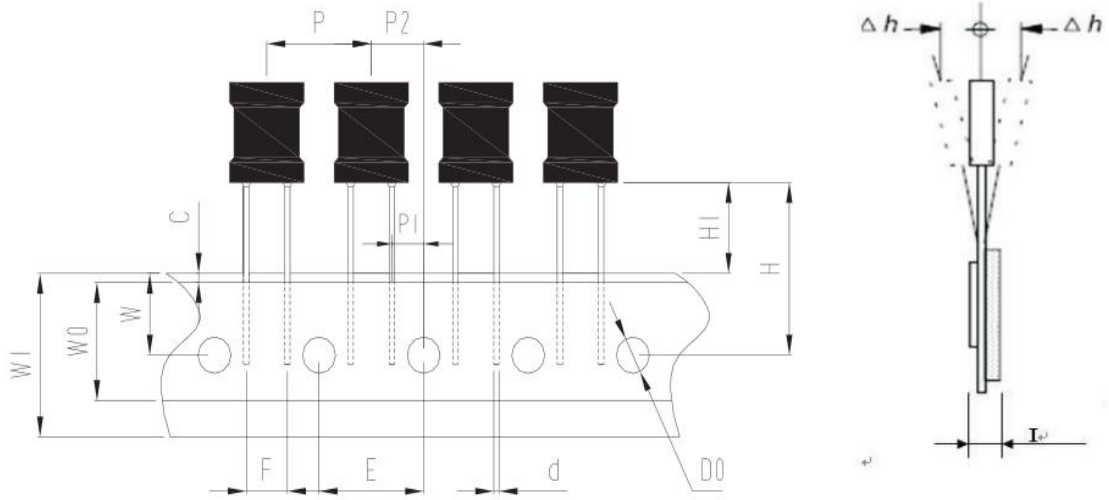
#特殊要求的产品可以根据客户要求生产

The products can be customized according to customer requirement

◆可靠性测试方法
Reliability Test Method

| 组别 Group | 试验项目 Test items | 试验方法 test method | 判定标准 Criteria |
|-------------|---|--|--|
| 1 | 1.1 外观 appearance | 目测 Visual inspection | 符合产品标准要求 Meet the requirements of product standards |
| | 1.2 尺寸 size | 用精度不少于 0.02mm 的量具测量。 Measure with a measuring tool with an accuracy of no less than 0.02mm. | |
| | 1.3 电性能 Electrical performance | 由相应的测试仪进行测试 Test with the appropriate tester | |
| 2 | 2.1 叠加电流 Superimposed current | 施加规格书中规定的电流（若无叠加电流要求则无需试验）Apply the current specified in the specification (no test is required if there is no superimposed current requirement) | 变化符合承认书中规定的要求 Changes meet the requirements specified in the letter of recognition |
| | 2.2 可焊性 Weldability | 焊锡温度：255℃±5℃ Solder temperature: 255 °C ± 5 °C 浸渍时间：2.5s±0.5s Immersion time: 2.5s ± 0.5s | 上锡率≥95% Tinning rate ≥ 95% |
| | 2.3 恒定湿热 Steady damp-heat | 试验温度：40℃±2℃； 试验湿度：(90%~95%)RH 试验时间：500 h±2 h 恢复时间：24 h±2 h Test temperature: 40 °C ± 2 °C； Test humidity: (90%~95%) RH Test time: 500 h ± 2 h Recovery time: 24 h ± 2 h | 外观无明显损伤， -10%≤ΔL/L≤10% There is no obvious damage to the appearance, -10%≤ΔL/L≤10% |
| | 2.4 引出端强度 Terminal tensile strength | 拉力计 tensimeter | ①磁芯外径>5mm: ≥3.0Kg ②磁芯外径≤5mm: ≥2.0Kg ① Outer diameter of magnetic core > 5mm: ≥ 3.0Kg ② Outer diameter of magnetic core ≤ 5mm: ≥ 2.0Kg |
| | 2.5 跌落 drop | 1m 高度自由落下水泥地，3 次 Free fall on the cement floor at a height of 1m, twice | 外观无明显损伤，产品电气性能符合要求 There is no obvious damage to the appearance, and the electrical performance of the product meets the requirements |
| | 2.6 耐焊接热 Resistance to welding heat | 焊锡温度：350℃±5℃ Solder temperature: 350 °C ± 5 °C 浸渍深度：10mm Immersion depth: 10mm | 外观无明显损伤， There is no obvious damage to the appearance, 10%≤ΔL/L≤10% |

| | | | |
|------|--|---|--|
| | | 浸渍时间: 3s±0.5s。 Immersion time: 3s ± 0.5s. | |
| 2.7 | 温度冲击 Temperature shock | 阶段 1: +105℃/30min Phase 1: +105 °C/30min 阶段 2: -25℃/30min Stage 2: - 25 °C/30min 转换时间<5min, 循环次数: 100 次 Conversion time < 5min, number of cycles: 100 恢复时间: 2 h Recovery time: 2 h | 外观无明显损伤, There is no obvious damage to the appearance, $10\% \leq \Delta L/L \leq 10\%$ |
| 2.8 | 工作寿命 working life | 温试验度: 85℃±2℃, 施加额定电流 Temperature test degree: 85 °C ± 2 °C, apply rated current 试验时间: 1000 h Test time: 1000 h 恢复时间: 24 h±2 h Recovery time: 24 h ± 2 h | |
| 2.9 | 耐高温 High temperature resistance | 温试验度: +125℃±2℃ Temperature test degree: +125 °C ± 2 °C 试验时间: 1000 h Test time: 1000 h 恢复时间: 24 h±2 h Recovery time: 2 h | |
| 2.10 | 耐低温 Low temperature resistance | 温试验度: -40℃±2℃ Temperature test degree: - 25 °C ± 2 °C 试验时间: 96 h Test time: 96 h 恢复时间: 2 h Recovery time: 2 h | |
| 2.11 | 振动 Vibration | 振动频率: 10Hz~55Hz 全振幅: 1.5mm 水平、垂直方向各 2h Vibration frequency: 10Hz~55Hz Full amplitude: 1.5mm 2h in horizontal and vertical directions respectively | |

◆包装方式&数量
Packaging Style Style&Quantity


| 代号 CodeI | P | E | P1 | P2 | d | Δh | W | W0 | W1 | C | H | H1 | D0 | I | F |
|-------------|------|------|------|------|-----|-----|-----|-----|-----|-----|-----|-----|-----|-----|-----|
| 尺寸 Dim. | 12.7 | 12.7 | 3.85 | 6.35 | 0.6 | 0 | 9 | 13 | 18 | 2.0 | 20 | 10 | 4.0 | 1.5 | 5.0 |
| 误差 Tol. | 1.0 | 0.3 | 0.7 | 0.4 | 0.1 | 1.0 | 1.0 | 1.0 | 1.0 | Max | 2.0 | 2.0 | 0.2 | Max | 0.5 |

* 包装数量单位

Packaging Quantity

单位: Unit: pcs

| 型号规格 | 包装方式 Packaging style | | |
|------|-------------------------|--------|------|
| | 吸塑盘包装 | 散包装 | 盒带包装 |
| 0406 | 140 | 500PCS | 2300 |
| 0507 | 140 | 500PCS | 2000 |
| 0608 | 140 | 500PCS | 1500 |
| 0810 | 110 | 200PCS | 700 |
| 0912 | 110 | 200PCS | 700 |
| 1010 | 104 | 200PCS | 500 |
| 1012 | 104 | 200PCS | 500 |
| 1215 | 112 | 100PCS | --- |
| 1415 | 80 | 100PCS | --- |

#可根据用户需求包装

Can be packaged according to user requirements

X-ON Electronics

Largest Supplier of Electrical and Electronic Components

Click to view similar products for [Fixed Inductors](#) category:

Click to view products by [Fenghua Advanced](#) manufacturer:

Other Similar products are found below :

[CR32NP-151KC](#) [CR32NP-180KC](#) [CR32NP-181KC](#) [CR32NP-1R5MC](#) [CR32NP-390KC](#) [CR32NP-3R9MC](#) [CR32NP-680KC](#) [CR32NP-820KC](#) [CR32NP-8R2MC](#) [CR43NP-390KC](#) [CR43NP-560KC](#) [CR43NP-680KC](#) [CR54NP-181KC](#) [CR54NP-470LC](#) [CR54NP-820KC](#) [CR54NP-8R5MC](#) [70F224AI](#) [MGDQ4-00004-P](#) [MHL1ECTTP18NJ](#) [MHQ1005P10NJ](#) [MHQ1005P1N0S](#) [MHQ1005P2N4S](#) [MHQ1005P3N6S](#) [MHQ1005P5N1S](#) [MHQ1005P8N2J](#) [PE-51506NL](#) [PE-53601NL](#) [PE-53602NL](#) [PE-53630NL](#) [PE-53824SNLT](#) [PE-92100NL](#) [PG0434.801NLT](#) [PG0936.113NLT](#) [9220-20](#) [9310-16](#) [PM06-2N7](#) [PM06-39NJ](#) [A01TK](#) [1206CS-471XJ](#) [HC2LP-R47-R](#) [HC2-R47-R](#) [HC3-2R2-R](#) [HCF1305-3R3-R](#) [1206CS-151XG](#) [RCH664NP-140L](#) [RCH664NP-4R7M](#) [RCH8011NP-221L](#) [RCP1317NP-332L](#) [RCP1317NP-391L](#) [RCR1010NP-470M](#)